



AS-46

Profile with removable back plate for easy mounting.
Dimension: 46*68*2500mm
Diffuser: PMMA Milky

Accessories

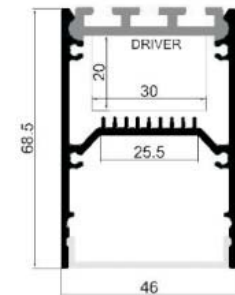
Endcap
Aluminum



Suspension kit
standard length 2m



LED strip
LIN-560-2200
15.3W | 132lm/w





AS-75

Extruded aluminum body with die cast endcaps, high light transmittance PC diffuser creating smooth and uniform lighting distribution.
 Dimension: 75*75*2500mm
 Diffuser: PC Milky

Accessories

Endcap
Aluminum



Mounting clip



Suspension kit
standard length 2m

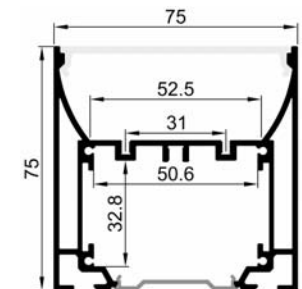


Canopy



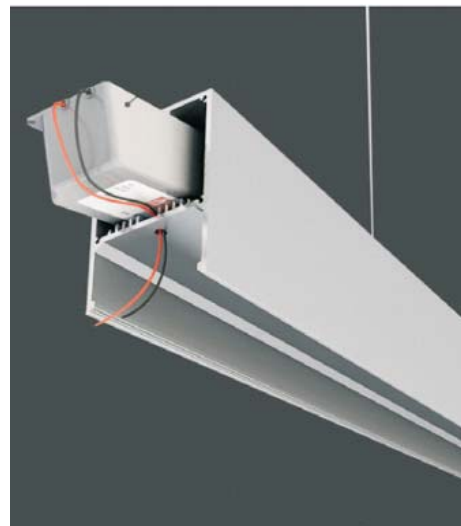
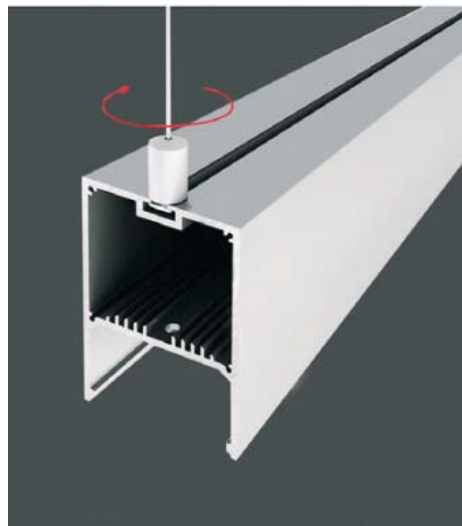
LED strip

LIN-560-2200
15.3W | 132lm/w





Installation



Installation





DS5090

Extruded aluminum body with Direct & Indirect light distribution.
Dimension: 50*90*2500mm
Diffuser: PC Milky

Accessories

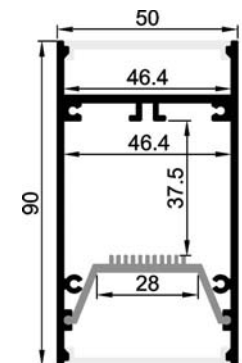
Endcap
Aluminum



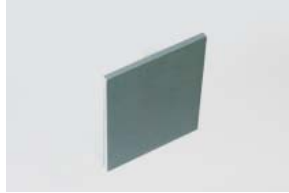
Suspension kit
standard length 2m



LED strip
LIN-560-2200
15.3W | 132lm/w



Accessories



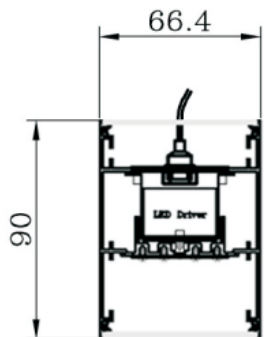
Endcap
Aluminum
screwless



Suspension kit
standard length 2m



LED strip
LIN-560-2200
15.3W | 132lm/w



DS6890

Extruded aluminum body with Direct& Indirect light distribution.
Dimension: 68*90*2500mm
Diffuser: PC Milky



Accessories



Endcap



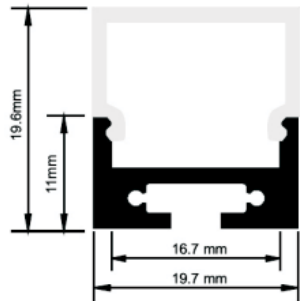
Mounting clip



Suspension kit
standard length 2m



LED strip
Linear 140
140 led | 14 W | 1540lm



AS1911

Compact profile with square diffuser makes it perfect for surface and suspended installation.
Dimension: 19*11*2500mm
Diffuser: PC Milky



AS1911R

Compact profile with dome diffuser makes it perfect for surface and suspended installation.
Dimension: 19*11*2500mm
Diffuser: PC Milky

Accessories

Endcap



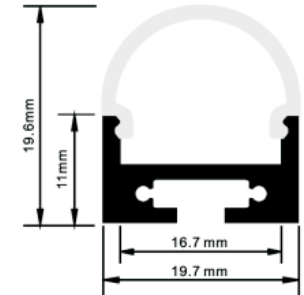
Mounting clip



Suspension kit
standard length 2m



LED strip
Linear 140
140 led | 14 W | 1540lm



Accessories



Endcap



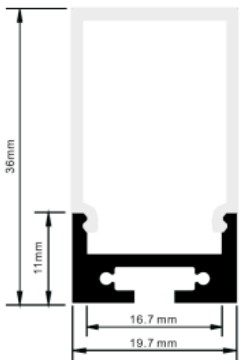
Mounting clip



Suspension kit
standard length 2m



LED strip
Linear 140
140 led | 14 W | 1540lm

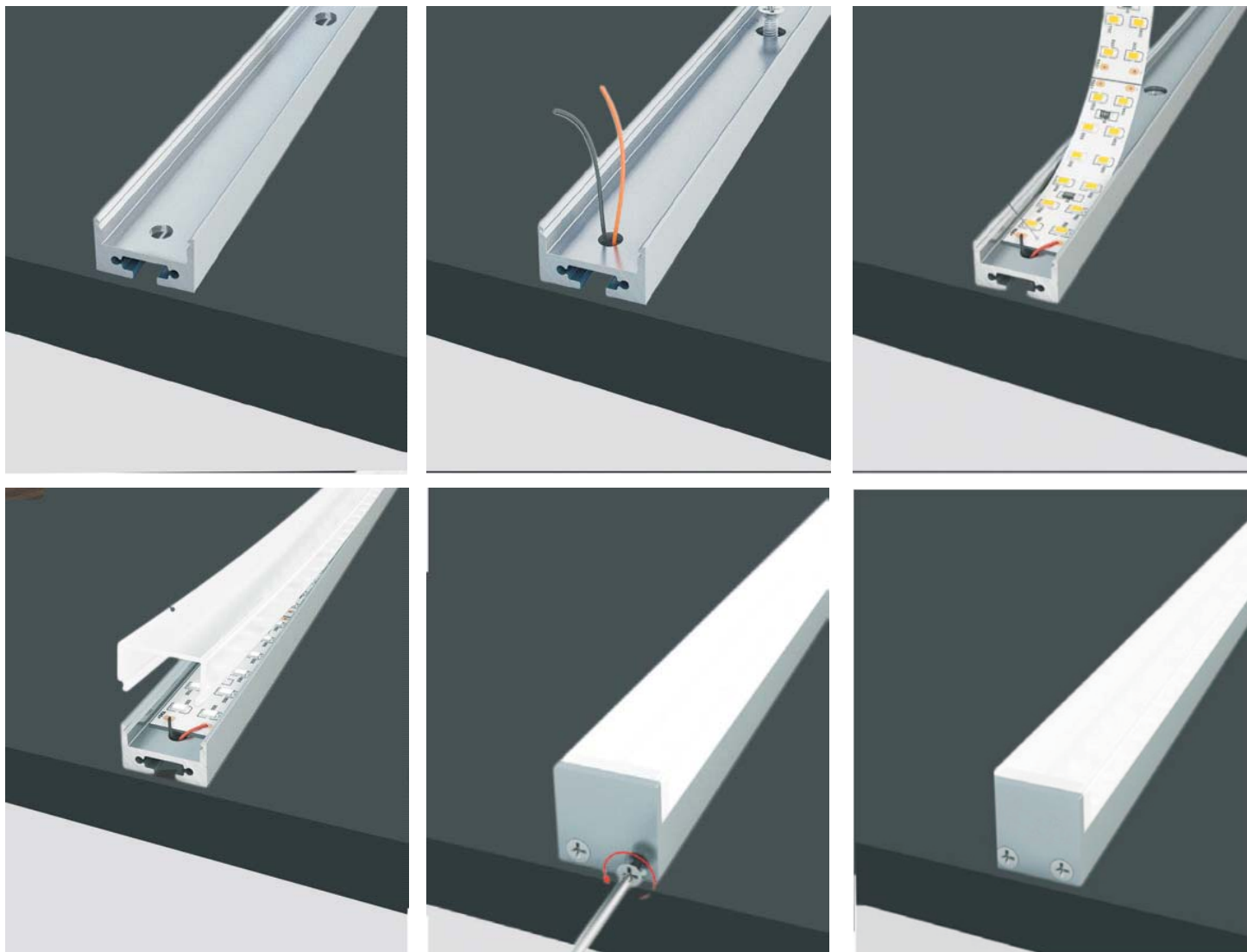


AS1911P

Compact profile with rectangle diffuser allows more light to emit through the sides.
Dimension: 19*11*2500mm
Diffuser: PC Milky



Installation





AS-Round

Round shape profile with round diffuser designed for suspended or wall mount installation.

Dimension: Dia20.8*2500mm

Diffuser:

PMMA Opal matt/ Frosted/ Transparent

Accessories

Endcap

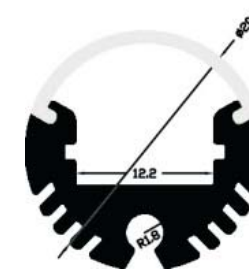


Suspension kit
standard length 2m



LED strip

Linear 140
140 led | 14 W | 1540lm



Accessories



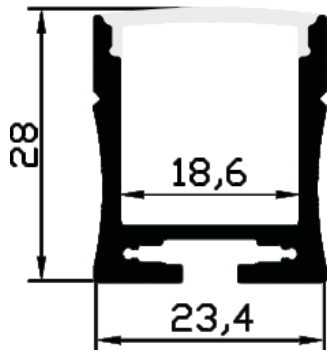
Endcap
Aluminum



Suspension kit
standard length 2m



LED strip
Linear 140
140 led | 14 W | 1540lm



AS2328

Architectural design profile dedicated
for wide LED stripes up to 18mm wideness.
Dimension: 23*28*2500mm
Diffuser:
PMMA Opal matt/ Frosted/ Transparent

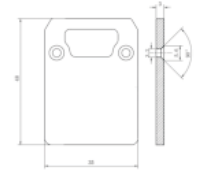


AS3532

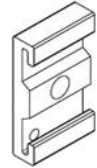
Extrude aluminum provides excellent heat dissipation for high power LEDs.
 Dimension: 35*32*2500mm
 Diffuser:
 PC Milky/ Transparent

Accessories

Endcap
 Aluminum



Mounting clip

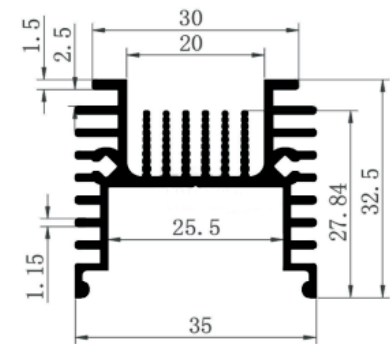


Suspension kit
 standard length 2m



LED strip

Linear 140
 140 led | 14 W | 1540lm







Wall mount

This aluminum profile has been designed to instal into wall with several possible directions light output.

The profile can be used inside or outside with connection of IP67 LEDs inside.

It comes with choices of three UV resistant PMMA diffusers:

Opal matt, Frosted and Transparent. Fixed with mounting clips for easy installation.

Continuous length at 2.5m, other customized lengths on request.

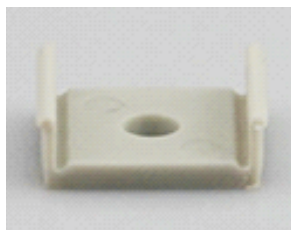
Available Finishes



Accessories



Endcap

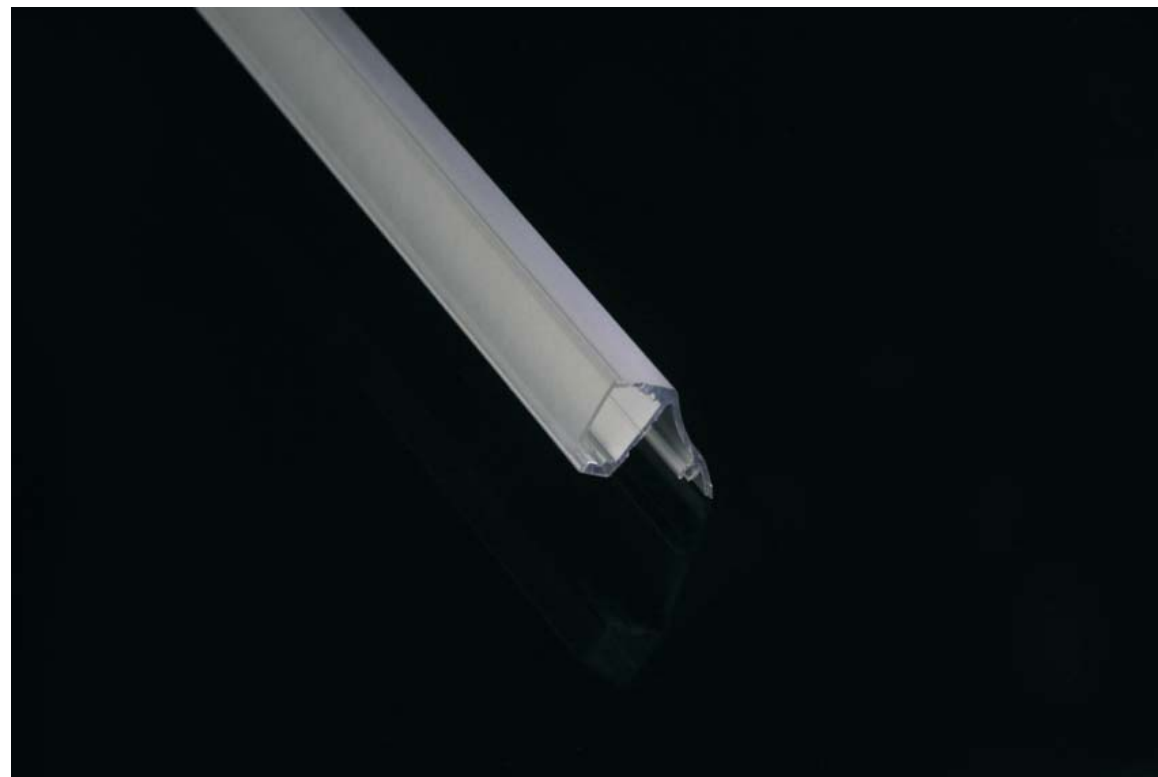
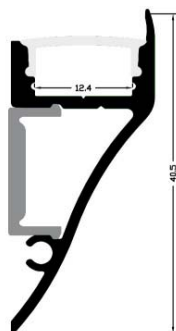


Mounting clip



LED strip

Linear 140
140 led | 14 W | 1540lm



WA001

Wall mount profile with up direction light output.
Dimension: 18*40*2500mm
Diffuser:
PMMA Opal matt/ Frosted/ Transparent



WA002

Wall mount profile with up direction light output.
Dimension: 30*18*2500mm
Diffuser:
PMMA Opal matt/ Frosted/ Transparent

Accessories

Endcap

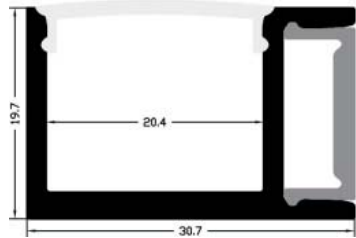


Mounting clip

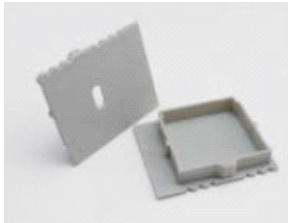


LED strip

Linear 140
140 led | 14 W | 1540lm



Accessories

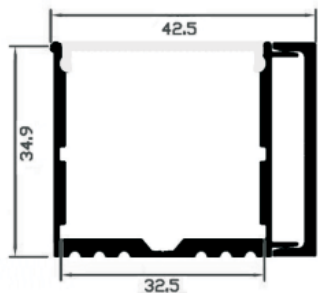


Endcap



LED strip

Powerline 196
196 led | 21 W | 2520lm



Wall mount profile with sliding plate.
Dimension: 35*35*2500mm
Diffuser:
PMMA Opal matt/ Frosted/ Transparent



WA003



WA004

Wall mount profile with three directions light output.

Dimension: 18*41*2500mm

Diffuser:

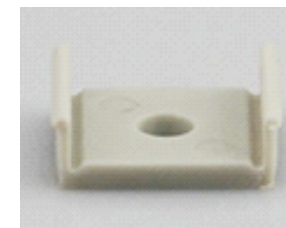
PMMA Opal matt/ Frosted/ Transparent

Accessories

Endcap

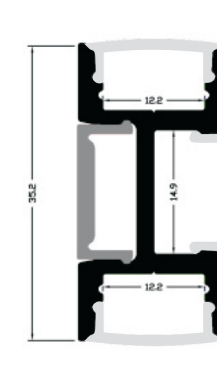


Mounting clip



LED strip

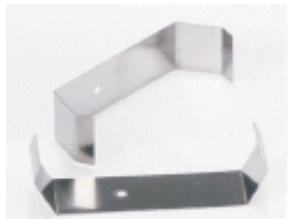
Linear 140
140 led | 14 W | 1540lm



Accessories



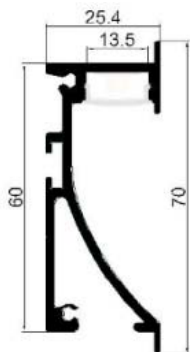
Endcap
aluminum



Mounting clip



LED strip
Linear 140
140 led | 14 W | 1540lm



WA005

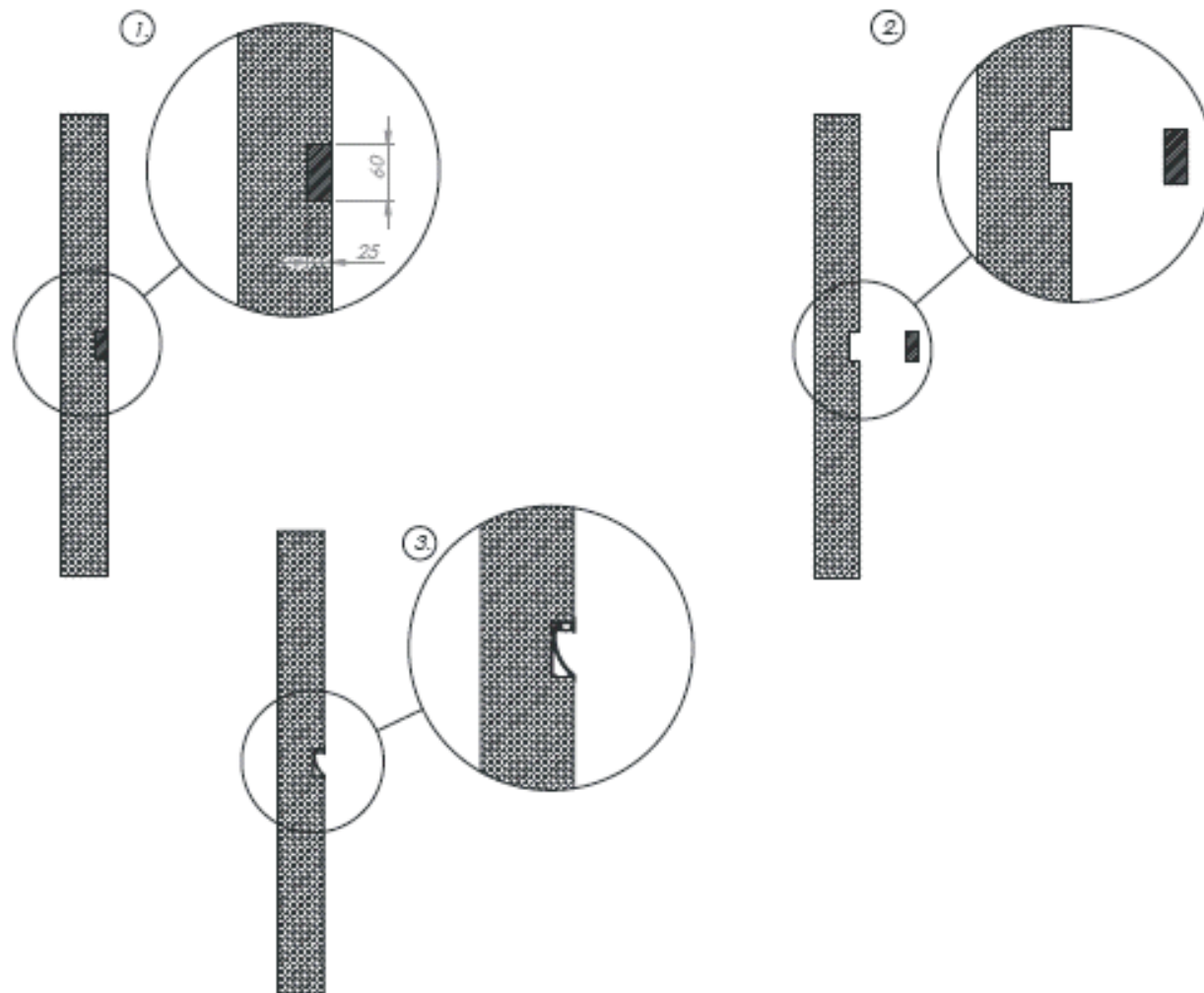
The profile is for build-in into the wood structure walls and direct the LED light to the floor.

Dimension: 25*70*2500mm

Diffuser:

PMMA Opal matt/ Frosted/ Transparent

Installation



Accessories



Endcap
aluminum



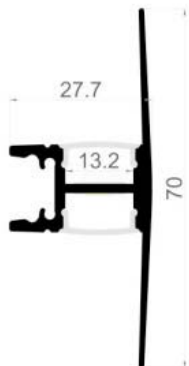
Mounting clip



LED strip
Linear 140
140 led | 14 W | 1540lm



WA006



Wall mount profile with up and down directions light output.
Dimension: 28*70*2500mm
Diffuser:
PMMA Opal matt/ Frosted/ Transparent

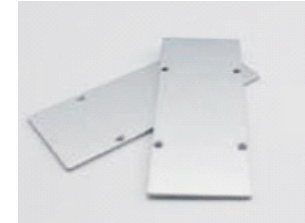


WA3385

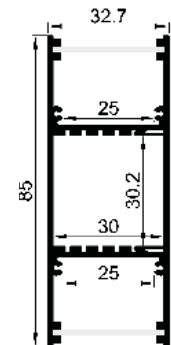
Wall mount profile with up and down directions light output.
Dimension: 33*85*2500mm
Diffuser:
PC milky

Accessories

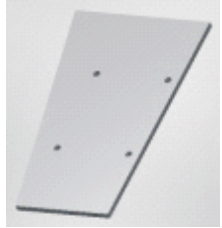
Endcap
aluminum



LED strip
Powerline 196
196 led | 21 W | 2520lm



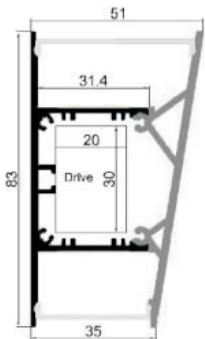
Accessories



Endcap
aluminum



LED strip
Powerline 196
196 led | 21 W | 2520lm



WA3583

Wall mount profile with up and down directions light output.
Dimension: 35*83*2500mm
Diffuser:
PMMA milky



Installation



Stair profile

The Stair profile is designed for mounting on the edges of stairs, platforms, etc.

It is designed for step illumination and warning light.

The anti-slip rubber on the upper side works as the cover for LED strip.

Endcaps are fitted on place for easy installation.

Continuous length at 2.5m, other customized lengths on request.

Available Finishes

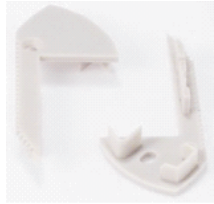
Silver

White

Black



Accessories

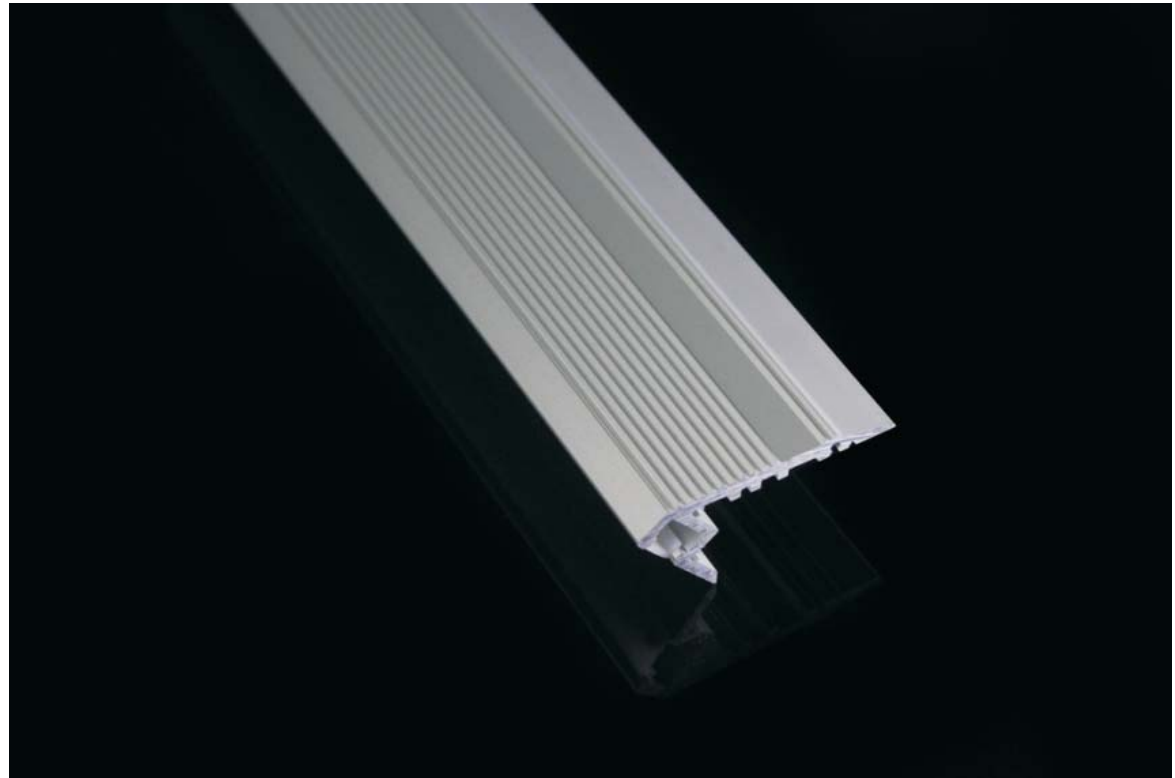


Endcap

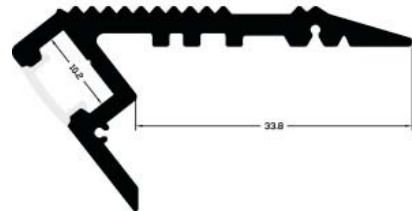


LED strip

Linear 140
140 led | 14 W | 1540lm



ST001



It's designed for steps illumination in darker room, walk over safety and time ware out resistant.

Dimension: 34*10*2500mm

Diffuser:
PC Milky



ST002

It is designed for step illumination and warning light.
The anti-slip rubber on the upper side works as the cover for LED strip.
Dimension: 81*34*2500mm
Diffuser:
PC Opal/ Frosted/ Transparent

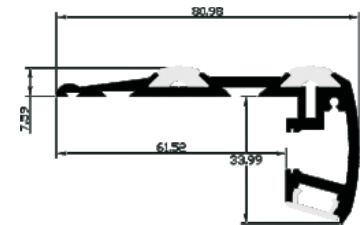
Accessories

Endcap



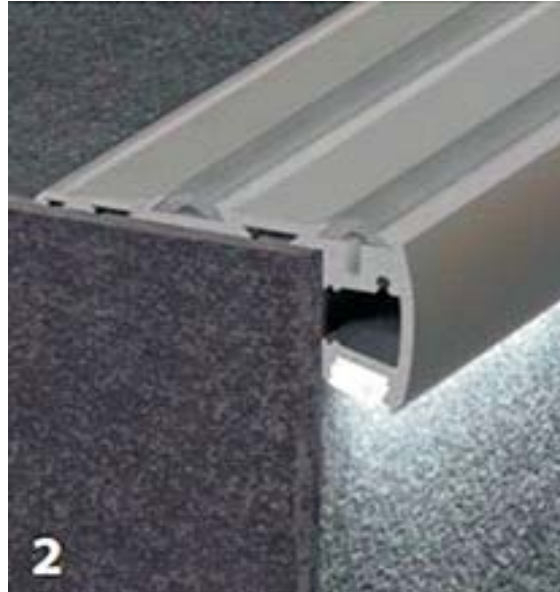
LED strip

Linear 140
140 led | 14 W | 1540lm





warning light



step illumination lights



light at same time



Floor profile

The profile is designed for mounting in the floor. The diffuser is made of polycarbonate, 3mm thickness and damage resistant allows you to walk over the profile. The extrusion, together with LEDs, cover and caps should be used only in a version specially sealed with neutral silicone. Continuous length at 2.5m, other customized lengths on request.



Available Finishes



Accessories

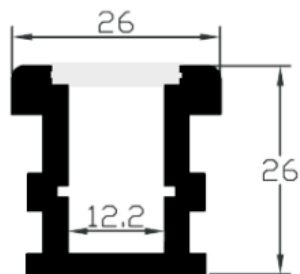


Endcap



LED strip

Linear 140
140 led | 14 W | 1540lm



The profile should be used only in a version specially sealed with neutral silicone.
Dimension: 26*26*2500mm
Diffuser:
3mm thickness PC milky



FL001



FL002

Small profile should be used only in a version specially sealed with neutral silicone.

Dimension: 20*8*2500mm

Diffuser:

3mm thickness PC milky

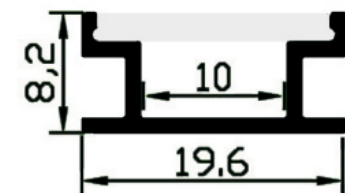
Accessories

Endcap



LED strip

Linear 140
140 led | 14 W | 1540lm



Accessories



Endcap

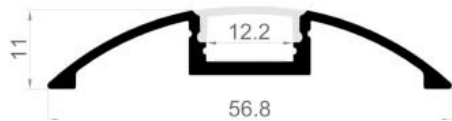


LED strip

Linear 140
140 led | 14 W | 1540lm



FL003



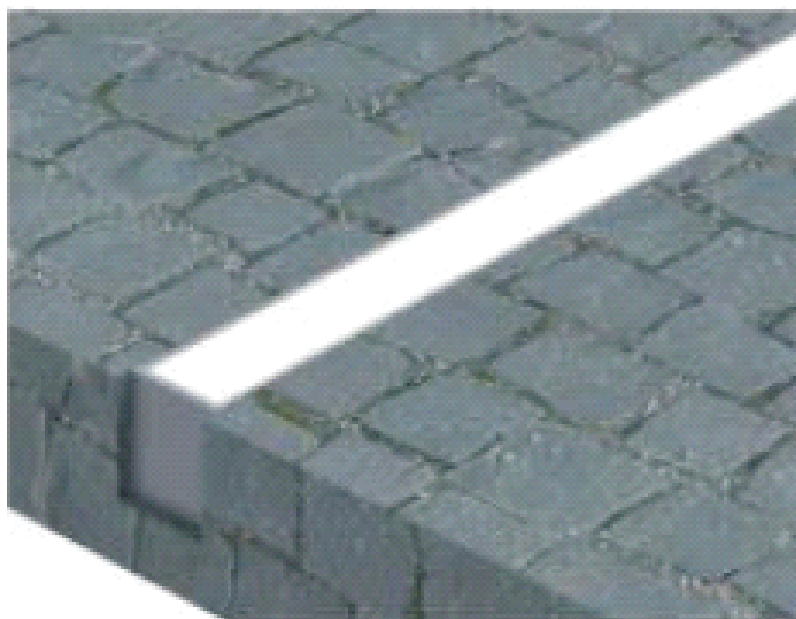
The aluminum profile thickness and damage resistant diffuser allow you to walk over safe.

Dimension: 57*11*2500mm

Diffuser:

PC Opal/ Frosted/ Transparent

Installation



Decorative Profile

The profile is used for decorative lighting. It's widely used in many applications: The wardrobe profile is used in furniture lighting, One-piece PMMA profile is widely used in linear lighting, lighting and furniture lighting, ect. Continuous length at 2.5m, other customized lengths on request.

Available Finishes

Silver

White

Black





WR001

The wardrobe profile is used as closet lighting.
Dimension: 9*30*2500mm
Diffuser:
PMMA Milky

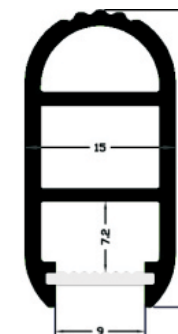
Accessories

Endcap



LED strip

Linear 140S
140 led | 10 W | 1150lm



Accessories



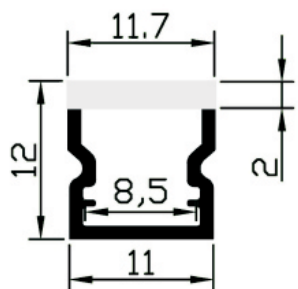
Endcap



Mounting clip



LED strip
Rigid slim strip



One piece PMMA profile
special diffuser allows to get a single line
of light with LED dots
not visible



PA001

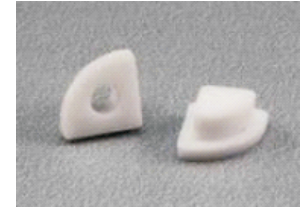


PA002

One piece PMMA profile
It elegantly fits in any corner application

Accessories

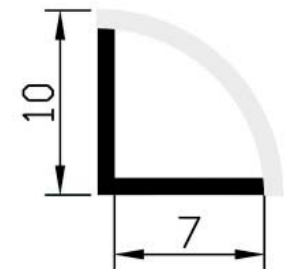
Endcap



Mounting clip



LED strip
Rigid slim strip





Glass Profile

The profile is dedicated for illuminating the edge of glass or other material, 6mm-8mm thickness.

The end caps are supposed to protect the extrusion against dust and undesirable particles that may cause contamination of the LED strip. It's used to illuminate signboards, information signs, exhibitions stands, etc.

Continuous length at 2.5m, other customized lengths on request.



Available Finishes



Accessories

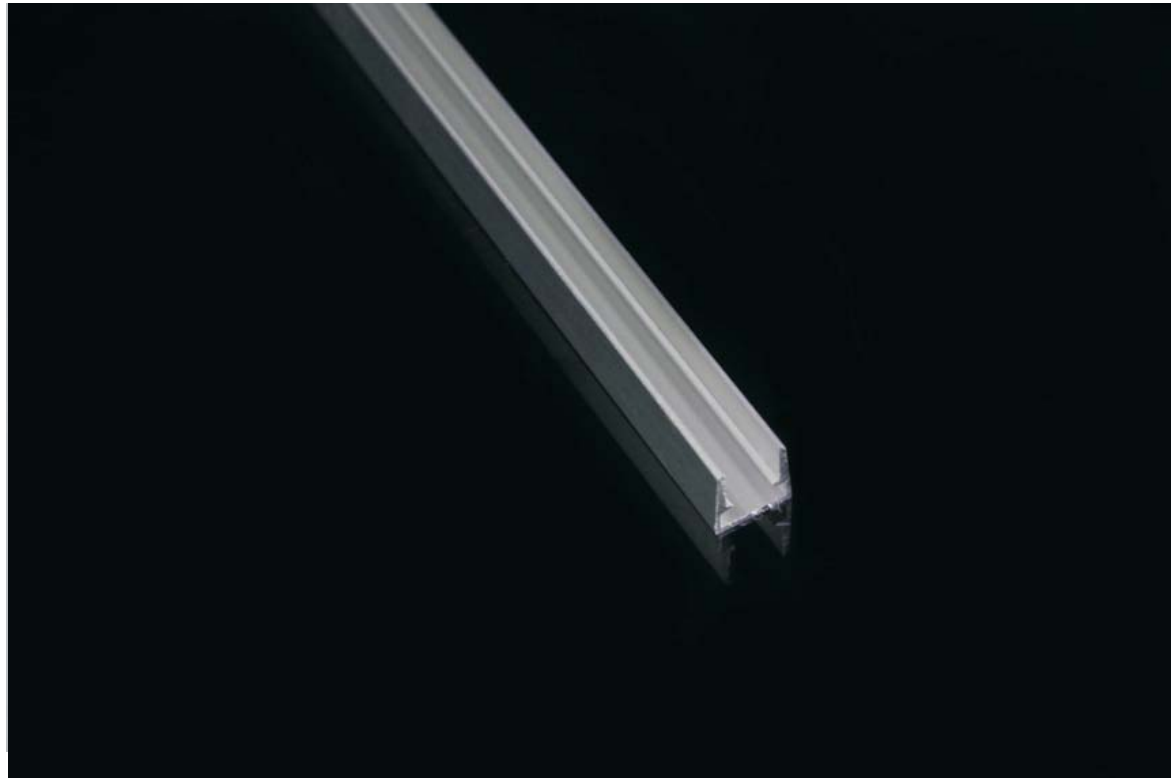
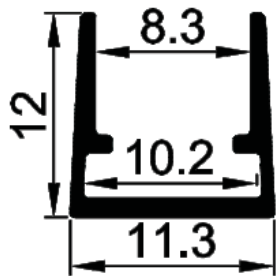


Endcap



LED strip

Linear 140
140 led | 14 W | 1540lm



GS001

The Slim profile is dedicated for illuminating
the edge of glass of 8mm-thick
Without diffuser



GS002

The profile is dedicated for illuminating the edge of glass of 8mm-thick.

Diffuser:
PC Opal/ Frosted/ Transparent

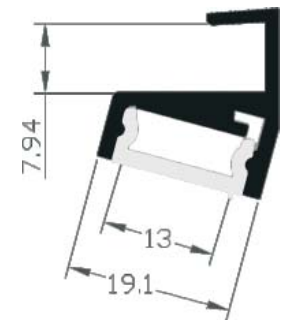
Accessories

Endcap



LED strip

Linear 140
140 led | 14 W | 1540lm



Accessories

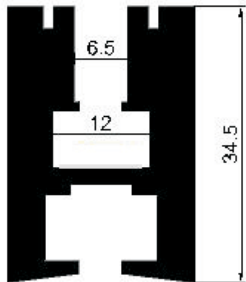


Endcap

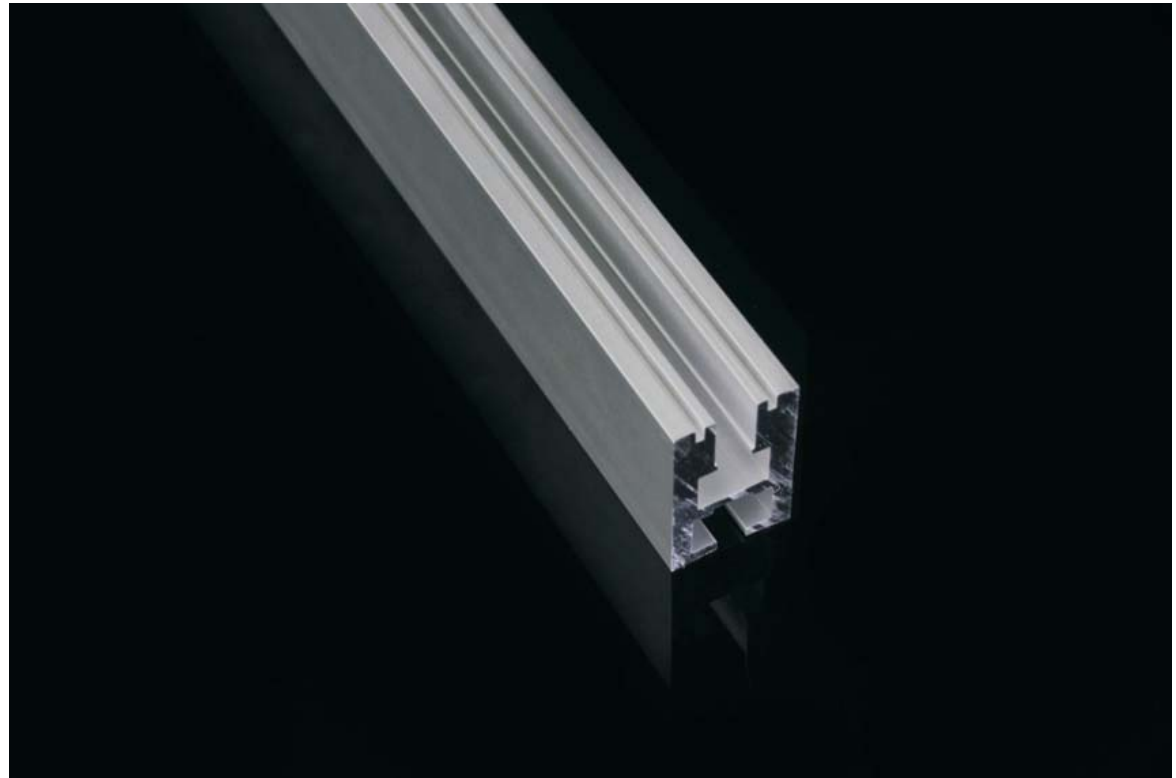


LED strip

Linear 140S
140 led | 10 W | 1150lm

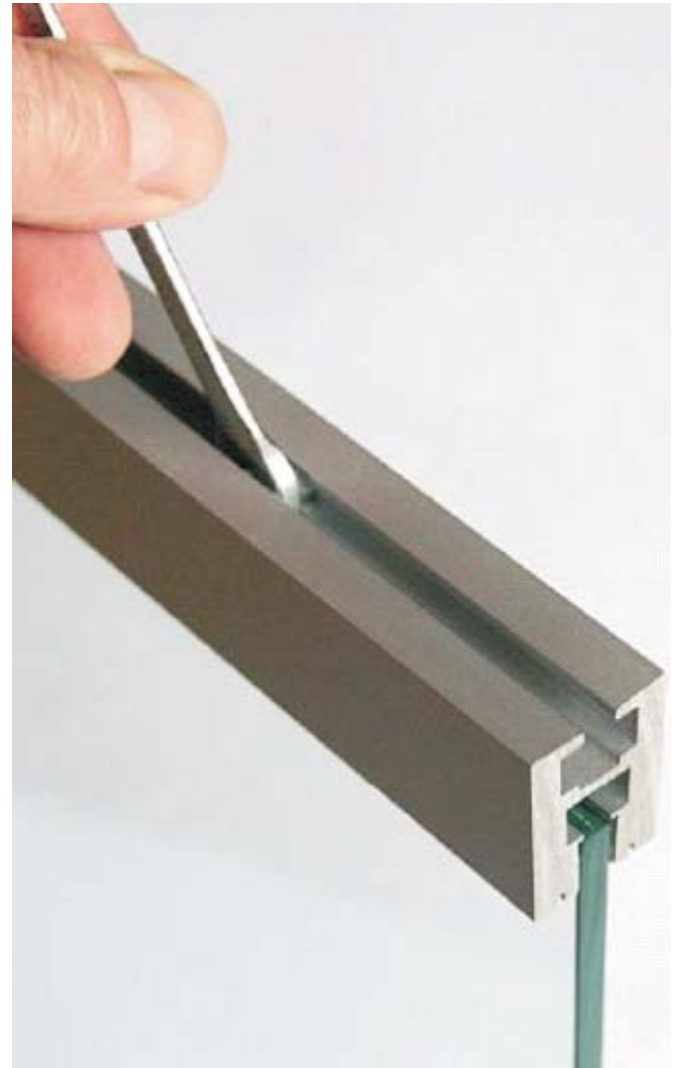
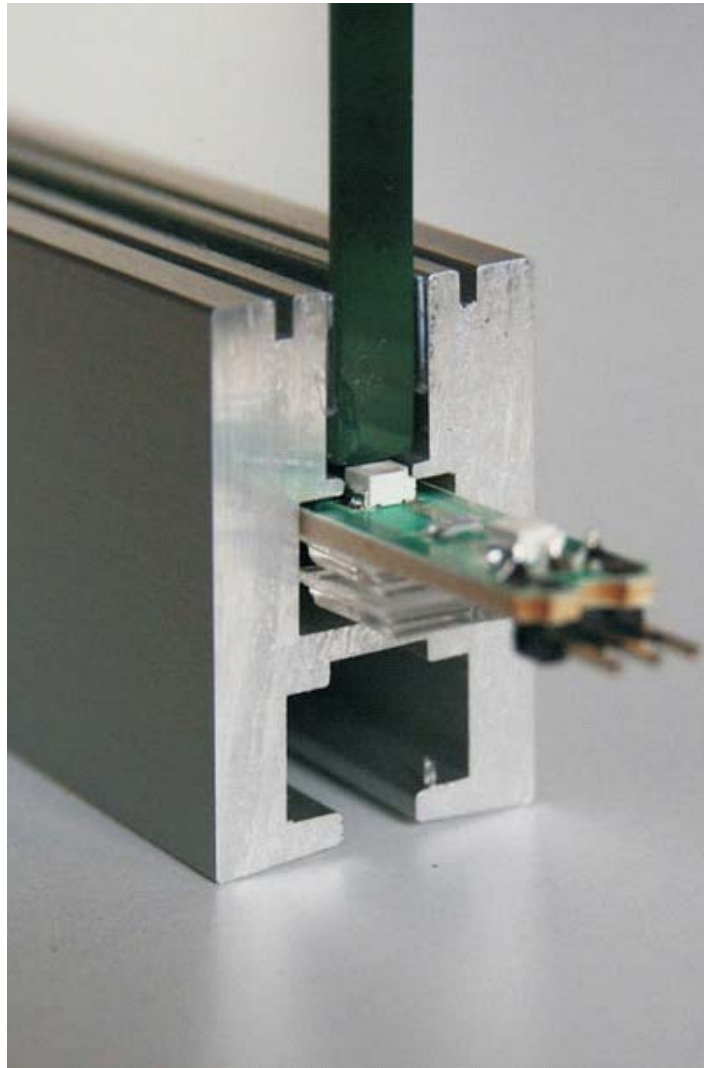


LW-GP1



GS003

The profile is dedicated for
edge lighting of 6mm-thick glass panes.
Without diffuser



LED Flexible Strip



SMD2835

Lower power, higher lumen output, tightly spaced.
Particularly suited to applications requiring homogenous diffusion or LED "dots" free in tight installation environment.

LED Flexible Strip

Model	LED Qty	Voltage	Power	Lumen/m	CRI	Dimension	Min. cut
Linear 60	60	12/24V	12W	1150lm	>80	5000*10*2mm	50mm/100mm
Linear 120	120	12/24V	14W	1250lm	>80	5000*10*2mm	25mm/50mm
Linear 140	140	24V	14W	1540lm	>80	2500*10*2mm	50mm
Linear 140S	140	24V	10W	1150lm	>80	2500*6*2mm	50mm
Linear 182	182	24V	15W	1800lm	>80	2500*10*2mm	38.46mm
Powerline 196	196	24V	21W	2520lm	>80	5000*15*2mm	71.43mm

Color temperature:
Warm white: 2700-3000k
Natural white: 4000-4500k
Cold white: 5500-6500K

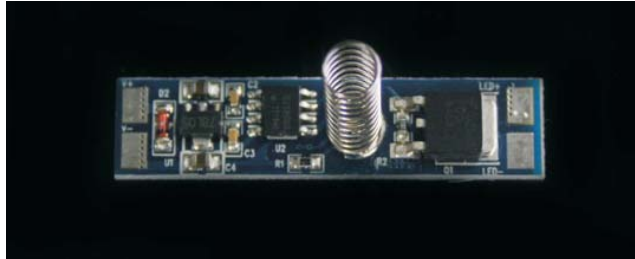


PrevaLED Linear Value series offers innovative solutions for a variety of general lighting applications. Providing seamless longlife, energy-efficient, and economical lighting alternative to linear fluorescent lamp sources.

Model	Power	Lumen	If (mA)	lm/W
LIN-1300-560	9.1W	1220lm	250mA	132lm/w
LIN-2200-560	15.3W	2032lm	500mA	132lm/w

Color temperature:
Warm white : 3000k
Natural white: 4000k
Cold white: 5000K

Sensor Switch for LED Profile



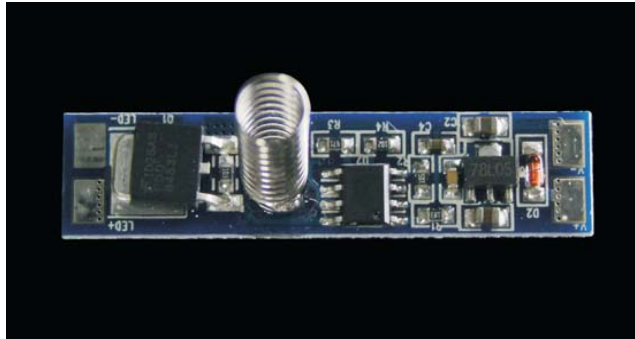
SW-001

Switch on/off dimmer

43mm*10mm

12VDC- 24VDC

Max Current 10



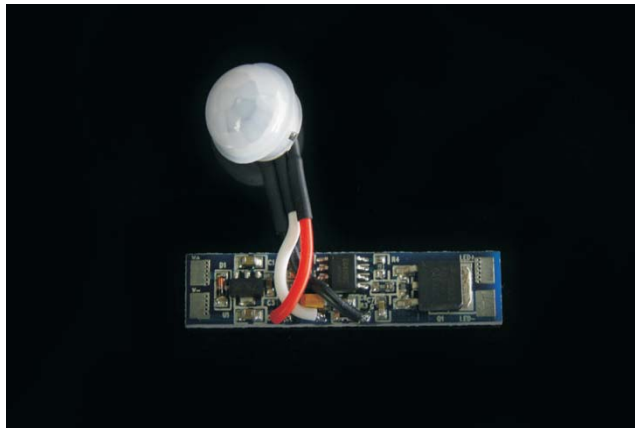
SW-002

4-Step Touch Dimmer

40mm*10mm.

12VDC- 24VDC

Max Current 10A



PIR-001

PIR Sensor switch

43mm*10mm

12VDC- 24VDC

Max Current 10A.

Detection Range \leq 2meters

Delay Time: 40 seconds

Sensor Switch for LED Profile



PIR-002

PIR Sensor switch

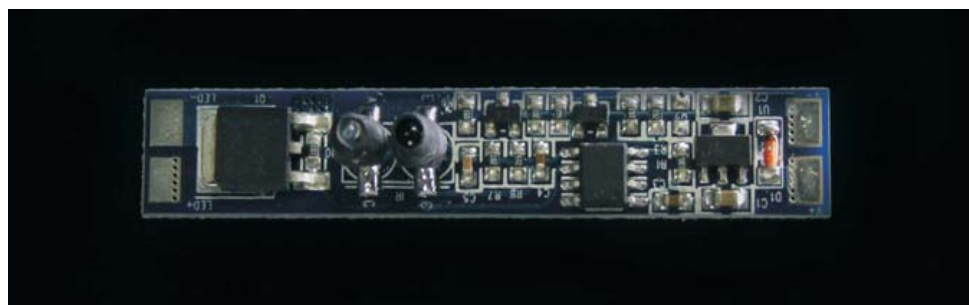
43mm*10mm

12VDC- 24VDC

Max Current 10A.

Detection Range \leq 2meters

Delay Time: 40 seconds



IR-001

IR Hand Sensor Switch

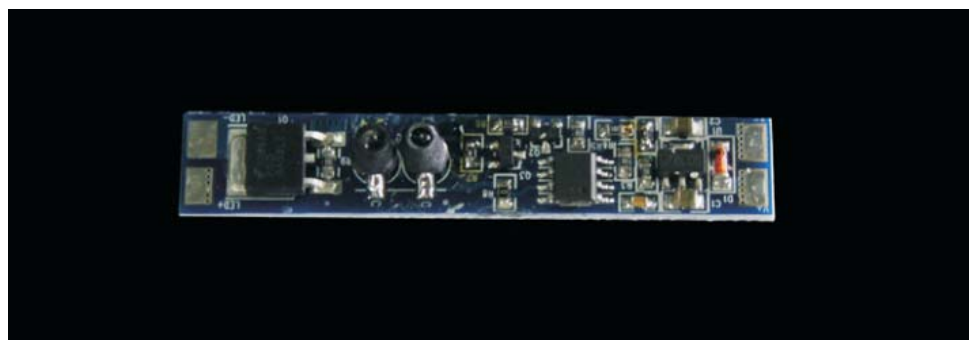
55mm*10mm.

12VDC- 24VDC

Max Current 6A.

Detection Distance \leq 10CM

Light turns on/off when moving hands



IR-002

IR Door Sensor Switch

55mm* 10mm.

12VDC- 24VDC

Max Current 6A.

Detection Distance \leq 10CM

light turns on/off when open/close the door





Bellaluce Lighting Pty Ltd

128 Carrington St, Revesby 2212, Australia

P| 0430048322

E| sunny@bellalucelighting.com.au

W| www.bellalucelighting.com.au