



ALUMINUM LED PROFILE

The aluminum extrusion LED profile offers you several possible configurations with LED strips in different color temperatures and different diffusers.

It is performing as heat sink to the LEDs and also providing physical protection.

Our aluminum product line is ideal for cabinets, shelves, joineries, coves and direct replacement for T5 fluorescent.

Enjoy your extrusion!

Bellaluce Lighting Pty Ltd

128 Carrington St, Revesby 2212, Australia

P| 0430048322

E|sunny@bellalucelighting.com.au

W| www.bellalucelighting.com.au

Content

• Surface mount	-----	P1-15
• Recessed profile	-----	P16-29
• Corner profile	-----	P31-37
• Suspended	-----	P38-66
• Wall mount	-----	P67-76
• Stair profile	-----	P77-80
• Floor profile	-----	P81-85
• PMMA profile		P86-91
• LED Strip	-----	P92-94
• Sensor switch	-----	P95-97

Surface mount



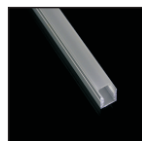
P2 SM1707



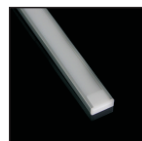
P3 SM1715



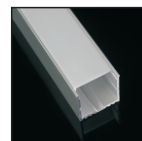
P4 SM2310



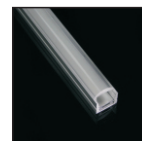
P5 SM1013



P6 SM1506



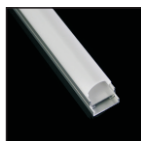
P7 SM3535



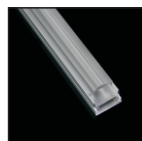
P10 SM-Lens1



P12 SM1919



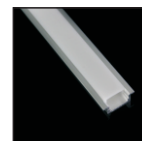
P13 SM1919R



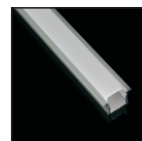
P14 SM1919P



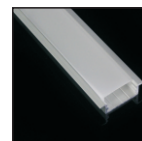
Recessed profile



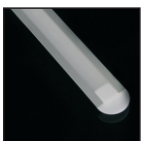
P17 RC1707



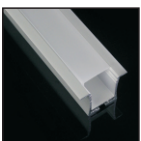
P18 RC1715



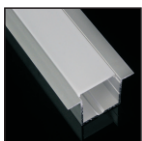
P19 RC2310



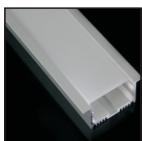
P20 RC1506



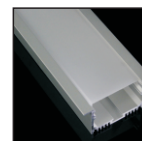
P23 RC2328



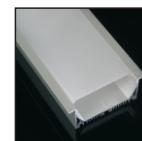
P24 RC3535



P25 RC5032



P26 RC7532



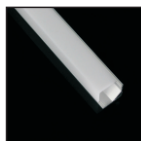
P27 RC7535



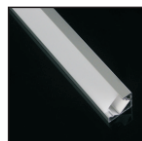
Suspended



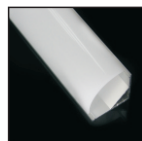
P31 CR1616



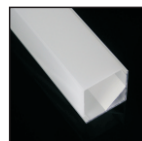
P32 CS1616



P33 CR1818



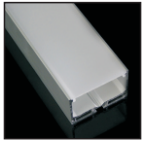
P34 CR3030



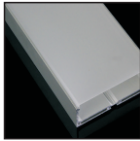
P35 CS3030



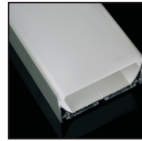
P39 AS3535



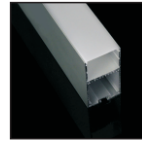
P40 AS5032



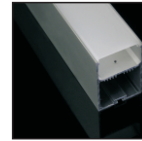
P41 AS7532



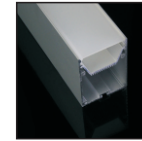
P42 AS7535



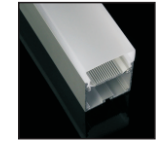
P44 AS3567



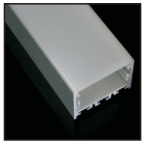
P45 AS4970



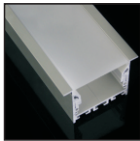
P46 AS5575



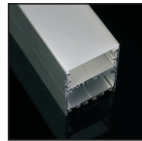
P47 AS5575D



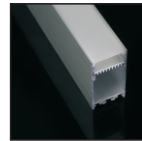
P48 AS50



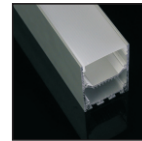
P49 AS-R50



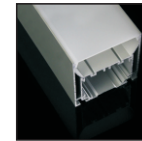
P50 AS-S50



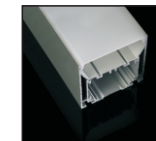
P51 AS-35



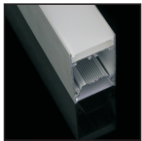
P52 AS-46



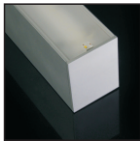
P53 AS-75



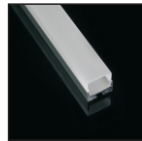
P54 AS-100



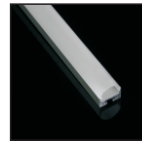
P57 DS5090



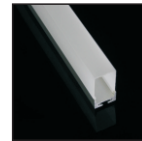
P58 DS6890



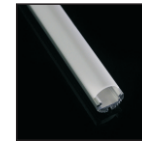
P60 AS1911



P61 AS1911R



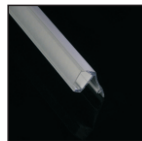
P62 AS1911P



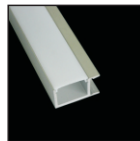
P65 AS-Round



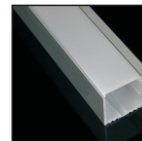
P66 AS-Round 60



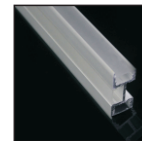
P68 WA001



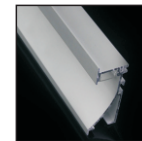
P69 WA002



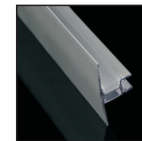
P70 WA003



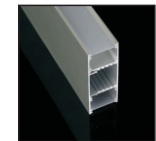
P71 WA004



P72 WA005

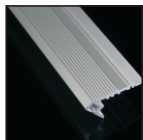


P74 WA006

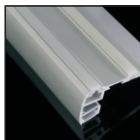


P75 WA3385

Stair profile



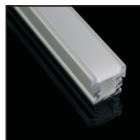
P78 ST001



P79 ST002



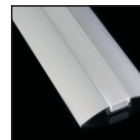
Floor profile



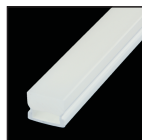
P82 FL001



P83 FL002



P84 FL003



P87 PA003



P88 PA003AL



P89 PA004



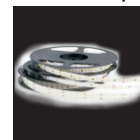
P90 PA004-B



P91 PA005



LED Strip



P92

Sensor switch



P95

Surface mount

Our surface mount aluminum profiles are made of high quality anodized aluminium.

They have been designed to mount directly on flat surface.

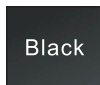
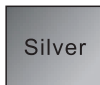
The profile is coming with choices of three UV resistant PMMA diffusers:

Opal matt, Frosted and Transparent.

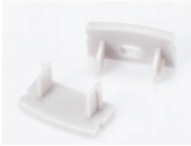
Fixed with mounting clips for easy installation.

Continuous length at 2.5m, other customized lengths on request.

Available Finishes



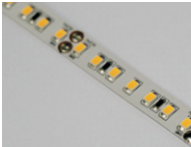
Accessories:



Endcap



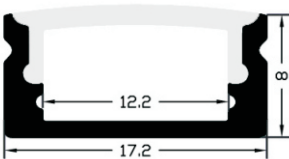
Mounting clip



LED strip
Linear 140
140 led | 14 W | 1540lm



SM1707



Surface mount aluminum profile with height of 7mm only.
Dimension: 17*7*2500mm
Diffuser:
PMMA Opal matt/ Frosted/ Transparent



SM1715

Surface mount aluminum profile with height of 15mm only.
Dimension: 17*15*2500mm
Diffuser:
PMMA Opal matt/ Frosted/ Transparent

Accessories:

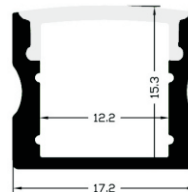
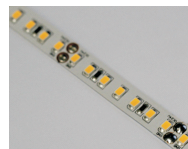
Endcap



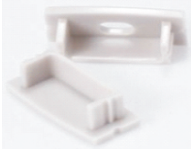
Mounting clip



LED strip
Linear 140
140 led | 14 W | 1540lm



Accessories:



Endcap



Mounting clip



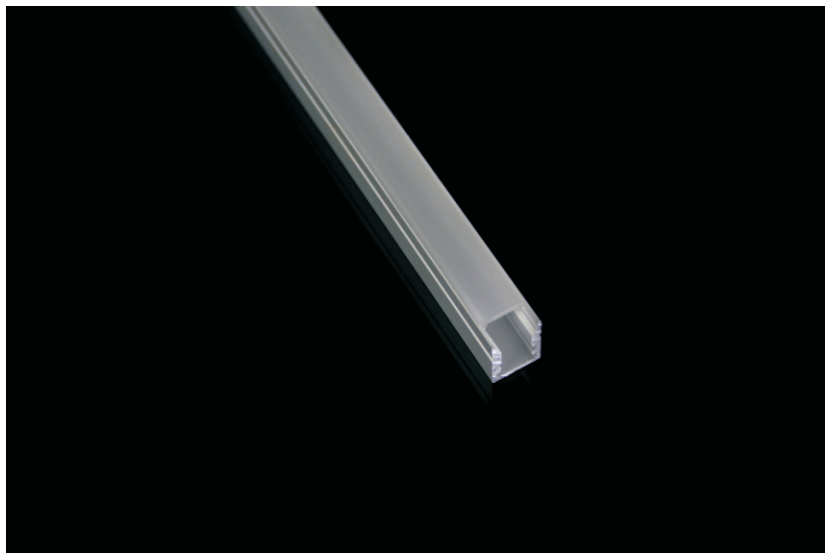
LED strip
Linear 140
140 led | 14 W | 1540lm



SM2310



Surface mount aluminum profile with larger space.
Dimension: 23*10*2500mm
Diffuser:
PMMA Opal matt/ Frosted/ Transparent



SM1013

Super slim aluminum profile is great for any display.

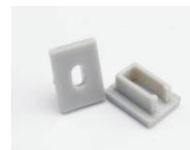
Dimension: 10*13*2500mm

Diffuser:

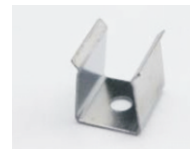
PC Milky

Accessories:

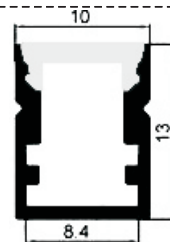
Endcap



Mounting clip



LED strip
Linear 140S
140 led | 10 W | 1150lm



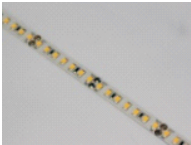
Accessories:



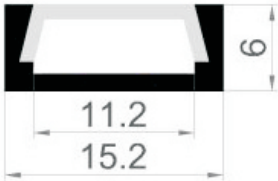
Endcap



Mounting clip

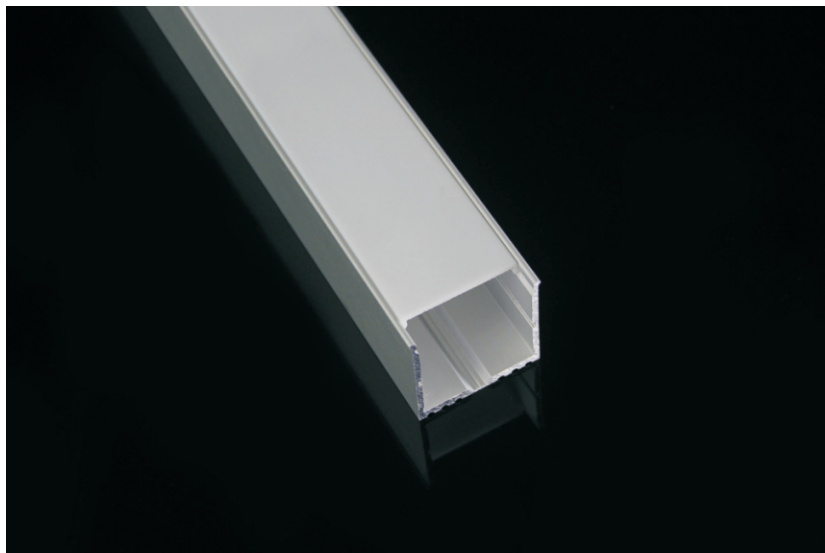


LED strip
Linear 140
140 led | 14 W | 1656lm



SM1506

Slim surface mount aluminum profile with height of 6mm only.
Dimension: 15*6*2500mm
Diffuser:
PC milky/ Transparent



SM3535

Surface mount aluminum profile with larger space for double row strip.

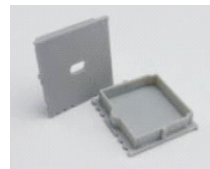
Profile size: 35*35*2500mm

Diffuser:

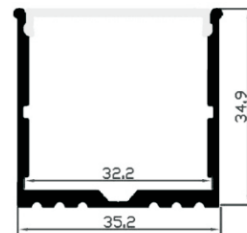
PMMA Opal matt/ Frosted/ Transparent

Accessories:

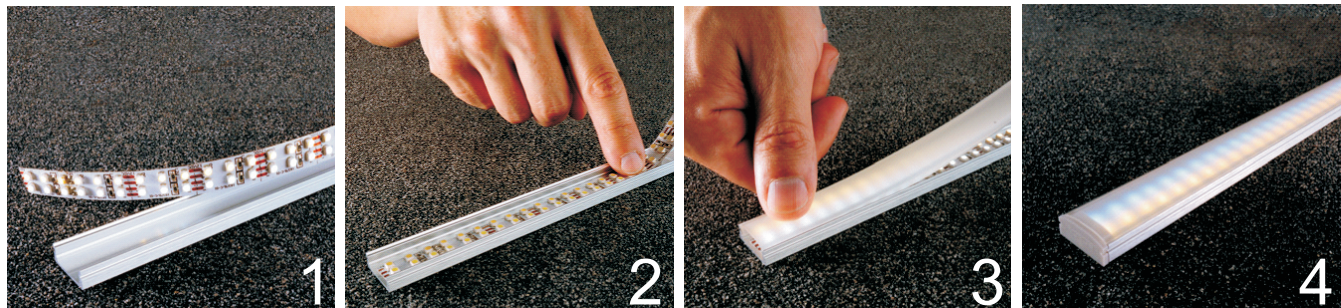
Endcap



LED strip
Powerline 196
196 led | 21 W | 2520lm







Accessories:



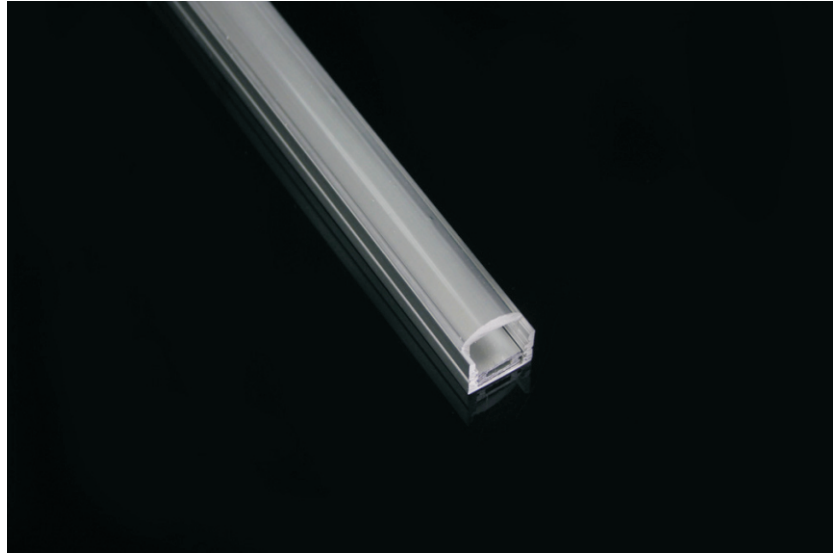
Endcap



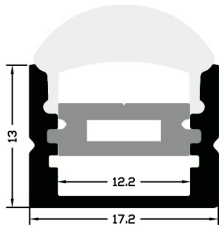
Mounting clip



LED strip
Linear 140
140 led | 14 W | 1540lm

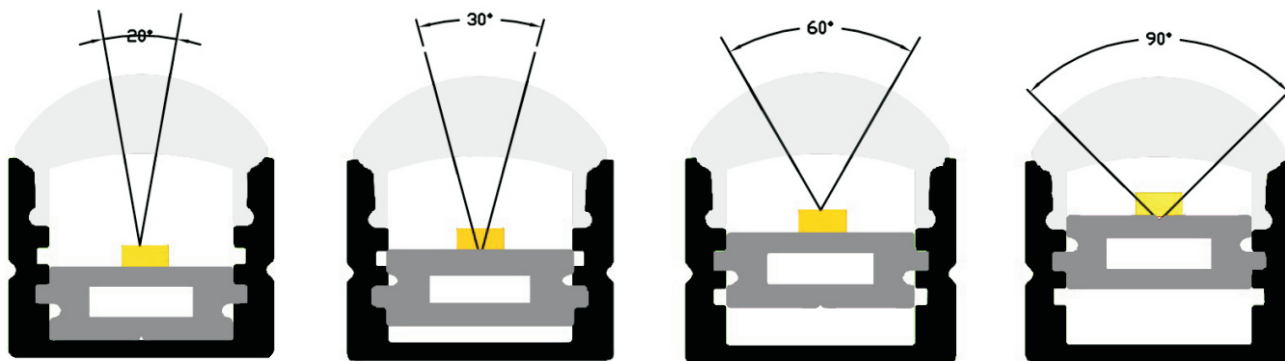


SM-Lens1



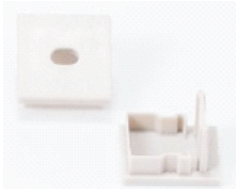
Surface mount aluminum profile with optic lens.
Profile size: 17*15*2500mm
Diffuser:
PMMA Transparent

Different beam angles



Adjust the aluminum bar to get different beam angles

Accessories



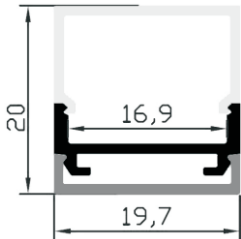
Endcap



LED strip
Linear 140
140 led | 14 W | 1540lm



SM1919



discreet profile with square diffuser make it perfect for a variety of surface installations.

Profile size: 19*19*2500mm

Diffuser:

PMMA Opal matt/ Frosted/ Transparent



SM1919R

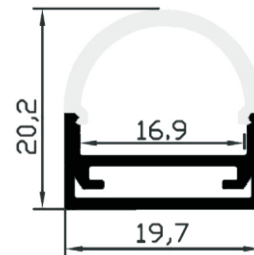
Constructed with dome shape diffuser for a nice stylistic feature.
Profile size: 19*19*2500mm
Diffuser:
PMMA Opal matt/ Frosted/ Transparent

Accessories

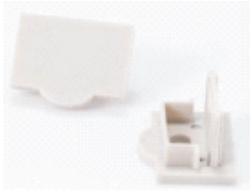
Endcap



LED strip
Linear 140
140 led | 14 W | 1540lm



Accessories



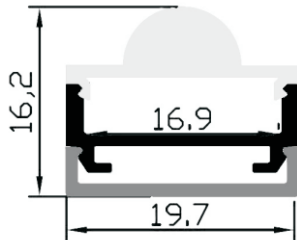
Endcap



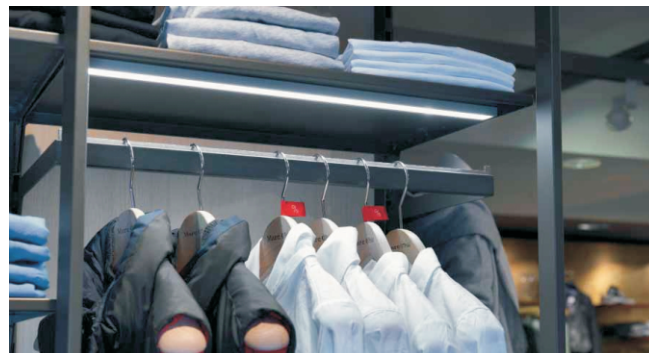
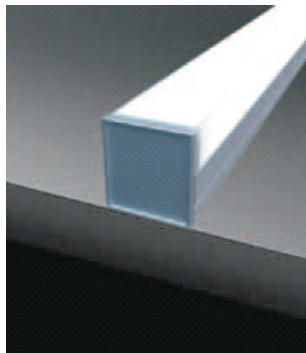
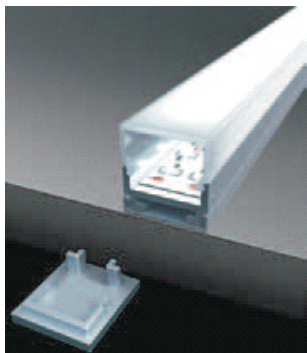
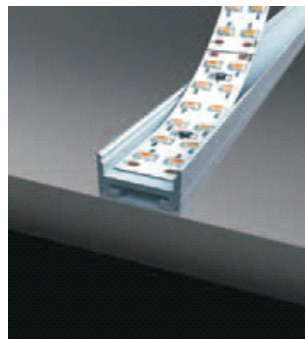
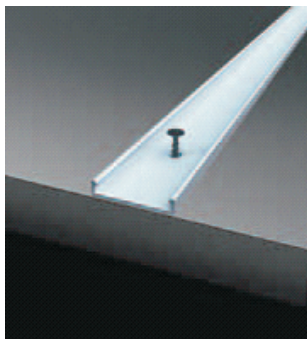
LED strip
Linear 140
140 led | 14 W | 1540lm



SM1919P



The outgoing light is concentrated with lens diffuser
Profile size: 19*19*2500mm
Diffuser:
PMMA Transparent



Recessed profile

The profile can be recessed into floor, wall or ceiling, the wide wings of the profile will cover the edges of insertion row completely.

The profile is coming with choices of three UV resistant PMMA diffusers: Opal matt, Frosted and Transparent. Endcaps are offered to help finishing the profile.

Continuous length at 2.5m, other customized lengths on request.

Available Finishes

Silver

White

Black



RC1707

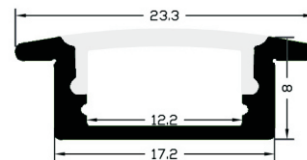
Recessed aluminum profile with height of 7mm only.
Dimension: 17*7*2500mm
Diffuser:
PMMA Opal matt/ Frosted/ Transparent

Accessories:

Endcap



LED strip
Linear 140
140 led | 14 W | 1540lm



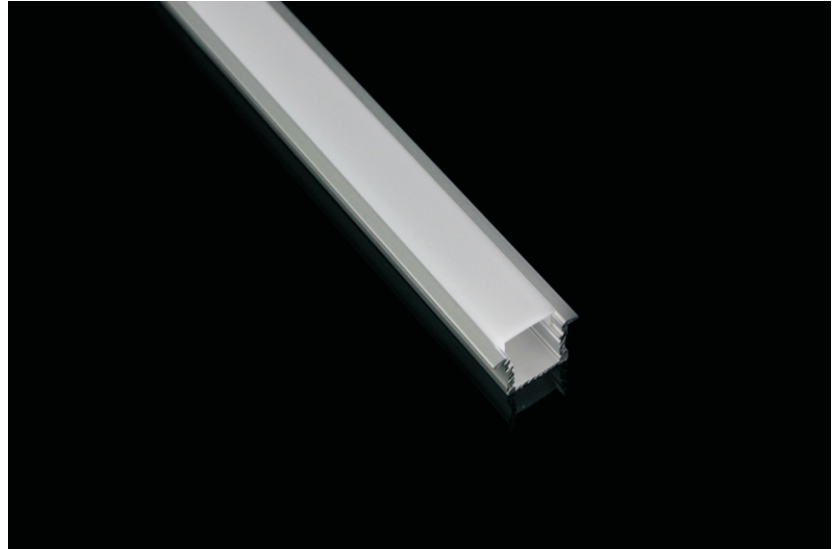
Accessories:



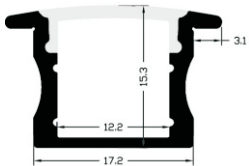
Endcap



LED strip
Linear 140
140 led | 14 W | 1540lm



RC1715



Recessed aluminum profile with height of 15mm only.
Dimension: 17*15*2500mm
Diffuser:
PMMA Opal matt/ Frosted/ Transparent



RC2310

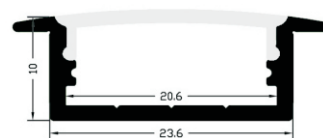
Recessed aluminum profile with larger space.
Dimension: 23*10*2500mm
Diffuser:
PMMA Opal matt/ Frosted/ Transparent

Accessories:

Endcap



LED strip
Linear 140
140 led | 14 W | 1540lm



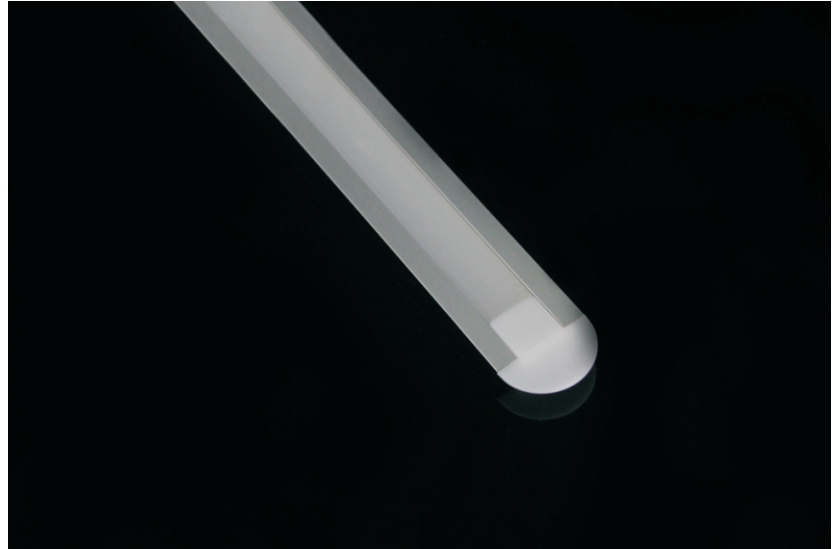
Accessories:



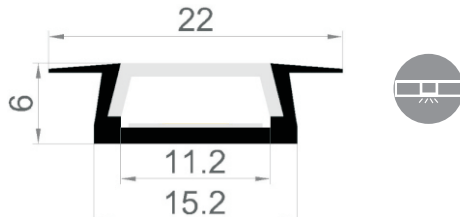
Endcap



LED strip
Linear 140
140 led | 14 W | 1540lm



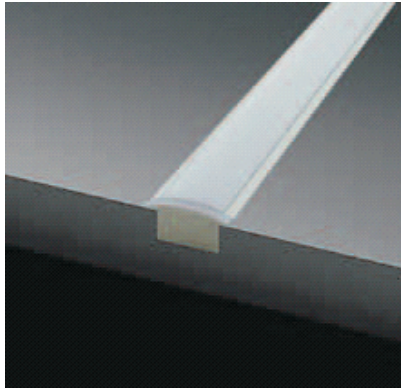
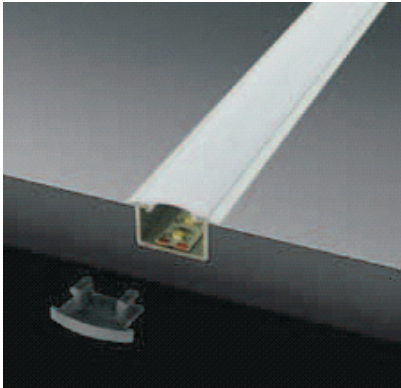
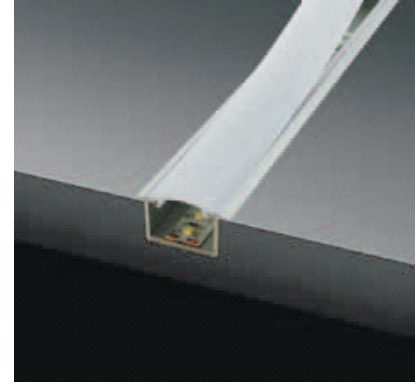
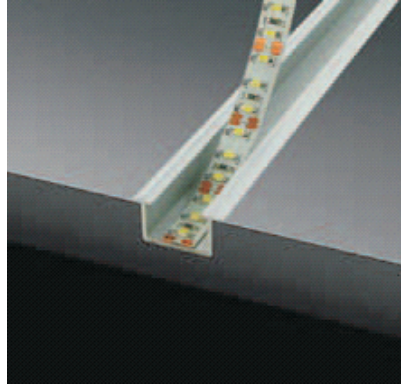
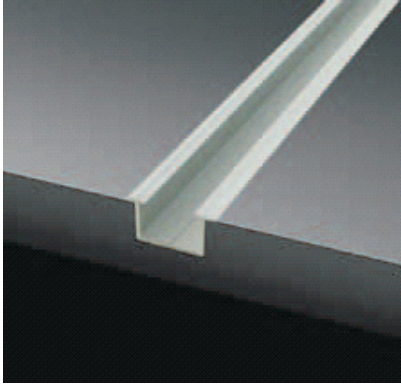
RC1506

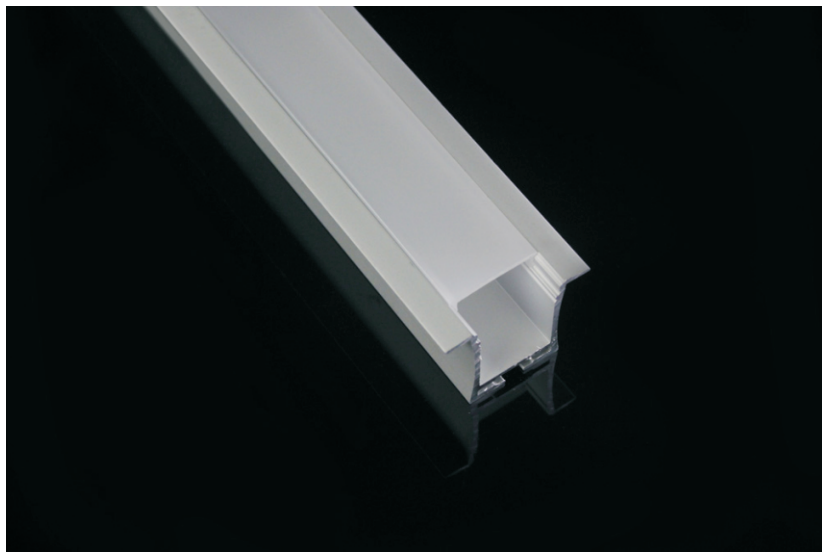


Slim Recessed aluminum profile with height of 6mm only.
Dimension: 15*6*2500mm
Diffuser:
PC milky/ Transparent



Installation:



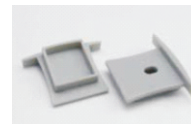


RC2328

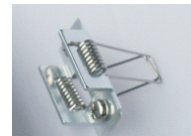
Deep Recessed aluminum profile with spring clip to be mounted in the ceiling.
Dimension: 23*28*2500mm
Diffuser:
PMMA Opal matt/ Frosted/ Transparent

Accessories:

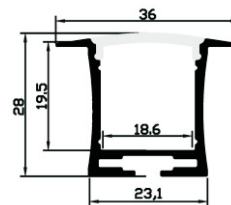
Endcap



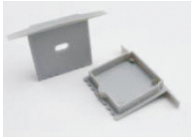
Mounting clip



LED strip
Linear 140
140 led | 14 W | 1540lm



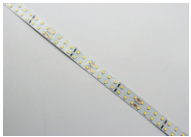
Accessories:



Endcap

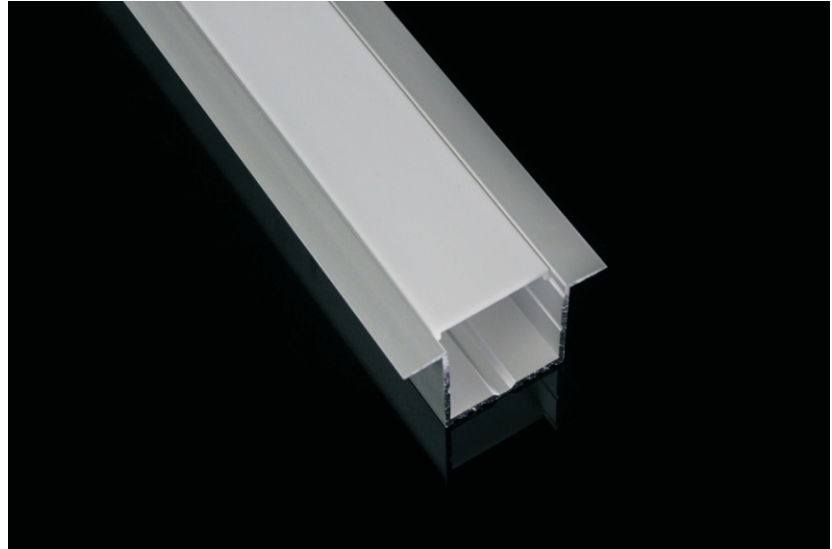


Mounting clip

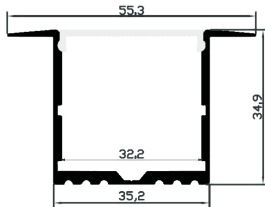


LED strip

Powerline 196
196 led | 21 W | 2520lm



RC3535

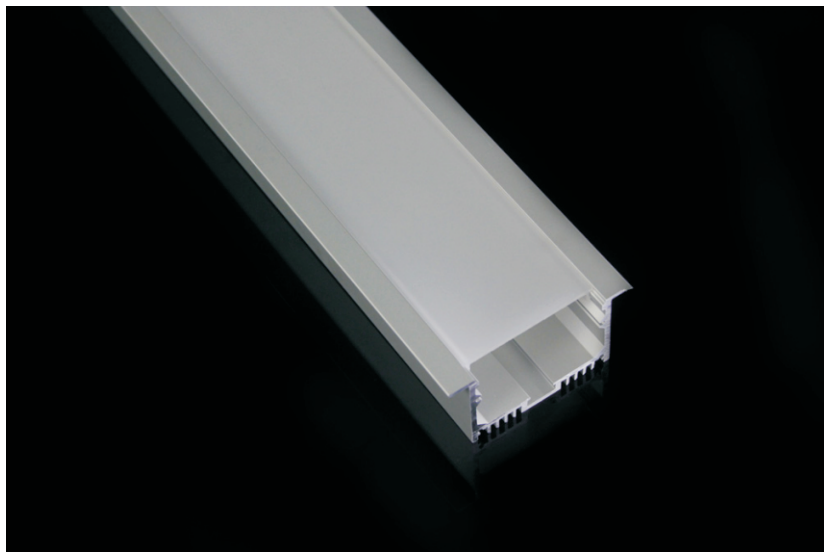


It's dedicated to build into the gypsum ceiling for main lighting.

Dimension: 35*35*2500mm

Diffuser:

PMMA Opal matt/ Frosted/ Transparent



RC5032

It's designed for general illumination in larger space.

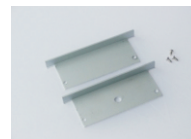
Dimension: 50*32*2500mm

Diffuser:

PC Milky

Accessories:

Endcap

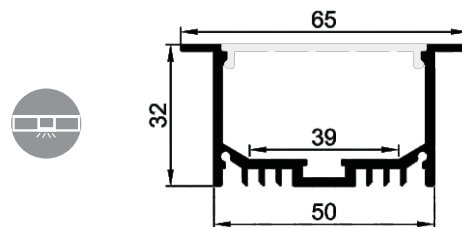


Mounting clip

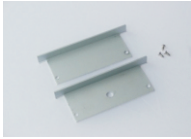


LED strip

LIN-560-2200
15W | 136lm/w



Accessories:



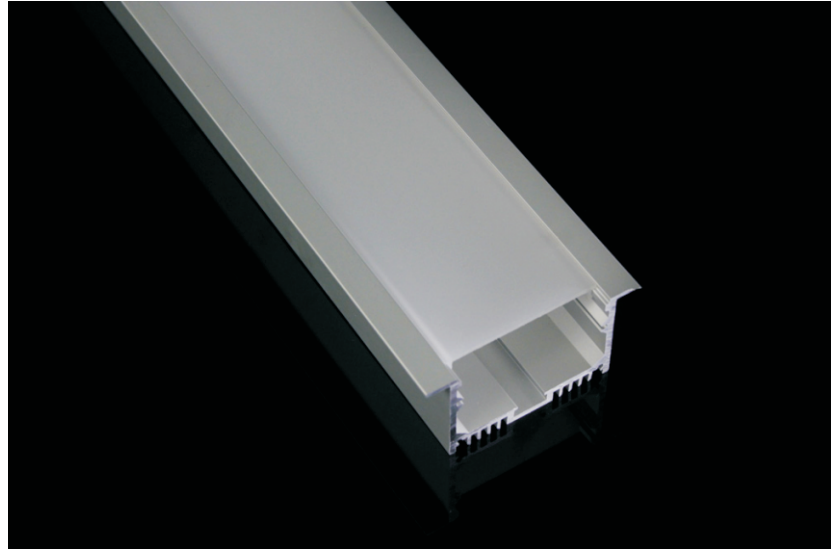
Endcap



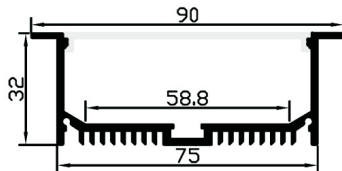
Mounting clip



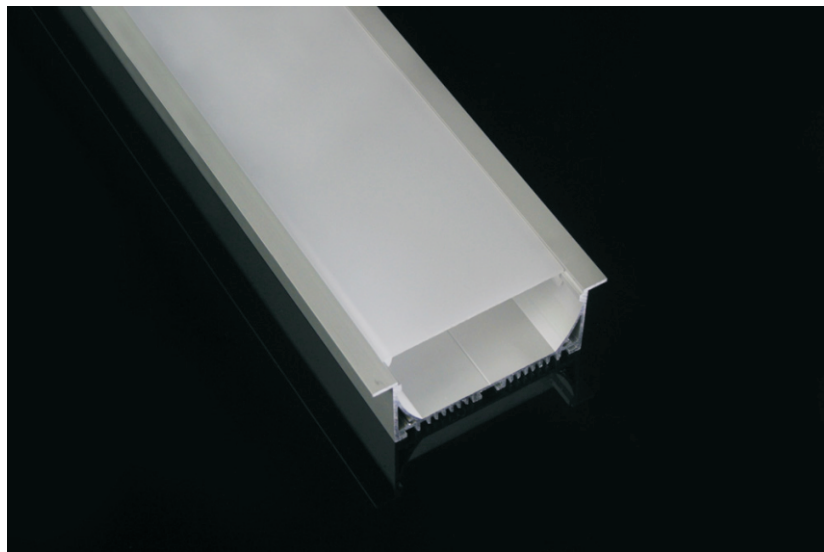
LED strip
LIN-560-2200
15W | 136lm/w



RC7532



It's designed for general illumination in huge space.
Dimension: 75*32*2500mm
Diffuser:
PC Milky



RC7535

It's designed for general illumination in huge space.

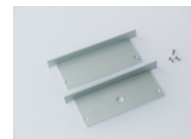
Dimension: 75*35*2500mm

Diffuser:

PC Milky

Accessories:

Endcap

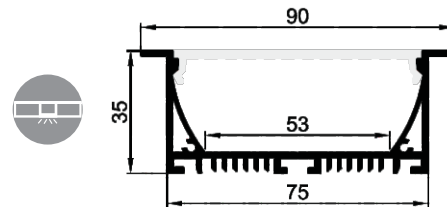


Mounting clip



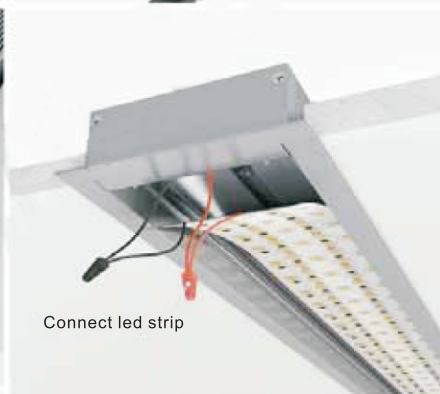
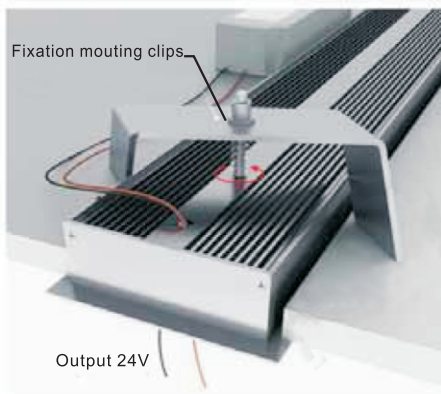
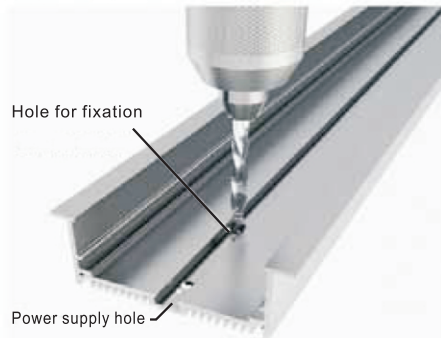
LED strip

LIN-560-2200
15W | 136lm/w





Installation:



Corner profile

The Corner profile has been designed to fit in at any corner LED lighting application. The light is directed by the shape of the profile in 45° degree angle to not be shining your eyes.

It comes with choices of three UV resistant PMMA diffusers:

Opal matt, Frosted and Transparent.

Endcaps are offered to help finishing the profile.

Continuous length at 2.5m, other customized lengths on request.



Available Finishes





CR1616

Profile is specially designed for corner contouring lighting.
Dimension: 16*16*2500mm
Dome Diffuser:
PMMA Opal matt/ Frosted/ Transparent

Corner profile

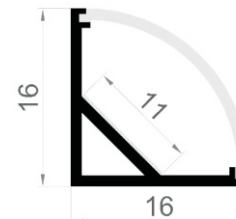
Endcap



Mounting clip



LED strip
Linear 140
140 led | 14 W | 1540lm



Corner profile



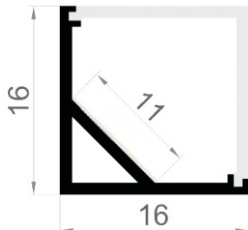
Endcap



Mounting clip



LED strip
Linear 140
140 led | 14 W | 1540lm



CS1616

Profile is specially designed for corner contouring lighting.
Dimension: 16*16*2500mm
Square Diffuser:
PMMA Opal matt/ Frosted/ Transparent



CR1818

Profile is specially designed for corner contouring lighting.
Dimension: 18*18*2500mm
Diffuser:
PMMA Opal matt/ Frosted/ Transparent

Corner profile

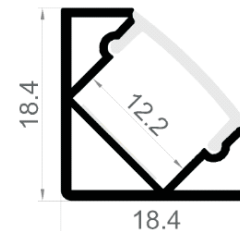
Endcap



Mounting clip



LED strip
Linear 140
140 led | 14 W | 1540lm



Corner profile



Endcap



Mounting clip

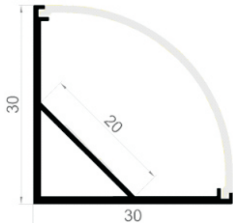


LED strip

Powerline 196
196 led | 21 W | 2520lm



CR3030



Profile is specially designed for corner contouring lighting.

Dimension: 30*30*2500mm

Dome Diffuser:

PC Opal matt/ Frosted/ Transparent



CS3030

Profile is specially designed for corner contouring lighting.
Dimension: 30*30*2500mm
Square Diffuser:
PC Opal matt/ Frosted/ Transparent

Corner profile

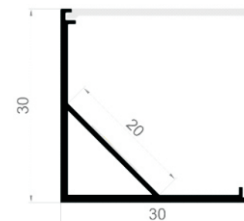
Endcap



Mounting clip

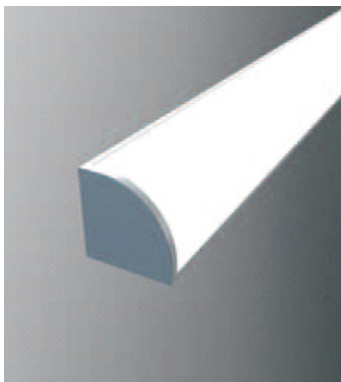


LED strip
Linear 140
140 led | 14 W | 1540lm





Installation



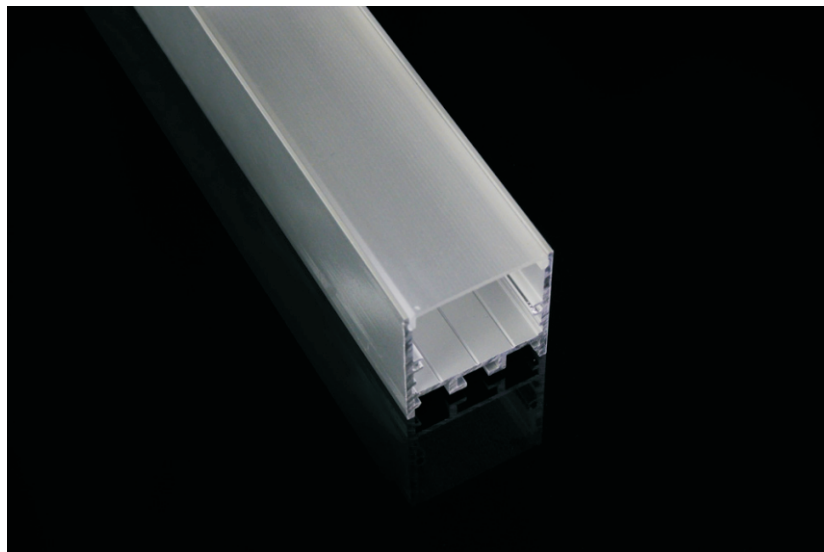
Suspended profile

Our suspended profiles are designed to suspend from the ceiling or surface mounting for installation of high power LEDs.
It comes with PC diffuser with high light transmittance.
Suspension kit and necessary hardware help for installation.
Continuous length at 2.5m, other customized lengths on request.



Available Finishes





AS3535

Suspended or surface mounting profile prepared for installation of high power LEDs.

Dimension: 35*35*2500mm

Diffuser:

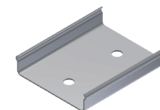
PMMA Opal matt/ Frosted/ Transparent

Accessories

Endcap
Aluminum



Mounting clip

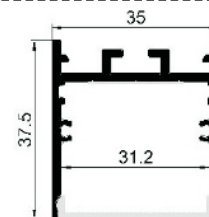


Suspension kit
standard length 2m



LED strip

LIN-560-2200
15.3W | 132lm/w



Accessories



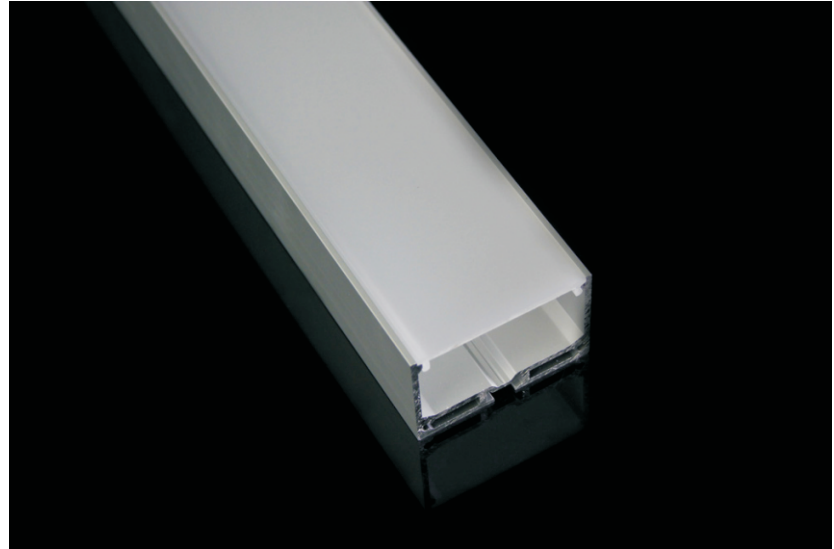
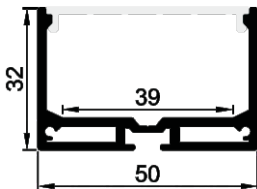
Endcap
Aluminum



Suspension kit
standard length 2m

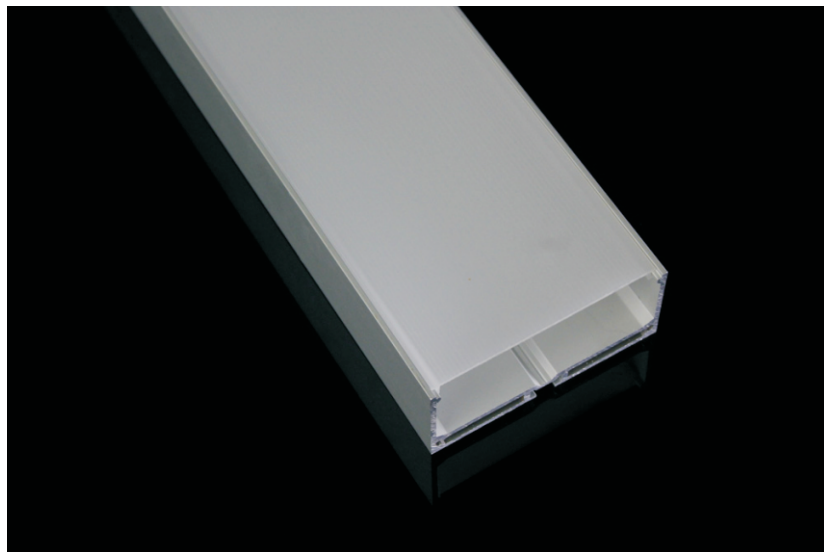


LED strip
LIN-560-2200
15.3W | 132lm/w



AS5032

Suspended or surface mounting profile prepared for installation of high power LEDs.
Dimension: 50*32*2500mm
Diffuser:
PC Milky



AS7532

Suspended or surface mounting profile prepared for installation of high power LEDs.

Dimension: 75*32*2500mm

Diffuser:

PC Milky

Accessories

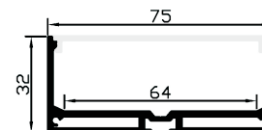
Endcap
Aluminum



Suspension kit
standard length 2m



LED strip
LIN-560-2200
15.3W | 132lm/w



Accessories



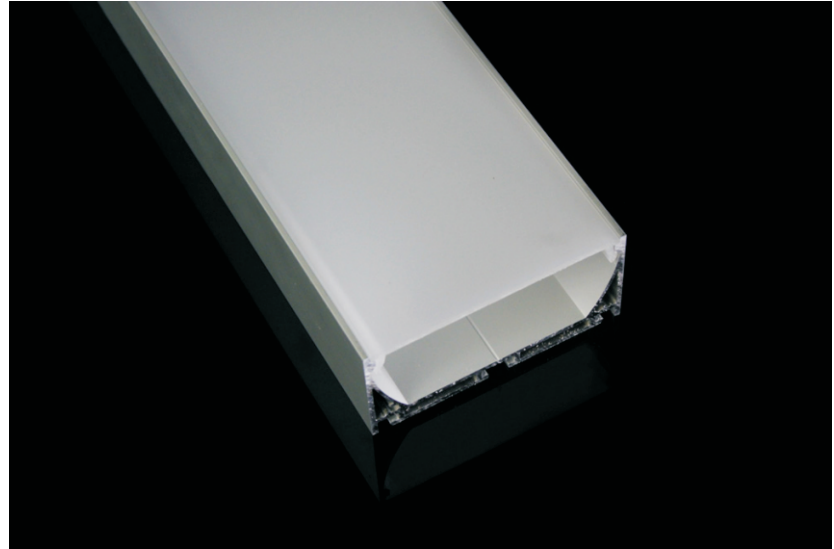
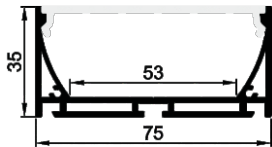
Endcap
Aluminum



Suspension kit
standard length 2m



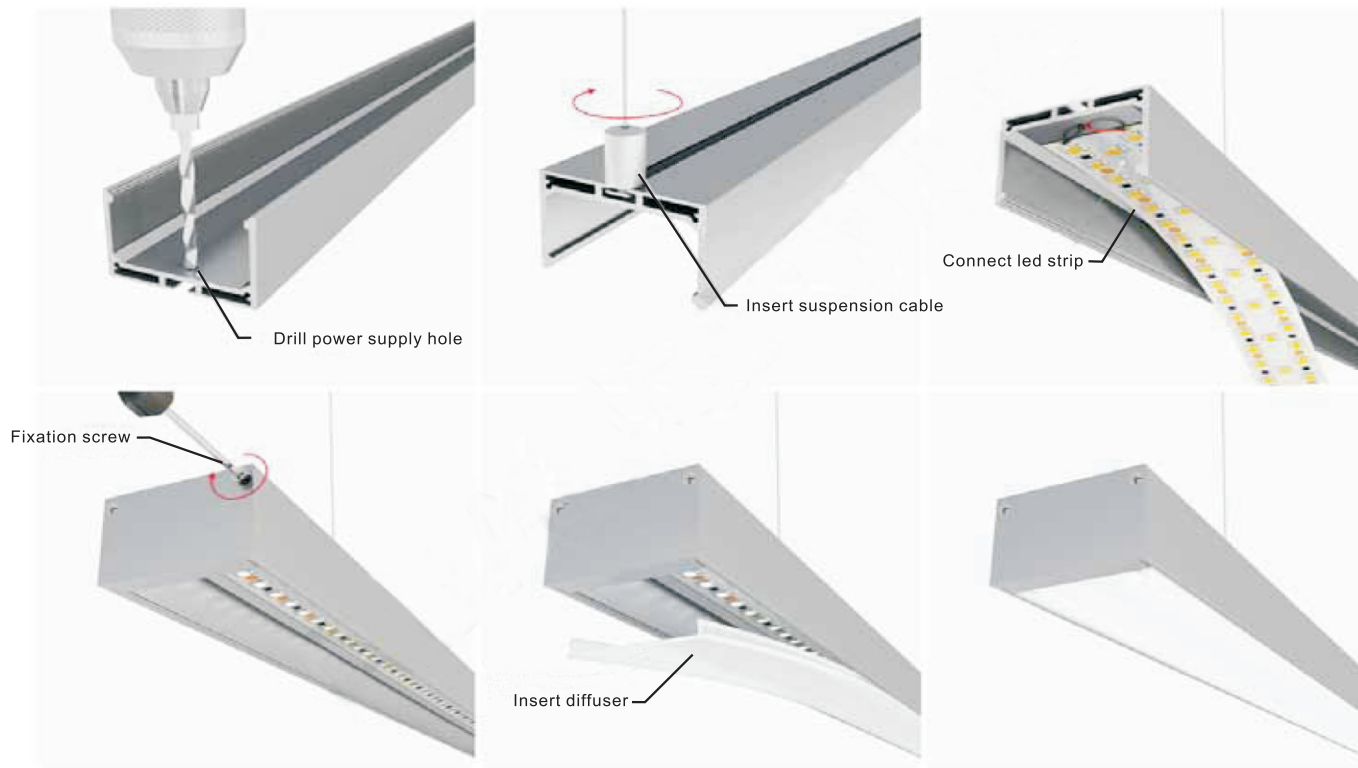
LED strip
LIN-560-2200
15.3W | 132lm/w



AS7535

Suspended or surface mounting profile prepared for installation of high power LEDs.
Dimension: 75*35*2500mm
Diffuser:
PC Milky

Installation



Accessories



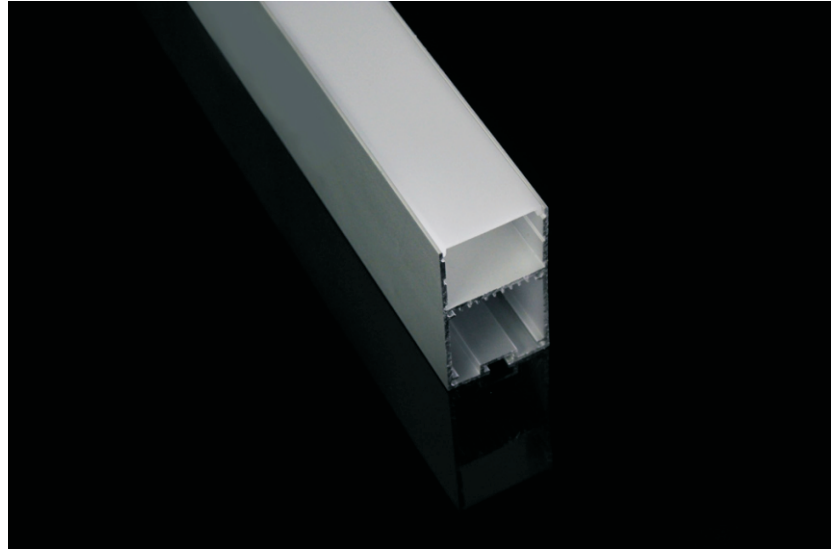
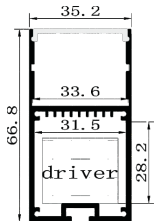
Endcap
Aluminum



Suspension kit
standard length 2m

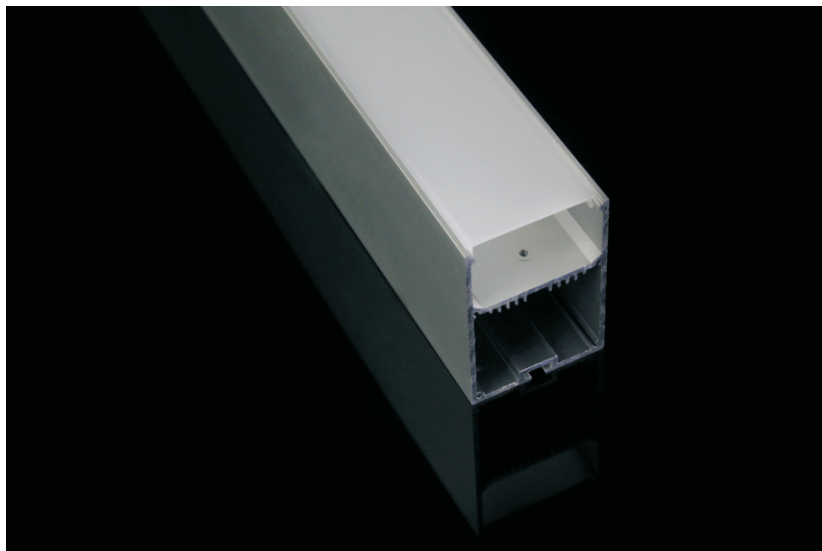


LED strip
LIN-560-2200
15.3W | 132lm/w



AS3567

Profile construction enables mounting of linear power supply inside.
Dimension: 35*67*2500mm
Diffuser:
PC Milky



AS4970

Profile construction enables mounting of linear power supply inside.

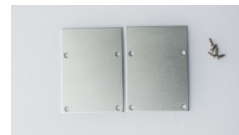
Dimension: 49*70*2500mm

Diffuser:

PC Milky

Accessories

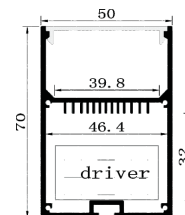
Endcap
Aluminum



Suspension kit
standard length 2m



LED strip
LIN-560-2200
15.3W | 132lm/w



Accessories



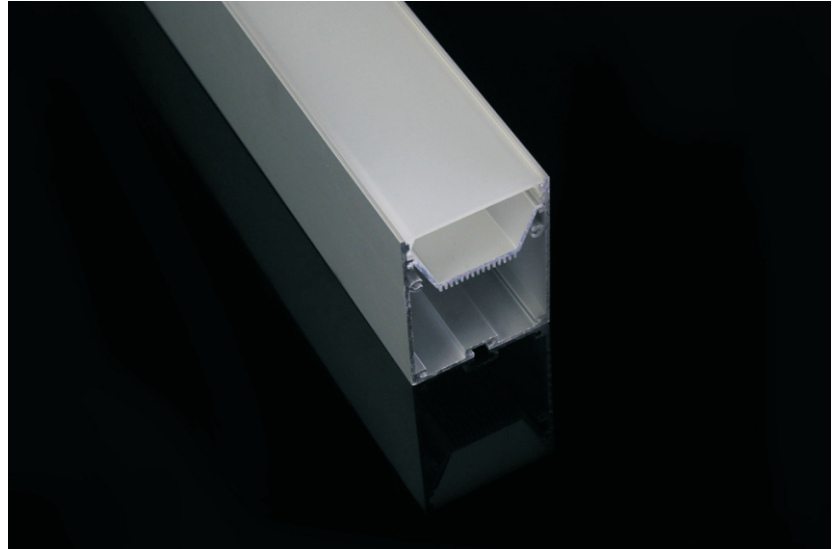
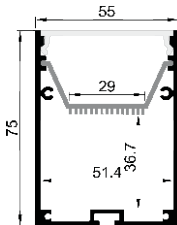
Endcap
Aluminum



Suspension kit
standard length 2m

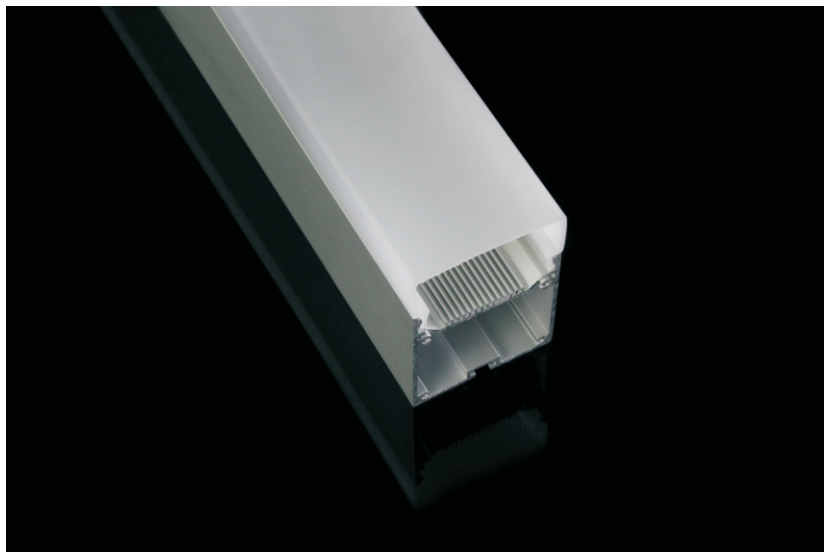


LED strip
LIN-560-2200
15.3W | 132lm/w



AS5575

Profile with removable plate for easy mounting.
Dimension: 55*75*2500mm
Diffuser:
PC Milky



AS5575D

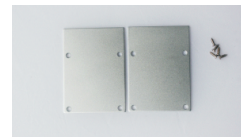
Profile with drop lens allows more light to emit through two sides.

Dimension: 55*75*2500mm

Diffuser:
PC Milky

Accessories

Endcap
Aluminum

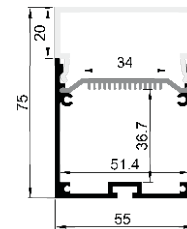


Suspension kit
standard length 2m



LED strip

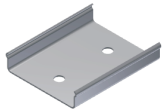
LIN-560-2200
15.3W | 132lm/w



Accessories



Endcap
Aluminum



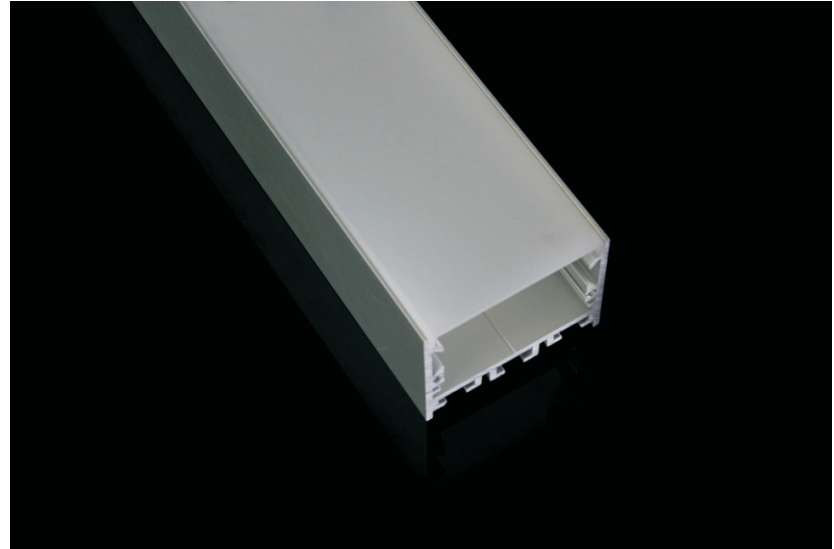
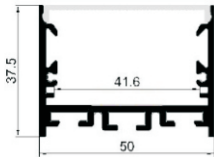
Mounting clip



Suspension kit
standard length 2m

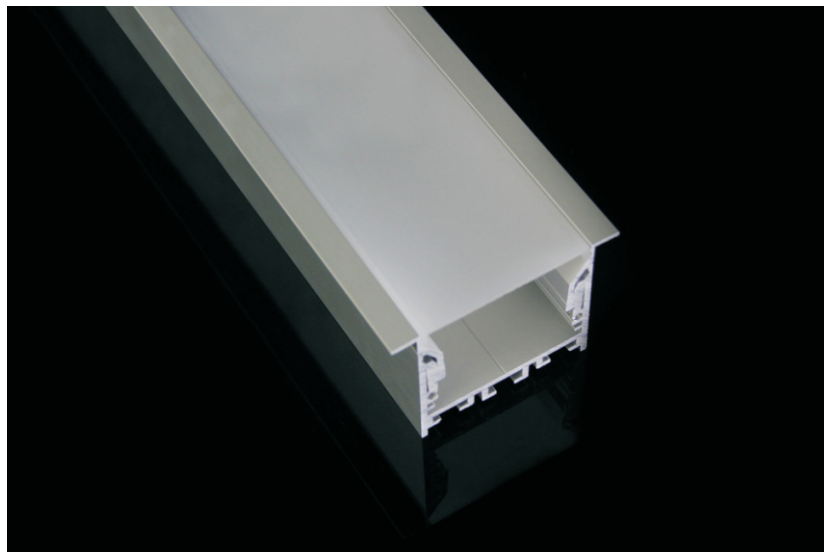


LED strip
LIN-560-2200
15.3W | 132lm/w



AS50

As50 series is flexible in DIY solution as suspended fixture.
Dimension: 50*37*2500mm
Diffuser:
PMMA Milky



AS-R50

As50 series is flexible in DIY solution as recessed fixture.
Dimension: 50*45*2500mm
Diffuser:
PMMA Milky

Accessories

Endcap
Aluminum



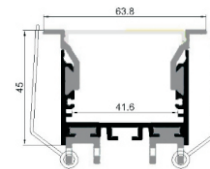
Spring clip



Suspension kit
standard length 2m



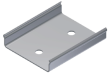
LED strip
LIN-560-2200
15.3W | 132lm/w



Accessories



Endcap
Aluminum



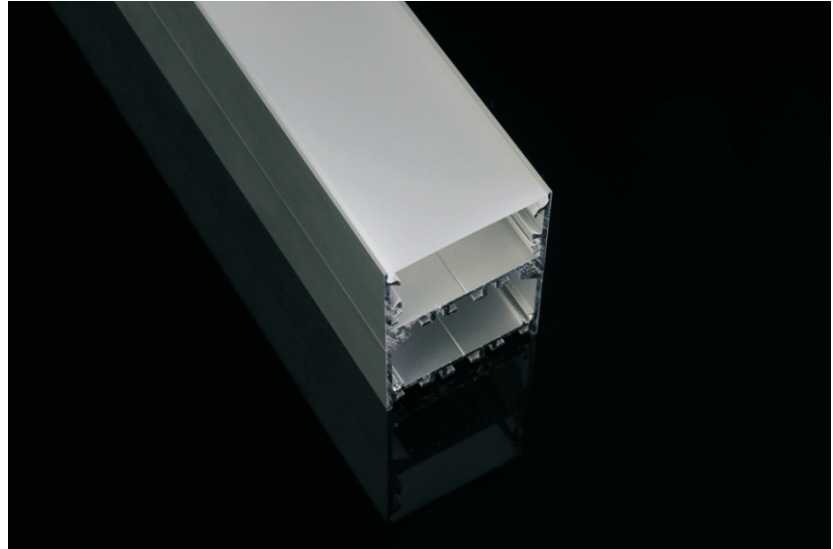
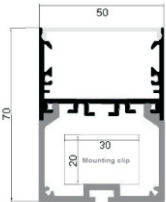
Mounting clip



Suspension kit
standard length 2m

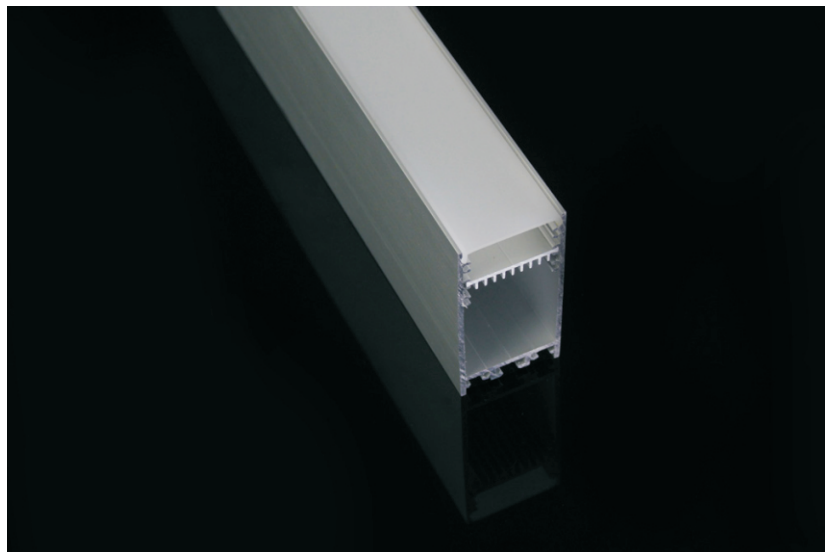


LED strip
LIN-560-2200
15.3W | 132lm/w



AS-S50

Dual Profile construction enables mounting of power supply inside easily.
Dimension: 50*70*2500mm
Diffuser:
PMMA Milky



AS-35

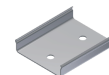
Linear Profile with removable plate for easy mounting.
Dimension: 35*68*2500mm
Diffuser: PMMA Milky

Accessories

Endcap
Aluminum



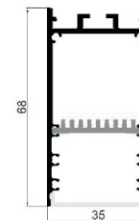
Mounting clip



Suspension kit
standard length 2m



LED strip
LIN-560-2200
15.3W | 132lm/w



Accessories

Endcap
Aluminum



Suspension kit
standard length 2m

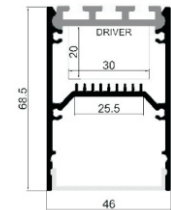


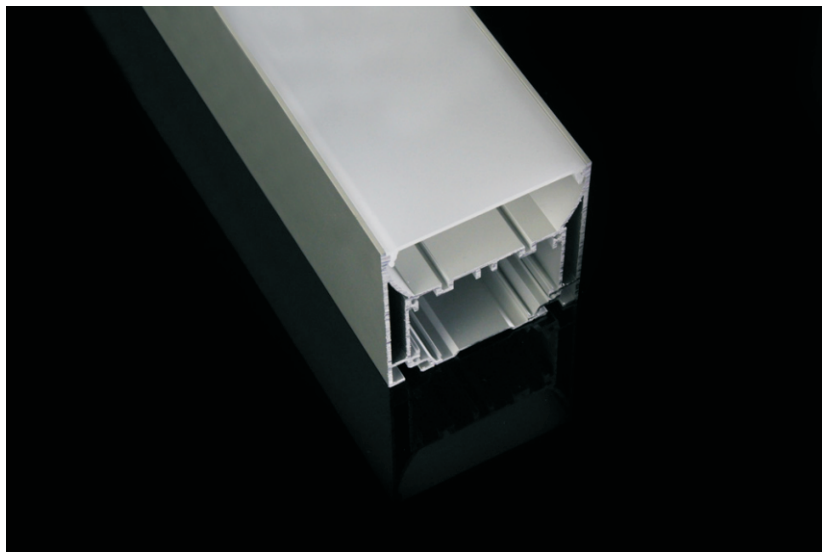
LED strip
LIN-560-2200
15.3W | 132lm/w



AS-46

Profile with removable back plate for easy mounting.
Dimension: 46*68*2500mm
Diffuser: PMMA Milky





AS-75

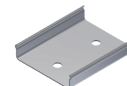
Extruded aluminum body with die cast endcaps,
high light transmittance PC diffuser creating
smooth and uniform lighting distribution.
Dimension: 75*75*2500mm
Diffuser: PC Milky

Accessories

Endcap
Aluminum



Mounting clip



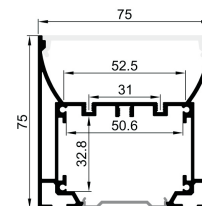
Suspension kit
standard length 2m



Canopy



LED strip
LIN-560-2200
15.3W | 132lm/w



Accessories



Endcap
Aluminum



Mounting clip



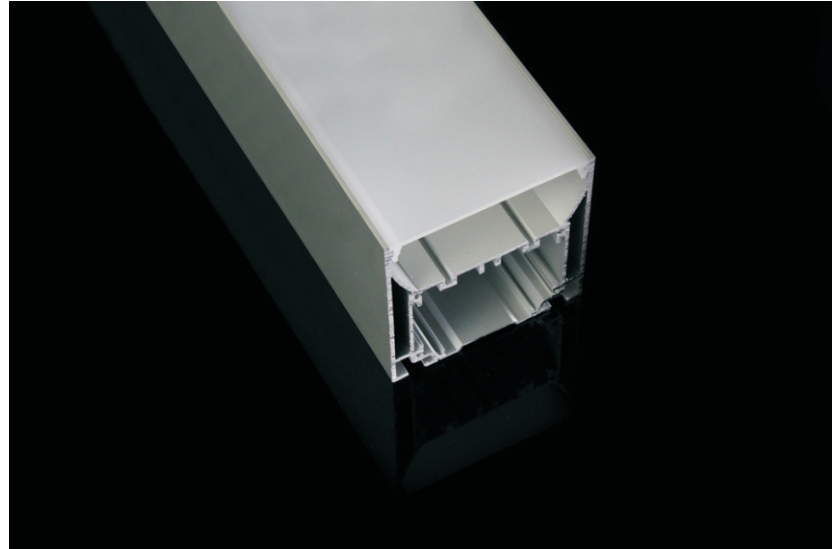
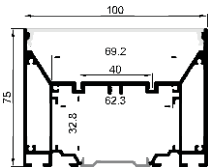
Suspension kit
standard length 2m



Canopy



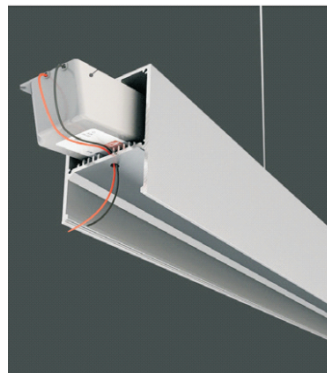
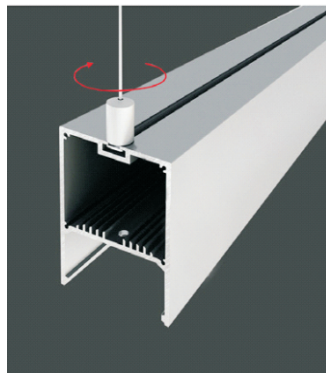
LED strip
LIN-560-2200
15.3W | 132lm/w



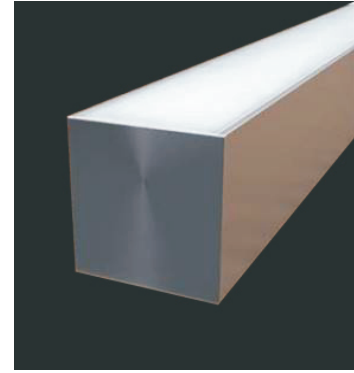
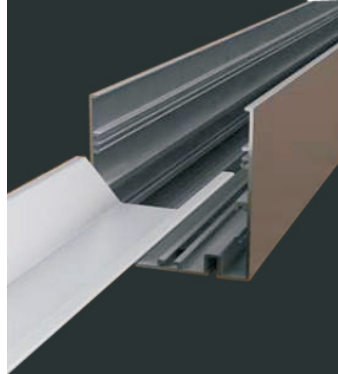
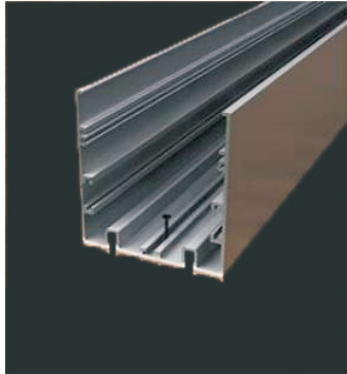
AS-100

Extruded aluminum body with die cast endcaps,
high light transmittance PC diffuser creating
smooth and uniform lighting distribution.
Dimension: 100*75*2500mm
Diffuser: PC Milky

Installation



Installation





DS5090

Extruded aluminum body with Direct& Indirect light distribution.
Dimension: 50*90*2500mm
Diffuser: PC Milky

Accessories

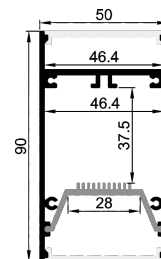
Endcap
Aluminum



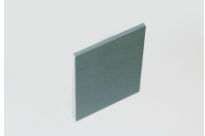
Suspension kit
standard length 2m



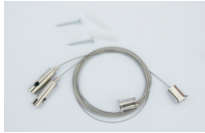
LED strip
LIN-560-2200
15.3W | 132lm/w



Accessories



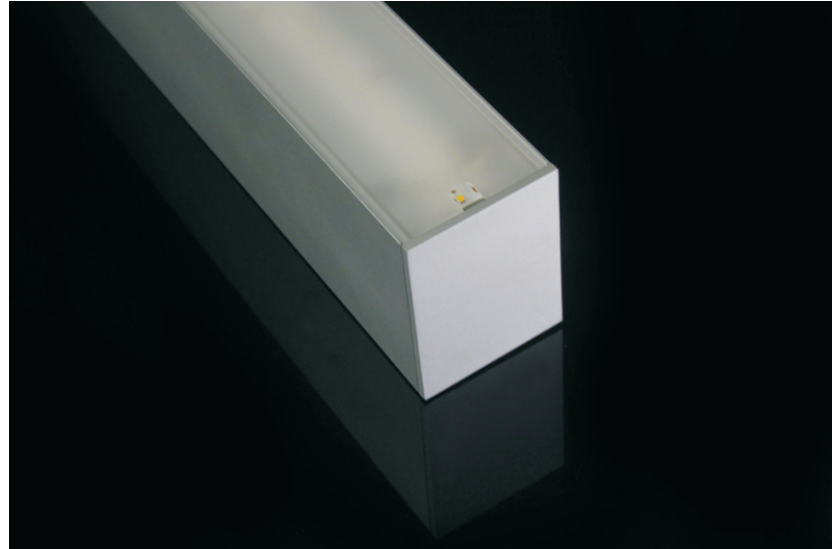
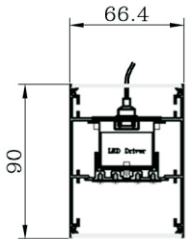
Endcap
Aluminum
screwless



Suspension kit
standard length 2m

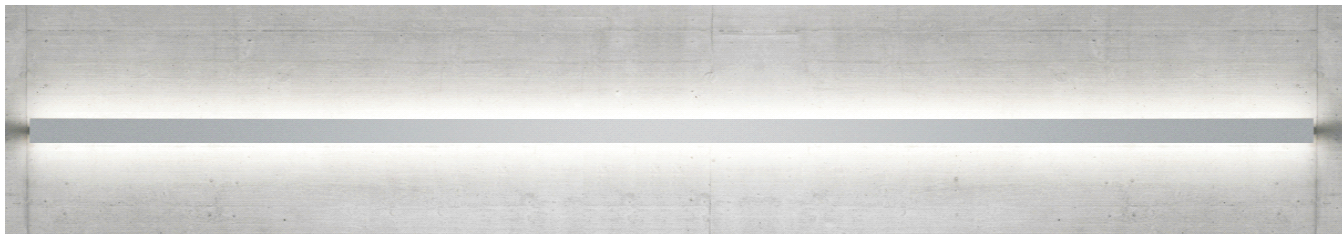


LED strip
LIN-560-2200
15.3W | 132lm/w



DS6890

Extruded aluminum body with Direct& Indirect light distribution.
Dimension: 68*90*2500mm
Diffuser: PC Milky



Accessories



Endcap



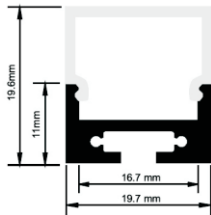
Mounting clip



Suspension kit
standard length 2m



LED strip
Linear 140
140 led | 14 W | 1540lm



AS1911

Compact profile with square diffuser makes it perfect for surface and suspended installation.
Dimension: 19*11*2500mm
Diffuser: PC Milky



AS1911R

Compact profile with dome diffuser makes it perfect for surface and suspended installation.

Dimension: 19*11*2500mm

Diffuser: PC Milky

Accessories

Endcap



Mounting clip

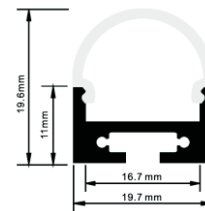


Suspension kit
standard length 2m



LED strip

Linear 140
140 led | 14 W | 1540lm



Accessories



Endcap



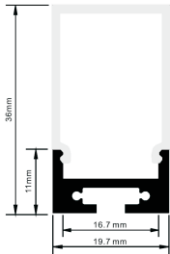
Mounting clip



Suspension kit
standard length 2m



LED strip
Linear 140
140 led | 14 W | 1540lm

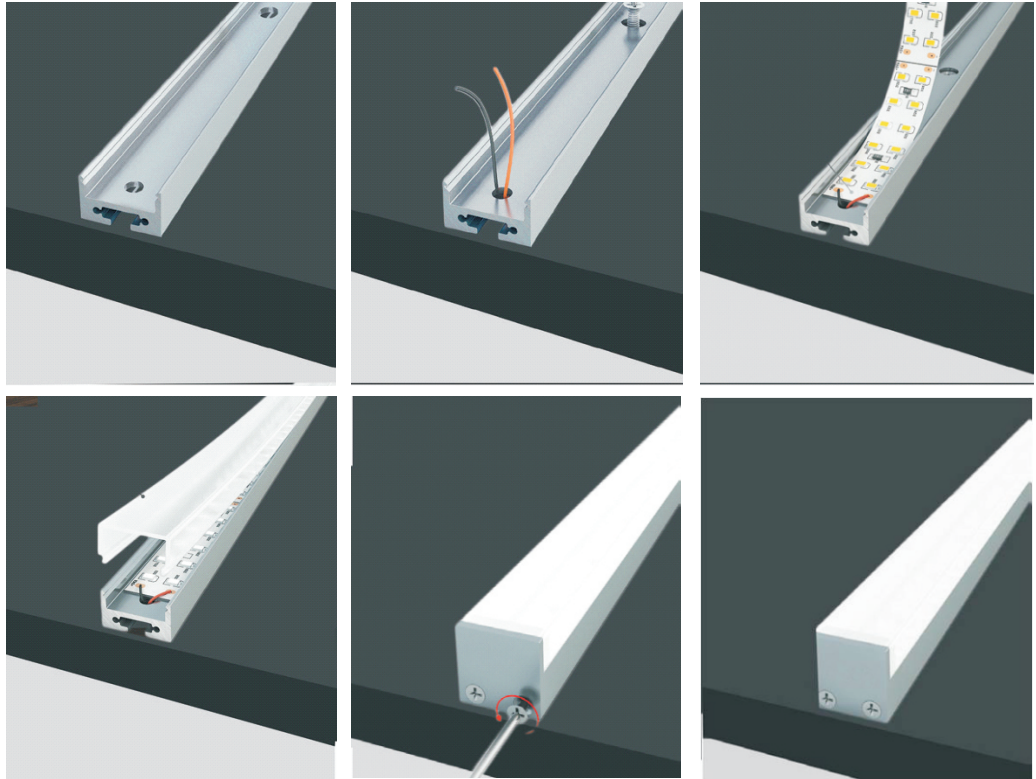


AS1911P

Compact profile with rectangle diffuser allows more light to emit through the sides.
Dimension: 19*11*2500mm
Diffuser: PC Milky



Installation





AS-Round

Round shape profile with round diffuser designed for suspended or wall mount installation.

Dimension: Dia20.8*2500mm

Diffuser:

PMMA Opal matt/ Frosted/ Transparent

Accessories

Endcap



Suspension kit
standard length 2m



LED strip

Linear 140
140 led | 14 W | 1540lm



Accessories



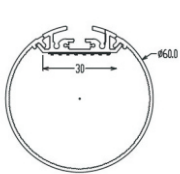
Endcap



Suspension kit
standard length 2m



LED strip



AS-Round 60

Round shape profile with round diffuser designed for suspended
Dimension: Dia 60 *2500mm
Diffuser: PC Milky



Wall mount

This aluminum profile has been designed to instal into wall with several possible directions light output.

It comes with choices of three UV resistant PMMA diffusers:
Opal matt, Frosted and Transparent.
Fixed with mounting clips for easy installation.

Continuous length at 2.5m, other customized lengths on request.

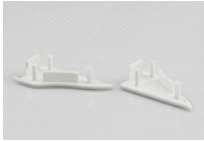
Available Finishes

Silver

White

Black

Accessories



Endcap

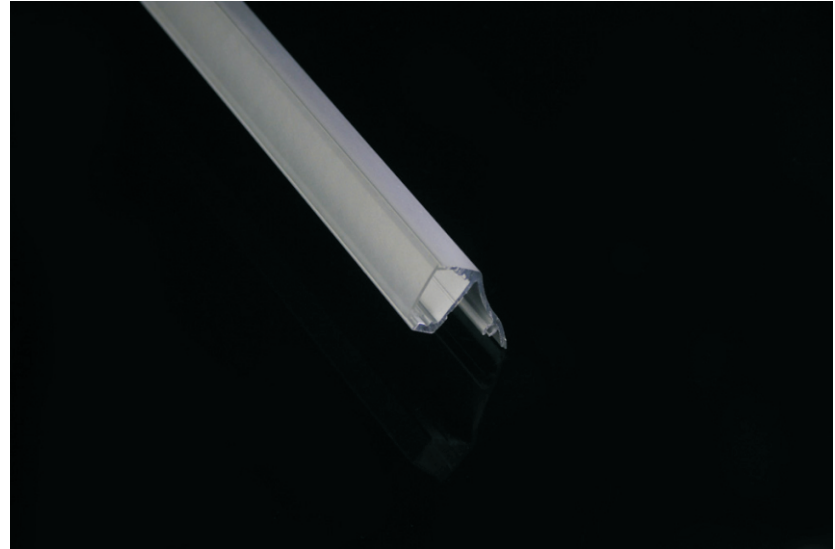
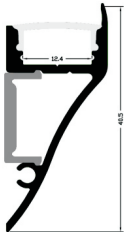


Mounting clip



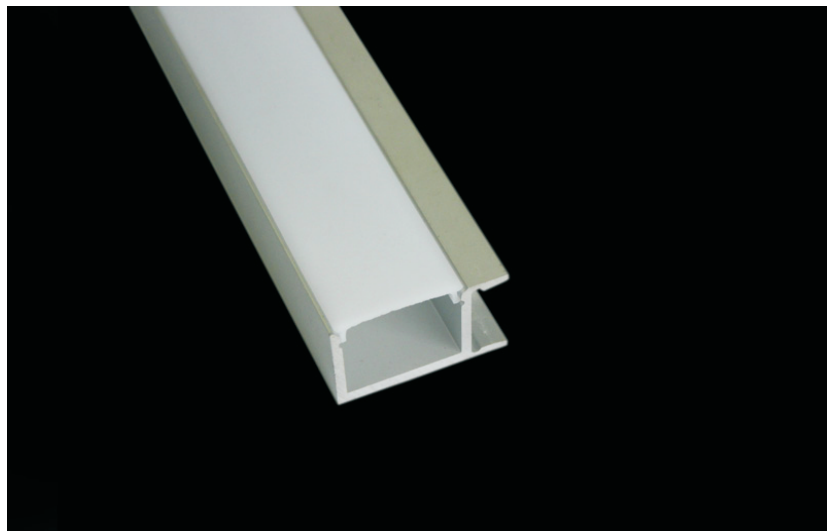
LED strip

Linear 140
140 led | 14 W | 1540lm



WA001

Wall mount profile with up direction light output.
Dimension: 18*40*2500mm
Diffuser:
PMMA Opal matt/ Frosted/ Transparent



WA002

Wall mount profile with up direction light output.

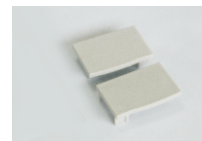
Dimension: 30*18*2500mm

Diffuser:

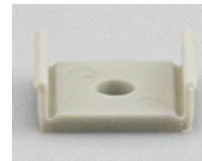
PMMA Opal matt/ Frosted/ Transparent

Accessories

Endcap

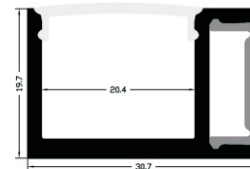


Mounting clip

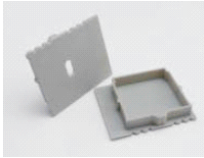


LED strip

Linear 140
140 led | 14 W | 1540lm



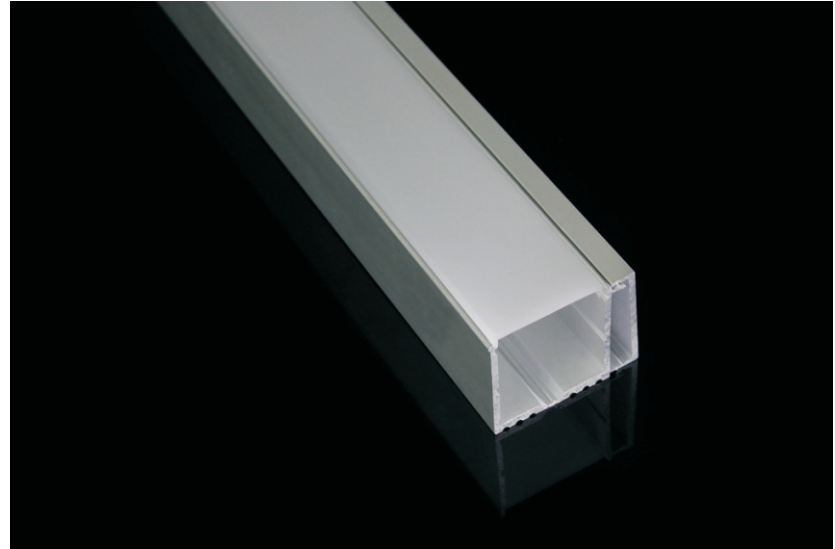
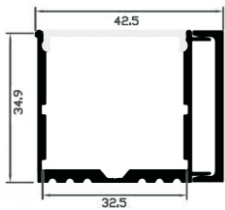
Accessories



Endcap

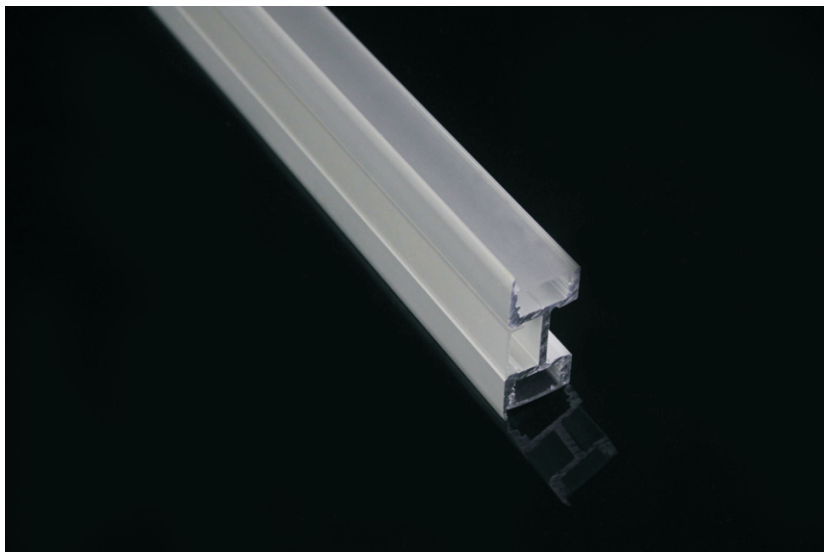


LED strip
Powerline 196
196 led | 21 W | 2520lm



WA003

Wall mount profile with sliding plate.
Dimension: 35*35*2500mm
Diffuser:
PMMA Opal matt/ Frosted/ Transparent



WA004

Wall mount profile with three directions light output.
Dimension: 18*41*2500mm
Diffuser:
PMMA Opal matt/ Frosted/ Transparent

Accessories

Endcap

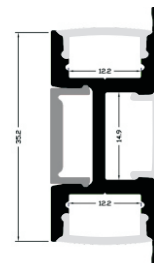


Mounting clip



LED strip

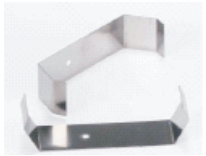
Linear 140
140 led | 14 W | 1540lm



Accessories



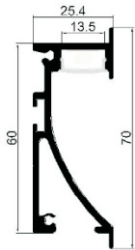
Endcap
aluminum



Mounting clip



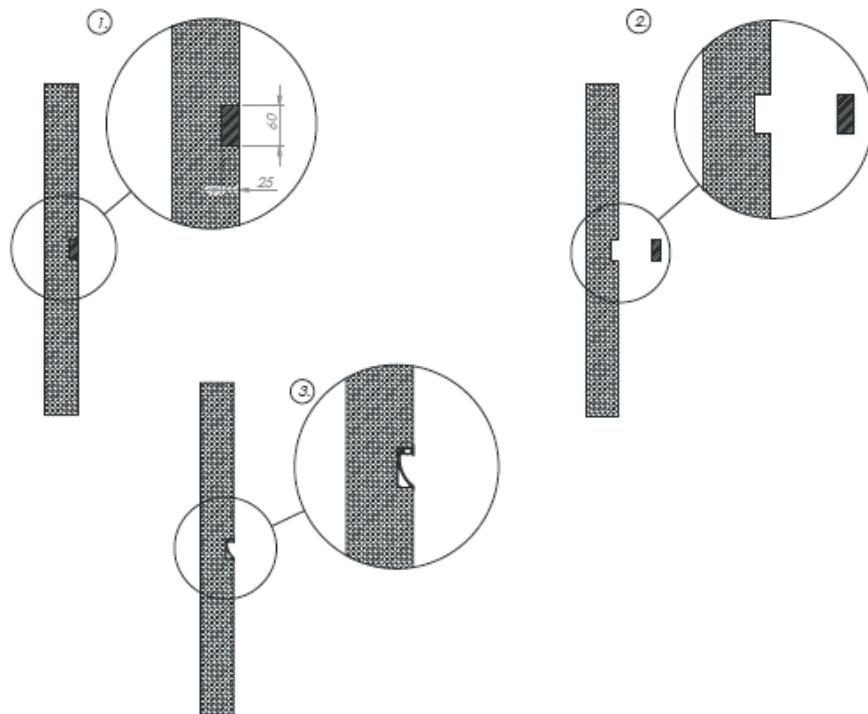
LED strip
Linear 140
140 led | 14 W | 1540lm



WA005

The profile is for build-in into the wood structure walls and direct the LED light to the floor.
Dimension: 25*70*2500mm
Diffuser:
PMMA Opal matt/ Frosted/ Transparent

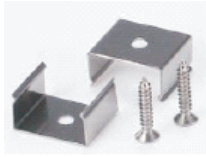
Installation



Accessories



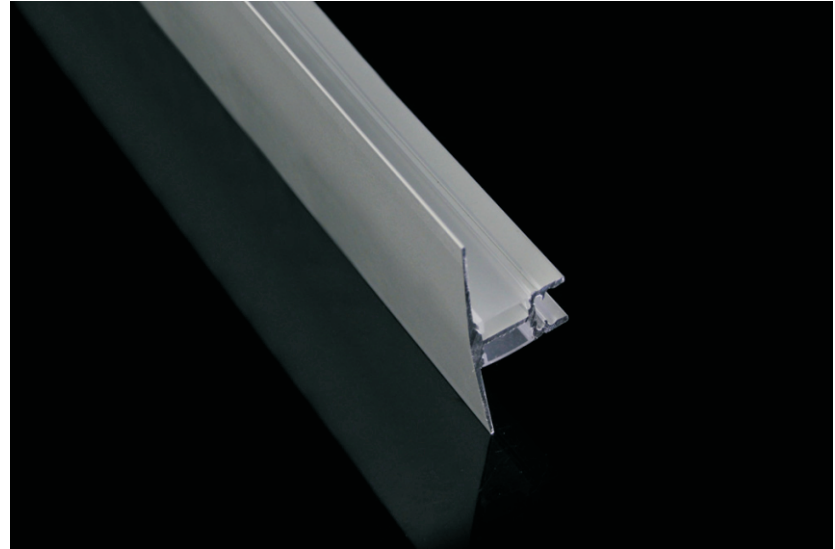
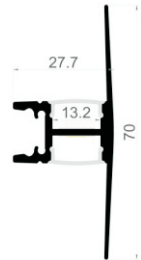
Endcap
aluminum



Mounting clip

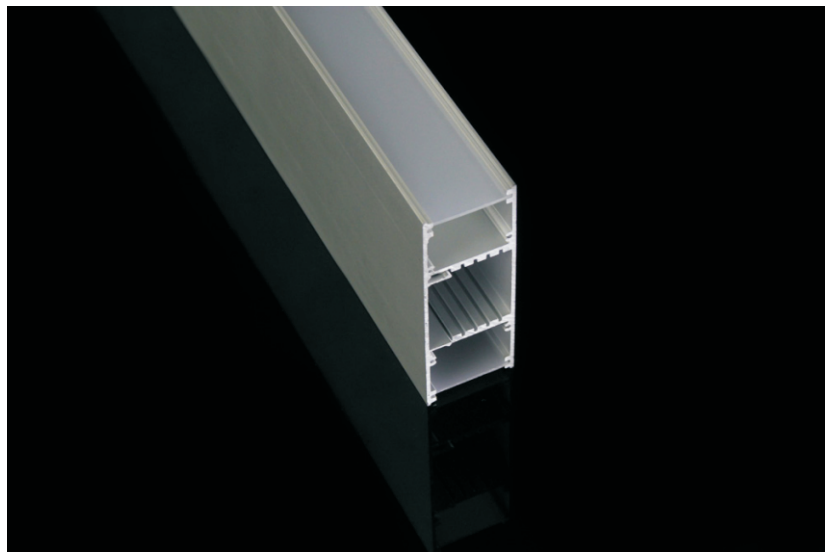


LED strip
Linear 140
140 led | 14 W | 1540lm



WA006

Wall mount profile with up and down directions light output.
Dimension: 28*70*2500mm
Diffuser:
PMMA Opal matt/ Frosted/ Transparent

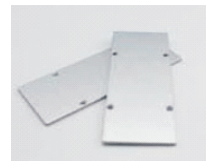


WA3385

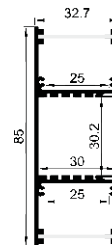
Wall mount profile with up and down directions light output.
Dimension: 33*85*2500mm
Diffuser:
PC milky

Accessories

Endcap
aluminum



LED strip
Powerline 196
196 led | 21 W | 2520lm



Installation



Stair profile

The Stair profile is designed for mounting on the edges of stairs, platforms, etc.

It is designed for step illumination and warning light.

The anti-slip rubber on the upper side works as the cover for LED strip.

Endcaps are fitted on place for easy installation.

Continuous length at 2.5m, other customized lengths on request.

Available Finishes

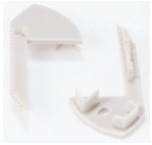
Silver

White

Black



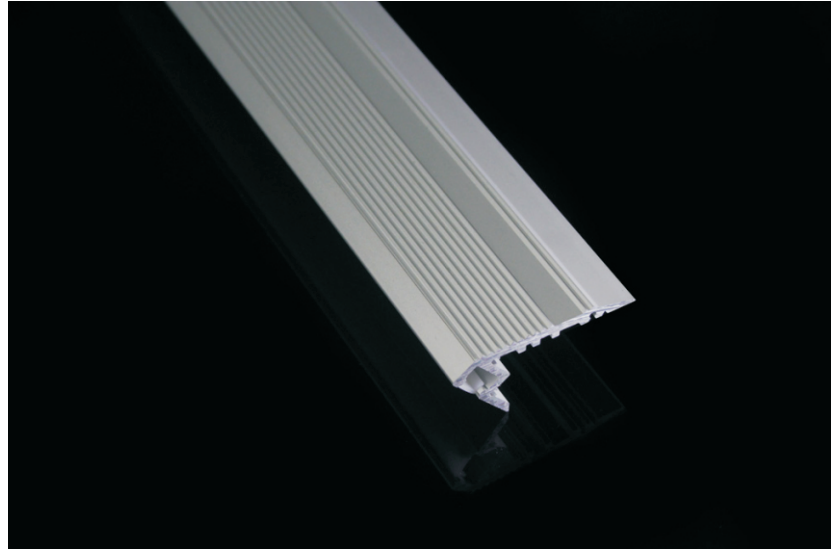
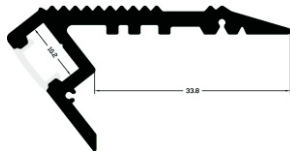
Accessories



Endcap



LED strip
Linear 140
140 led | 14 W | 1540lm



ST001

It's designed for steps illumination in darker room, walk over safety and time ware out resistant.

Dimension: 34*10*2500mm

Diffuser:

PC Milky



ST002

It is designed for step illumination and warning light.
The anti-slip rubber on the upper side works as the cover
for LED strip.

Dimension: 81*34*2500mm

Diffuser:

PC Opal/ Frosted/ Transparent

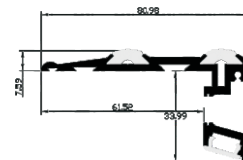
Accessories

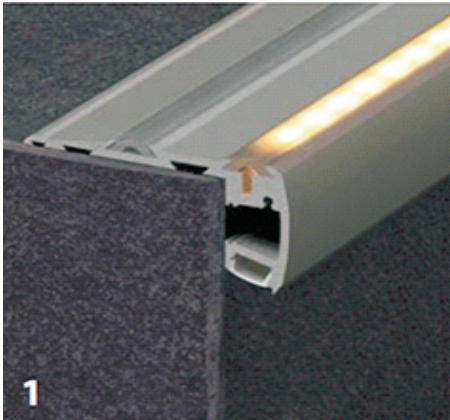
Endcap



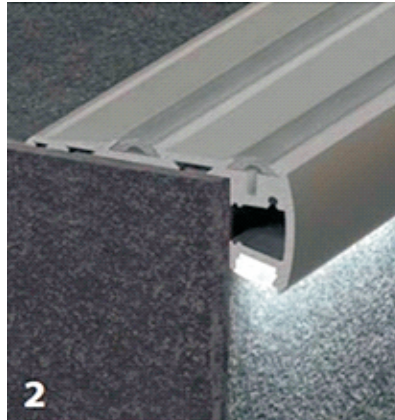
LED strip

Linear 140
140 led | 14 W | 1540lm

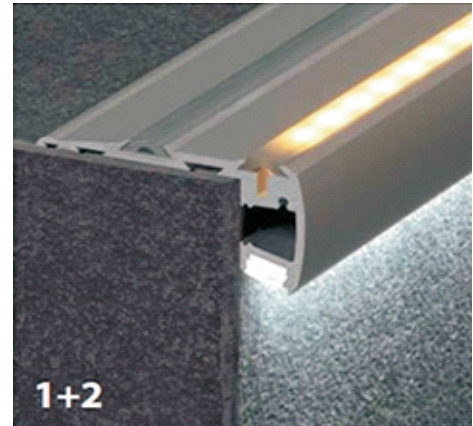




warning light



step illumination lights



light at same time



Floor profile

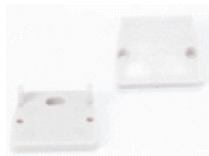
The profile is designed for mounting in the floor.
The diffuser is made of polycarbonate, 3mm thickness and damage resistant allows you to walk over the profile.
The extrusion, together with LEDs, cover and caps should be used only in a version specially sealed with neutral silicone.
Continuous length at 2.5m, other customized lengths on request.



Available Finishes



Accessories

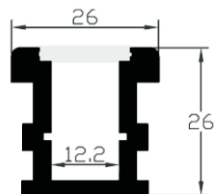


Endcap



LED strip

Linear 140
140 led | 14 W | 1540lm



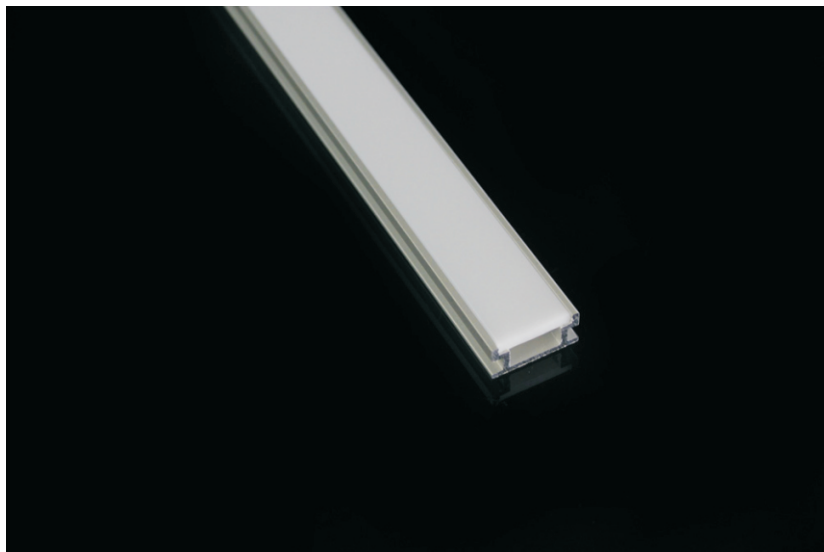
FL001

The profile should be used only in a version specially sealed with neutral silicone.

Dimension: 26*26*2500mm

Diffuser:

3mm thickness PC milky



FL002

Small profile should be used only in a version specially sealed with neutral silicone.

Dimension: 20*8*2500mm

Diffuser:

3mm thickness PC milky

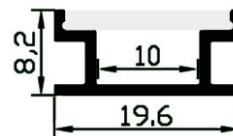
Accessories

Endcap



LED strip

Linear 140
140 led | 14 W | 1540lm



Accessories



Endcap

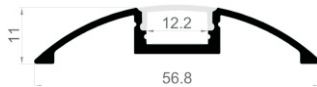


LED strip

Linear 140
140 led | 14 W | 1540lm



FL003



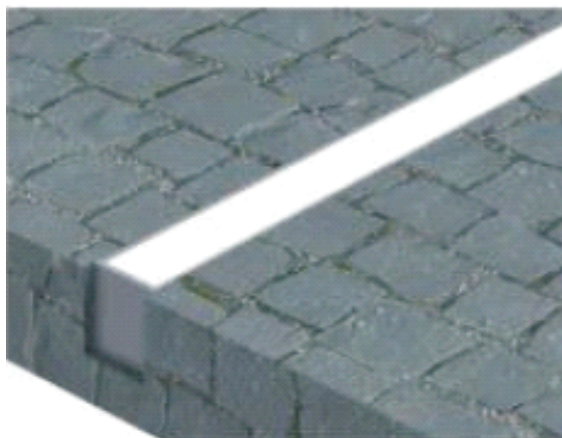
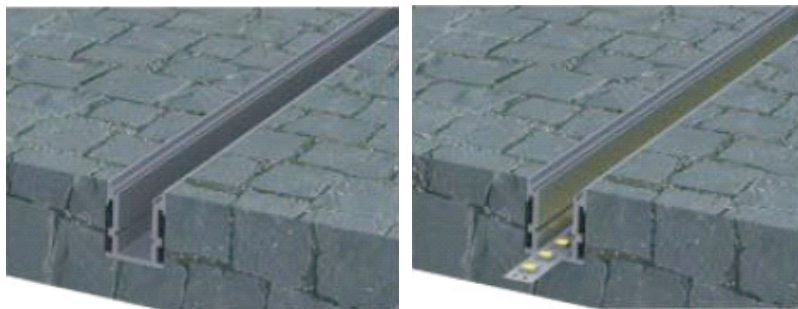
The aluminum profile thickness and damage resistant diffuser allow you to walk over safe.

Dimension: 57*11*2500mm

Diffuser:

PC Opal/ Frosted/ Transparent

Installation



PMMA Extrusion Profile

High pressure bearing, can be bendable and used for curve lighting
Invisible light spot and homogeneous lighting
Side view PMMA profile working with standard led strip
1meter, 2meters, maximum length can be 20meters
IP67, suit for indoor and outdoor applications





PA003

Heavy extrude PMMA one-piece profile
Dimension: 17.5*13.5mm
Length: 1m, 2m and 3meters

Accessories

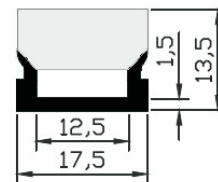
Endcap
Frosted color



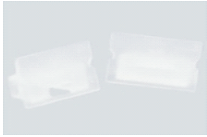
Mounting clip
White color



LED strip
Max. width 12mm
Linear 140 (140leds/
14W/ 1540lm)



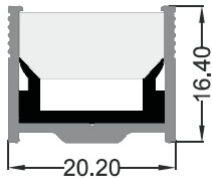
Accessories



Endcap
Frosted color



LED strip
Max. width 12mm
Linear 140 (140leds/
14W/ 1540lm)



PA003AL

One-piece PMMA extrusion profile with Aluminum base
Dimension: 20.2*16.4mm
Length: 1m, 2m and 3meters



PA004

One-piece PMMA extrusion profile
Dimension: 17.5*11.34mm
Length: 1m, 2m and 3meters

Accessories

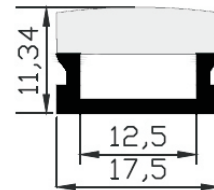
Endcap
Frosted color



Mounting clip
White color



LED strip
Max. width 12mm
Linear 140 (140leds/
14W/ 1540lm)



Accessories



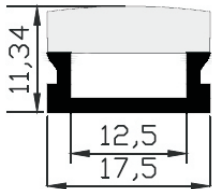
Endcap
Frosted color



Mounting clip
White color



LED strip
Max. width 12mm
Linear 140 (140led/
14w/1540lm)



Bendable



PA004-B

Bendable One-piece PMMA extrusion profile
Dimension: 17.5*13.5mm
Length: 3m,5m, Max.20meters

Bendable&Side view



PA005

Bendable PMMA extrusion profile-Side view
Dimension: 12*22.4mm
Length: 3m,5m, Max.20meters

Accessories

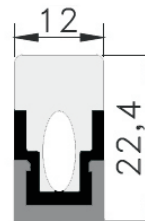
Endcap
Frosted color



Mounting clip
metal



LED strip
Max. width 10mm
Linear 140 (140led/
14w/1540lm)



LED Flexible Strip



SMD2835/ SMD2216

Lower power, higher lumen output, tightly spaced.
Particularly suited to applications requiring homogenous diffusion or LED "dots" free in tight installation environment.

LED Flexible Strip

Model	LED Qty	Voltage	Power	Lumen/m	CRI	Dimension	Min. cut
FL2835-60	60	12/24V	7.2W	650lm	>80	5000*10*2mm	50mm/100mm
FL2835-120	120	12/24V	14W	1250lm	>80	5000*10*2mm	25mm/50mm
FL2835-140	140	24V	14.4W	1540lm	>80	5000*10*2mm	50mm
FL2835-140S	140	24V	10W	1150lm	>80	5000*6*2mm	50mm
FL2835-182	182	24V	15W	1800lm	>80	5000*10*2mm	38.46mm
FL2835-196	196	24V	21W	2520lm	>80	5000*15*2mm	71.43mm
FL2216-240	240	12/24V	19.2W	1360lm	>90	5000*10*2mm	12.5mm/25mm
FL2216-240MX	240	12/24V	19.2W	652+684lm	>90	5000*10*2mm	12.5mm/25mm
FL2216-300	300	12/24V	24W	1628lm	>90	5000*10*2mm	10mm /20mm

Color temperature:
 Warm white: 2700-3000k
 Natural white: 4000-4500k
 Cold white: 5500-6500K

LED Rirgid Strip

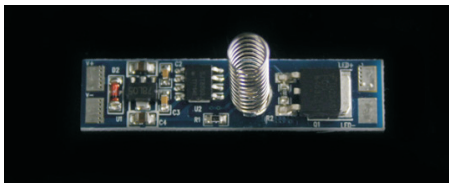


PrevaLED Linear Value series offers innovative solutions for a variety of general lighting applications. Providing seamless longlife, energy-efficient, and economical lighting alternative to linear fluorescent lamp sources.

Model	Power	Lumen	If (mA)	lm/W
LIN-1300-560	9.1W	1220lm	250mA	132lm/w
LIN-2200-560	15.3W	2032lm	500mA	132lm/w

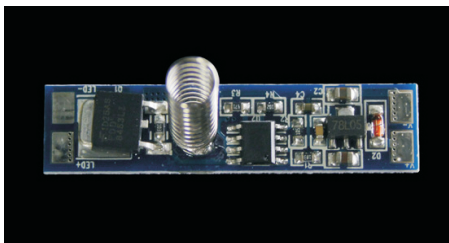
Color temperature:
Warm white : 3000k
Natural white: 4000k
Cold white: 5000K

Sensor Switch for LED Profile



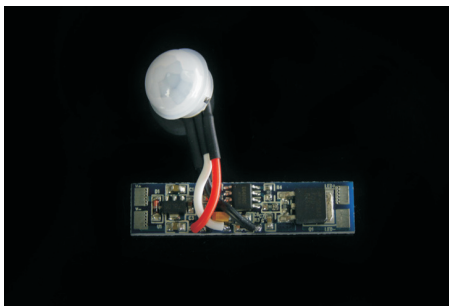
SW-001

Switch on/off dimmer
43mm*10mm
12VDC- 24VDC
Max Current 10



SW-002

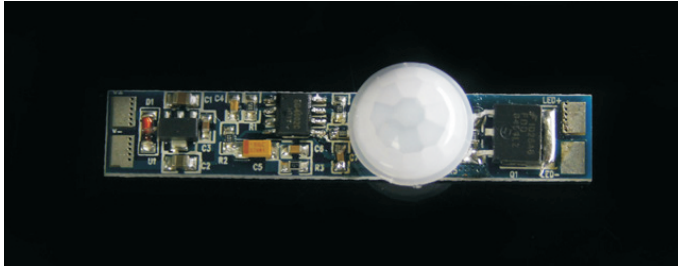
4-Step Touch Dimmer
40mm*10mm.
12VDC- 24VDC
Max Current 10A



PIR-001

PIR Sensor switch
43mm*10mm
12VDC- 24VDC
Max Current 10A.
Detection Range ≤ 2 meters
Delay Time: 40 seconds

Sensor Switch for LED Profile



PIR-002

PIR Sensor switch

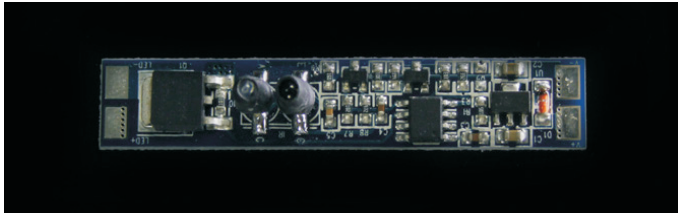
43mm*10mm

12VDC- 24VDC

Max Current 10A.

Detection Range ≤ 2 meters

Delay Time: 40 seconds



IR-001

IR Hand Sensor Switch

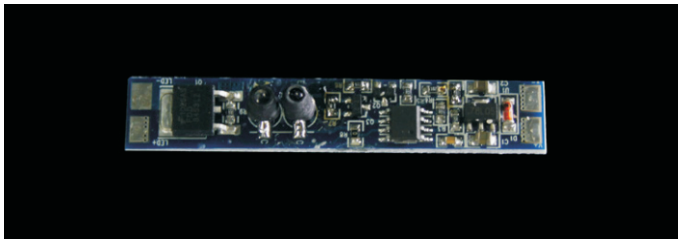
55mm*10mm.

12VDC- 24VDC

Max Current 6A.

Detection Distance ≤ 10 CM

Light turns on/off when moving hands



IR-002

IR Door Sensor Switch

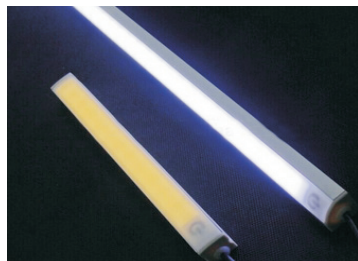
55mm* 10mm.

12VDC- 24VDC

Max Current 6A.

Detection Distance ≤ 10 CM

light turns on/off when open/close the door





Bellaluce Lighting Pty Ltd

128 Carrington St, Revesby 2212, Australia

P| 0430048322

E| sunny@bellalucelighting.com.au

W| www.bellalucelighting.com.au