

BELLALUCE LIGHTING



Bellaluce

2015

Lighting

2015

HELLO!



LED SPECTRUM & FLUX MEASUREMENT SYSTEMS
The measurable LED modules parameters: relative spectral power distribution, spectral purity, color temperature, luminous flux, voltage, current, power, power factor etc.



G02000 GONIOPHOTOMETER is Highly automated test system for luminous intensity measurement. It is mainly used for luminous intensity measurement and lumen test for various interior light, exterior light.



Test Chamber of high temperature/high-temperature box This equipment is mainly test the function of the lamp under .40 ° c - 1 so ° c environment.



Flush strong test device get wet in the rain/IPX5, IPX6 waterproof equipment



Test-tube installation rain before/IPX3, IPX4 waterproof equipment



INTERIOR / EXTERIOR

Track System

001-006

Ceiling Surface

007-036

Ceiling Recessed

037-090

Wall Surface

091-109

Track System



BL- TRACK CIRCULAR
P001



BL- TRACK ADJUST
P003



BL- TRACK CLASSY
P004

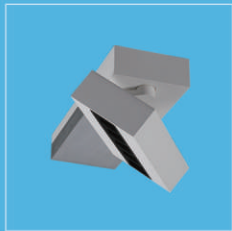


BL- TRACK EXT
P005

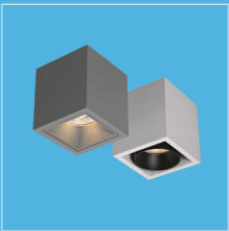


BL- TRACK BIG B
P006

Ceiling Surface



BL- CADE
P009



BL- CADEN
P011



BL- CADMAEL
P013



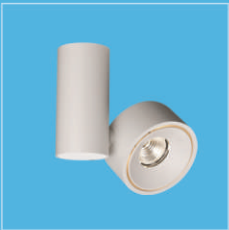
BL- CADOC
P015



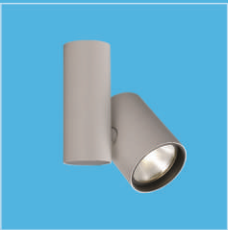
BL- CAEL
P017



BL- CAELAN
P019



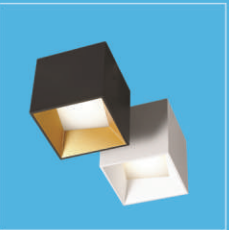
BL- AESOP
P021



BL- AGATA
P022



BL- AGDA
P023



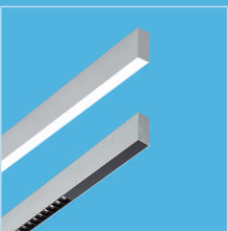
BL- GABBY
P027



BL- GABE
P028

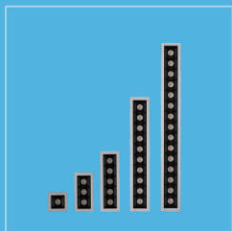


BL- GAEL
P029



BL- JAAKKO
P033

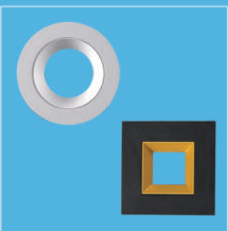
Ceiling Recessed



BL- GABE
P037



BL- JABEZ
P041



BL- JABIR
P045



BL- JAC
P049

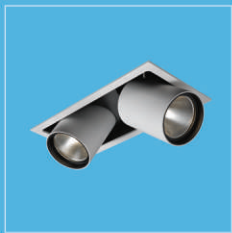


BL- JAGGAR
P051

Ceiling Recessed



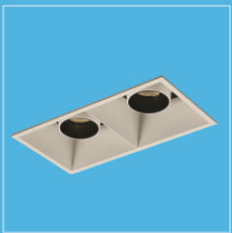
BL-JAGNA
P053



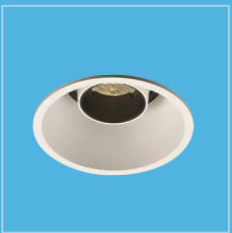
BL-JAHAN
P061



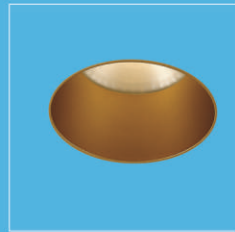
BL-JAI
P067



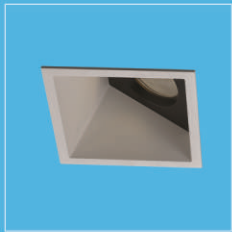
BL-LACEY
P069



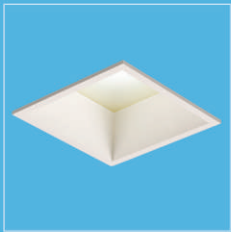
BL-LADY
P073



BL-LAEL
P077



BL-LAGINA
P078



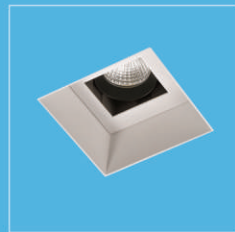
BL-OAKLEY
P079



BL-OBASI
P083



BL-OBERON
P084



BL-OCEAN
P085

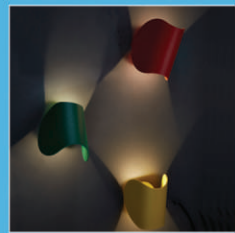


BL-OCTAVIAN
P088



BL-OASIS
P089

Wall Surface



BL-QADIR
P091



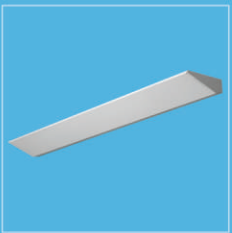
BL-QAMAR
P093



BL-QI
P095



BL-QIANA
P096



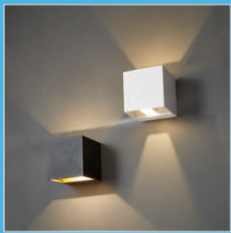
BL-QING
P097



BL-QIU
P099



BL-QUAN
P100



BL-QUEST
P101



BL-QUEEN
P103



BL-QUILL
P105

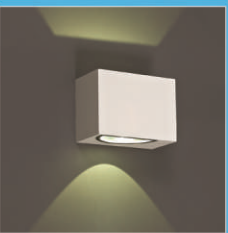
Wall Surface



BL-QUY
P107



BL-QUYEN
P108



BL-QUSAY
P109



TRACK SYSTEM

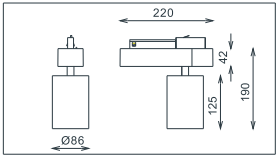


TRACK SYSTEM

BL- TRACK CIRCULAR-23 W LED 1x23.4W



MATERIAL:ALUMINUM DIE-CAST
ROTATES:350°
SPOT HEAD ADJUST: 90°
LAMP:VERO 13 1x23.4W/700mA,
2540lm/CRI80/3000K,1969lm/CRI90/3000K,
INCL..LED POWER SUPPLY 700mA-DC
AC 100-240V/50-60Hz
REFLECTOR ANGLE:16°、34°、50°.CRI 80/90.



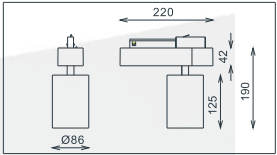
AVAILABLE COLOR:
WHI/GLD
WHI/BLK
BLK/GLD
SLV GRY/BLK

IP20/ROHS/CE/Ⓢ

BL- TRACK CIRCULAR LED 1x33.3W



MATERIAL:ALUMINUM DIE-CAST
ROTATES:350°
SPOT HEAD ADJUST: 90°
LAMP:V15 Array 1x33.3W/900mA,
3550lm/CRI80/3000K,2793lm/CRI90/3000K,
INCL..LED POWER SUPPLY 900mA-DC
AC 100-240V/50-60Hz
REFLECTOR ANGLE:19°、31°、43°.CRI 80/90.



AVAILABLE COLOR:
WHI/GLD
WHI/BLK
BLK/GLD
SLV GRY/BLK

IP20/ROHS/CE/Ⓢ





BL- TRACK ADJUST-9W LED 1x9.2W

MATERIAL:ALUMINUM DIE-CAST
ROTATES:350°
SPOT HEAD ADJUST: 90°

LAMP:V8 ARRAY 1x9.2W/500mA,
945lm/CRI80/3000K,739lm/CRI90/3000K,
INCL. LED POWER SUPPLY 500mA-DC
AC 100-240V/50-60Hz
REFLECTOR ANGLE:15°, 33°, 48°.CRI 80/90.

AVAILABLE COLOR:
WHI
BLK
SLV GRY
WHI/BLK
SLV GRY/BLK

IP20/ROHS/CE/







BL- TRACK CLASSY-14W LED 1x13.7W

MATERIAL:ALUMINUM DIE-CAST
ROTATES:350°
SPOT HEAD ADJUST: 90°

LAMP:VERO 10 1x13.7W/500mA,1354lm/CRI80/3000K,
1074lm/CRI90/3000K,890lm/CRI97/3000K,
INCL. LED POWER SUPPLY 500mA-DC
AC 100-240V/50-60Hz
REFLECTOR ANGLE:20°, 28°, 40°.CRI 80/90/97

AVAILABLE COLOR:
WHI
BLK
SLV GRY
GRY

IP20/ROHS/CE/





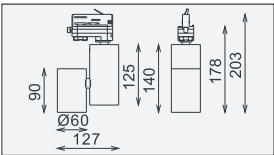


BL- DOUBLE H125-9W LED 1x9.2W



MATERIAL:ALUMINUM DIE-CAST
ROTATES:350°
SPOT HEAD ADJUST: 90°

LAMP:V8 ARRAY 1x9.2W/500mA,
945lm/CRI80/3000K,739lm/CRI90/3000K,
INCL..LED POWER SUPPLY 500mA-DC
AC 100-240V/50-60Hz
REFLECTOR ANGLE:15°, 33°, 48°.CRI 80/90.



AVAILABLE COLOR:
WHI/GLD
WHI/BLK
BLK/GLD
SLV GRY/BLK

IP20/ROHS/CE/⊕

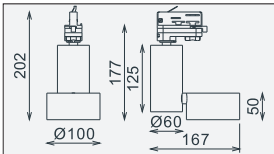


BL- TRACK EXT-14W LED 1x13.7W



MATERIAL:ALUMINUM DIE-CAST
ROTATES:350°
SPOT HEAD ADJUST: 90°

LAMP:VERO 10 1x13.7W/500mA,1354lm/CRI80/3000K,
1074lm/CRI90/3000K,890lm/CRI97/3000K,
INCL..LED POWER SUPPLY 500mA-DC
AC 100-240V/50-60Hz
REFLECTOR ANGLE:20°, 28°, 40°.CRI 80/90/97



AVAILABLE COLOR:
WHI
BLK
SLV GRY
WHI/BLK
SLV GRY/BLK

IP20/ROHS/CE/⊕

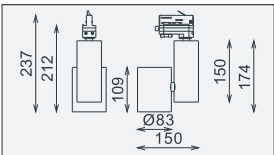


BL- TRACK BIG B-23W LED 1x23.4W



MATERIAL:ALUMINUM DIE-CAST
ROTATES:350°
SPOT HEAD ADJUST: 90°

LAMP:VERO 13 1x23.4W/700mA,
2540lm/CRI80/3000K,1969lm/CRI90/3000K,
INCL..LED POWER SUPPLY 700mA-DC
AC 100-240V/50-60Hz
REFLECTOR ANGLE:16°, 34°, 50°.CRI 80/90.



AVAILABLE COLOR:
WHI/GLD
WHI/BLK
BLK/GLD
SLV GRY/BLK

IP20/ROHS/CE/⊕

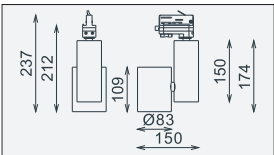


BL- TRACK BIG B-33W LED 1x33.3W



MATERIAL:ALUMINUM DIE-CAST
ROTATES:350°
SPOT HEAD ADJUST: 90°

LAMP:V15 Array 1x33.3W/900mA,
3550lm/CRI80/3000K,2793lm/CRI90/3000K,
INCL..LED POWER SUPPLY 900mA-DC
AC 100-240V/50-60Hz
REFLECTOR ANGLE:19°, 31°, 43°.CRI 80/90.



AVAILABLE COLOR:
WHI/GLD
WHI/BLK
BLK/GLD
SLV GRY/BLK

IP20/ROHS/CE/⊕



BL- CADE

BL-CADE is applied with specially designed slender optic reflector, with two beam angles 32° or 46° for options, the overall light shows a circular lighting effect, what's more the light is clean and uniform, it is laudable!

Professionally designed antiglare front ring, very low UGR can be achieved, maximum reduced the uncomfortable feeling by glare on human eyes, offers a high comfort to entire lighting environment.

Compact and flexible hinge design, makes the luminaire owns a high flexibility of 350/90° adjustment on its lamp head, you can use it no matter for accent lighting on ceiling or decorative lighting on wall, everything is possible!

Quick-change of the decorative frame, which greatly enriched the color matching of the product, getting a new product style by changing the product color just in a flash!

BL-CADE series has standard recessed mounting, rimless hide mounting, and surface mounting, various versions.

High standard LED comes from OSRAM company, which has high lighting output (lm/W) and high CRI.



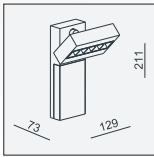
BL- CADE 10W LED 5x2W



MATERIAL:ALU DIE-CAST+ ALU+PC
ADJUSTABLE ANGLE:0~90°/355°

LAMP:OSLON Square EC 5X2W/ 700mA,
1120lm/CRI80,870lm/CRI90.
INCL. LED POWER SUPPLY 700mA-DC
AC 100-240V/50-60Hz
REFLECTOR ANGLE:32°、46°.CRI 80/90.

AVAILABLE COLOR:
BLK/GLD BLK WHI/BLK WHI/ALU WHI/GLD
IP20/ROHS/CE/▽



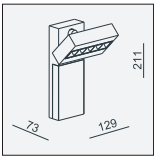
BL- CADE DIM LED 5x2W



MATERIAL:ALU DIE-CAST+ ALU+PC
ADJUSTABLE ANGLE:0~90°/355°

LAMP:OSLON Square EC 5X2W/ 700mA,
1120lm/CRI80,870lm/CRI90.
INCL. LED POWER SUPPLY 700mA-DC TRIAC DIM
AC 100-240V/50-60Hz
REFLECTOR ANGLE:32°、46°.CRI 80/90.

AVAILABLE COLOR:
BLK/GLD BLK WHI/BLK WHI/ALU WHI/GLD
IP20/ROHS/CE/▽



BL- CADE RECESSED LED 5x2W

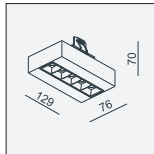


MATERIAL:ALU DIE-CAST+ ALU+PC
ADJUSTABLE ANGLE:0~90°/355°

LAMP:OSLON Square EC 5X2W/700mA, ◆
1120lm/CRI80,870lm/CRI90
REFLECTOR ANGLE:32°、46°.CRI 80/90.

AVAILABLE COLOR:
Sand White
Sand Black
IP20/ROHS/CE/▽

Ø48xH70



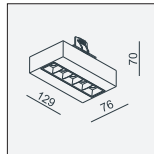
BL- CADE HIDE LED 5x2W



MATERIAL:ALU DIE-CAST+ ALU+PC
ADJUSTABLE ANGLE:0~90°/355°

LAMP:OSLON Square EC 5X2W/700mA, ◆
1120lm/CRI80,870lm/CRI90
REFLECTOR ANGLE:32°、46°.CRI 80/90.
INCL. MOUNTING KIT 18

AVAILABLE COLOR:
Sand White
Sand Black
IP20/ROHS/CE/▽
KIT 18 H70



WHI/ALU



WHI/BLK



BLK



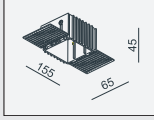
BLK/GLD



WHI/GLD

MOUNTING KIT 18
MATERIAL:ALUMINUM

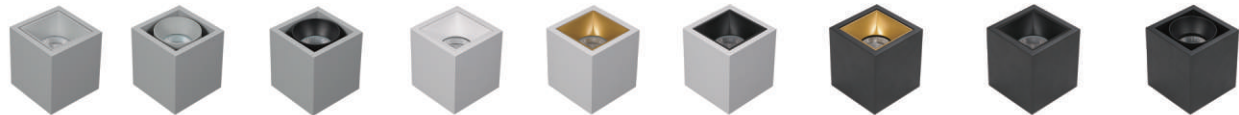
68x68





BL- CADEN

BL-CADEN is a compact size and minimal exposed ceiling light, customers are able to purchase different front rings to combine into appearances of different styles. Meanwhile, Course series also provide accessories of IP65 for outdoor use, just need to change the accessories easily, the luminaire can become a high protection outdoor light!



BL- CADEN RISE LED 1x6.2W

MATERIAL:ALU DIE-CAST
LAMP:V8 ARRAY 1x6.2W/350mA,
703lm/CRI80/3000K,550lm/CRI90/3000K,
INCL. LED POWER SUPPLY 350mA-DC
AC 100-240V/50-60Hz
REFLECTOR ANGLE:15°, 33°, 48°.CRI 80/90.

AVAILABLE COLOR:
Sand White Sand White/Black
Sand Black Sand Black/Gold
Sand Grey Sand Grey/Black

IP40/ROHS/CE/

BL- CADEN RISE LED 1x9.3W

MATERIAL:ALU DIE-CAST
V8 ARRAY 1x9.3W/500mA,
945lm/CRI80/3000K,739lm/CRI90/3000K,
INCL. LED POWER SUPPLY 500mA-DC
AC 100-240V/50-60Hz
REFLECTOR ANGLE:15°, 33°, 48°.CRI 80/90.

AVAILABLE COLOR:
Sand White Sand White/Black
Sand Black Sand Black/Gold
Sand Grey Sand Grey/Black

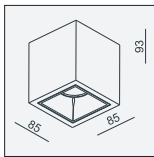
IP40/ROHS/CE/

BL- CADEN RISE DIM LED 1x9.3W

MATERIAL:ALU DIE-CAST
V8 ARRAY 1x9.3W/500mA,
945lm/CRI80/3000K,739lm/CRI90/3000K,
INCL. LED POWER SUPPLY 500mA-DC
TRIAC DIM
AC 100-240V/50-60Hz
REFLECTOR ANGLE:15°, 33°, 48°.CRI 80/90.

AVAILABLE COLOR:
Sand White Sand White/Black
Sand Black Sand Black/Gold
Sand Grey Sand Grey/Black

IP40/ROHS/CE/



BL- CADEN COURSE LED 1x6.2W

MATERIAL:ALU DIE-CAST+GLASS
LAMP:V8 ARRAY 1x6.2W/350mA,
703lm/CRI80/3000K,550lm/CRI90/3000K,
INCL. LED POWER SUPPLY 350mA-DC
AC 100-240V/50-60Hz
REFLECTOR ANGLE:15°, 33°, 48°.CRI 80/90.

AVAILABLE COLOR:
Sand White Sand White/Black
Sand Black Sand Black/Gold
Sand Grey Sand Grey/Black

IP43/ROHS/CE/

BL- CADEN LED 1x9.3W

MATERIAL:ALU DIE-CAST+GLASS
V8 ARRAY 1x9.3W/500mA,
945lm/CRI80/3000K,739lm/CRI90/3000K,
INCL. LED POWER SUPPLY 500mA-DC
AC 100-240V/50-60Hz
REFLECTOR ANGLE:15°, 33°, 48°.CRI 80/90.

AVAILABLE COLOR:
Sand White Sand White/Black
Sand Black Sand Black/Gold
Sand Grey Sand Grey/Black

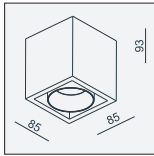
IP43/ROHS/CE/

BL- CADEN DIM LED 1x9.3W

MATERIAL:ALU DIE-CAST+GLASS
V8 ARRAY 1x9.3W/500mA,
945lm/CRI80/3000K,739lm/CRI90/3000K,
INCL. LED POWER SUPPLY 500mA-DC
TRIAC DIM
AC 100-240V/50-60Hz
REFLECTOR ANGLE:15°, 33°, 48°.CRI 80/90.

AVAILABLE COLOR:
Sand White Sand White/Black
Sand Black Sand Black/Gold
Sand Grey Sand Grey/Black

IP43/ROHS/CE/



BL- CADEN OUT-6W LED 1x6.2W

MATERIAL:ALU DIE-CAST+GLASS
LAMP:V8 ARRAY 1x6.2W/350mA,
703lm/CRI80/3000K,550lm/CRI90/3000K,
INCL. LED POWER SUPPLY 350mA-DC
AC 100-240V/50-60Hz
REFLECTOR ANGLE:15°, 33°, 48°.CRI 80/90.

AVAILABLE COLOR:
Sand White Sand White/Black
Sand Black Sand Black/Gold
Sand Grey Sand Grey/Black

IP65/ROHS/CE/

BL-CADEN OUT LED 1x9.3W

MATERIAL:ALU DIE-CAST+GLASS
V8 ARRAY 1x9.3W/500mA,
945lm/CRI80/3000K,739lm/CRI90/3000K,
INCL. LED POWER SUPPLY 500mA-DC
AC 100-240V/50-60Hz
REFLECTOR ANGLE:15°, 33°, 48°.CRI 80/90.

AVAILABLE COLOR:
Sand White Sand White/Black
Sand Black Sand Black/Gold
Sand Grey Sand Grey/Black

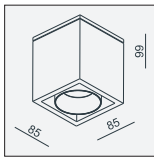
IP65/ROHS/CE/

BL-CADEN OUT DIM LED 1x9.3W

MATERIAL:ALU DIE-CAST+GLASS
V8 ARRAY 1x9.3W/500mA,
945lm/CRI80/3000K,739lm/CRI90/3000K,
INCL. LED POWER SUPPLY 500mA-DC
TRIAC DIM
AC 100-240V/50-60Hz
REFLECTOR ANGLE:15°, 33°, 48°.CRI 80/90.

AVAILABLE COLOR:
Sand White Sand White/Black
Sand Black Sand Black/Gold
Sand Grey Sand Grey/Black

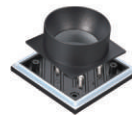
IP65/ROHS/CE/



Front Ring for COURSE (IP43)



Front Ring for RISE



IP65 Front Ring & Wall Plate for COURSE



Lamp(IP40)



BL- CADMAEL

BL- CADMAEL LED 1x9.3W

MATERIAL:ALU DIE-CAST+ ALU
ADJUSTABLE ANGLE:0~90°/355°

LAMP:V8 ARRAY 1x9.3W/500mA,
945lm/CRI80/3000K, 739lm/CRI90/3000K,
INCL. LED POWER SUPPLY 500mA-DC
AC 100-240V/50-60Hz, \oplus
REFLECTOR ANGLE:15°, 33°, 48°.CRI 80/90.

AVAILABLE COLOR:
Sand White/Black
Sand Black
Sand Black/Gold

IP20/ROHS/CE/

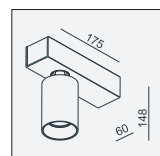
BL- CADMAEL DIM LED 1x9.3W

MATERIAL:ALU DIE-CAST+ ALU
ADJUSTABLE ANGLE:0~90°/355°

LAMP:V8 ARRAY 1x9.3W/500mA,
945lm/CRI80/3000K, 739lm/CRI90/3000K,
INCL. LED POWER SUPPLY 500mA-DC
TRIAC DIM
AC 100-240V/50-60Hz, \oplus
REFLECTOR ANGLE:15°, 33°, 48°.CRI 80/90.

AVAILABLE COLOR:
Sand White/Black
Sand Black
Sand Black/Gold

IP20/ROHS/CE/



BL- CADMAEL 2 LED 2x9.3W

MATERIAL:ALU DIE-CAST+ ALU
ADJUSTABLE ANGLE:0~90°/355°

LAMP:V8 ARRAY 2x9.3W/500mA,
2x945lm/CRI80/3000K, 2x739lm/CRI90/3000K,
INCL. LED POWER SUPPLY 500mA-DC
AC 100-240V/50-60Hz, \oplus
REFLECTOR ANGLE:15°, 33°, 48°.CRI 80/90.

AVAILABLE COLOR:
Sand White/Black
Sand Black
Sand Black/Gold

IP20/ROHS/CE/

BL- CADMAEL 3 LED 3x9.3W

MATERIAL:ALU DIE-CAST+ ALU
ADJUSTABLE ANGLE:0~90°/355°

LAMP:V8 ARRAY 3x9.3W/500mA,
3x945lm/CRI80/3000K, 3x739lm/CRI90/3000K,
INCL. LED POWER SUPPLY 500mA-DC
AC 100-240V/50-60Hz, \oplus
REFLECTOR ANGLE:15°, 33°, 48°.CRI 80/90.

AVAILABLE COLOR:
Sand White/Black
Sand Black
Sand Black/Gold

IP20/ROHS/CE/

BL- CADMAEL E2 LED 2x9.3W

MATERIAL:ALU DIE-CAST+ ALU
ADJUSTABLE ANGLE:0~90°/355°

LAMP:V8 ARRAY 2x9.3W/500mA,
2x945lm/CRI80/3000K, 2x739lm/CRI90/3000K,
INCL. LED POWER SUPPLY 500mA-DC
AC 100-240V/50-60Hz, \oplus
REFLECTOR ANGLE:15°, 33°, 48°.CRI 80/90.

AVAILABLE COLOR:
Sand White/Black
Sand Black
Sand Black/Gold

IP20/ROHS/CE/

BL- CADMAEL E3 LED 3x9.3W

MATERIAL:ALU DIE-CAST+ ALU
ADJUSTABLE ANGLE:0~90°/355°

LAMP:V8 ARRAY 3x9.3W/500mA,
3x945lm/CRI80/3000K, 3x739lm/CRI90/3000K,
INCL. LED POWER SUPPLY 500mA-DC
AC 100-240V/50-60Hz, \oplus
REFLECTOR ANGLE:15°, 33°, 48°.CRI 80/90.

AVAILABLE COLOR:
Sand White/Black
Sand Black
Sand Black/Gold

IP20/ROHS/CE/

BL- CADMAEL 2 DIM LED 2x9.3W

MATERIAL:ALU DIE-CAST+ ALU
ADJUSTABLE ANGLE:0~90°/355°

LAMP:V8 ARRAY 2x9.3W/500mA,
2x945lm/CRI80/3000K, 2x739lm/CRI90/3000K,
INCL. LED POWER SUPPLY 500mA-DC
TRIAC DIM
AC 100-240V/50-60Hz, \oplus
REFLECTOR ANGLE:15°, 33°, 48°.CRI 80/90.

AVAILABLE COLOR:
Sand White/Black
Sand Black
Sand Black/Gold

IP20/ROHS/CE/

BL- CADMAEL 3 DIM LED 3x9.3W

MATERIAL:ALU DIE-CAST+ ALU
ADJUSTABLE ANGLE:0~90°/355°

LAMP:V8 ARRAY 3x9.3W/500mA,
3x945lm/CRI80/3000K, 3x739lm/CRI90/3000K,
INCL. LED POWER SUPPLY 500mA-DC
TRIAC DIM
AC 100-240V/50-60Hz, \oplus
REFLECTOR ANGLE:15°, 33°, 48°.CRI 80/90.

AVAILABLE COLOR:
Sand White/Black
Sand Black
Sand Black/Gold

IP20/ROHS/CE/

BL- CADMAEL E2 DIM LED 2x9.3W

MATERIAL:ALU DIE-CAST+ ALU
ADJUSTABLE ANGLE:0~90°/355°

LAMP:V8 ARRAY 2x9.3W/500mA,
2x945lm/CRI80/3000K, 2x739lm/CRI90/3000K,
INCL. LED POWER SUPPLY 500mA-DC
TRIAC DIM
AC 100-240V/50-60Hz, \oplus
REFLECTOR ANGLE:15°, 33°, 48°.CRI 80/90.

AVAILABLE COLOR:
Sand White/Black
Sand Black
Sand Black/Gold

IP20/ROHS/CE/

BL- CADMAEL E3 DIM LED 3x9.3W

MATERIAL:ALU DIE-CAST+ ALU
ADJUSTABLE ANGLE:0~90°/355°

LAMP:V8 ARRAY 3x9.3W/500mA,
3x945lm/CRI80/3000K, 3x739lm/CRI90/3000K,
INCL. LED POWER SUPPLY 500mA-DC
TRIAC DIM
AC 100-240V/50-60Hz, \oplus
REFLECTOR ANGLE:15°, 33°, 48°.CRI 80/90.

AVAILABLE COLOR:
Sand White/Black
Sand Black
Sand Black/Gold

IP20/ROHS/CE/



BL-CADOC

BL-CADOC was born like an "all-rounder",owning a flexible lamp head of 350/90° rotation/adjustment, which gives it a multifunctional character can be used no matter on the ceiling or on the wall. Meanwhile, its unique appearance of decorative "HALO" also makes it very characteristic, and very attractive!

To perfect this series, now we have developed the new mini size, it has 6W-9W outputs for options, with a compact dimension of 75mm. Together with the original 9W-14W/100mm version, they have become a completed series of luminaire!

BL- CADOC MINI LED 1x6.2W



MATERIAL:ALUMINUM DIE-CAST
ROTATES:350°
SPOT HEAD ADJUST: 90°

LAMP:V8 ARRAY 1x6.2W/350mA,
703lm/CRI80/3000K,550lm/CRI90/3000K,
INCL. LED POWER SUPPLY 350mA-DC
AC 100-240V/50-60Hz
REFLECTOR ANGLE:23°, 34°, 50°.CRI 80/90.

AVAILABLE COLOR:
Sand White/Black
Sand Black

IP20/ROHS/CE/



BL- CADOC MINI-9W LED 1x9.3W



MATERIAL:ALUMINUM DIE-CAST
ROTATES:350°
SPOT HEAD ADJUST: 90°

LAMP:V8 ARRAY 1x9.3W/500mA,
945lm/CRI80/3000K,739lm/CRI90/3000K,
INCL. LED POWER SUPPLY 500mA-DC
AC 100-240V/50-60Hz
REFLECTOR ANGLE:23°, 34°, 50°.CRI 80/90.

AVAILABLE COLOR:
Sand White/Black
Sand Black

IP20/ROHS/CE/

BL- CADOC MINI-9W DIM LED 1x9.3W

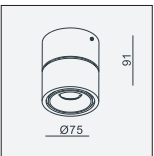


MATERIAL:ALUMINUM DIE-CAST
ROTATES:350°
SPOT HEAD ADJUST: 90°

LAMP:V8 ARRAY 1x9.3W/500mA,
945lm/CRI80/3000K,739lm/CRI90/3000K,
INCL. LED POWER SUPPLY 500mA-DC
TRIAC DIM
AC 100-240V/50-60Hz
REFLECTOR ANGLE:23°, 34°, 50°.CRI 80/90.

AVAILABLE COLOR:
Sand White/Black
Sand Black

IP20/ROHS/CE/



BL- CADOC LED 1x9.3W



MATERIAL:ALUMINUM DIE-CAST
ROTATES:350°
SPOT HEAD ADJUST: 90°

LAMP:V8 ARRAY 1x9.3W/500mA,
945lm/CRI80/3000K,739lm/CRI90/3000K,
INCL. LED POWER SUPPLY 500mA-DC
AC 100-240V/50-60Hz
REFLECTOR ANGLE:15°, 33°, 48°.CRI 80/90.

AVAILABLE COLOR:
Sand White/Black
Sand Black

IP20/ROHS/CE/

BL- CADOC DIM LED 1x9.3W

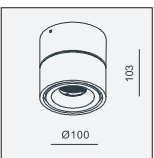


MATERIAL:ALUMINUM DIE-CAST
ROTATES:350°
SPOT HEAD ADJUST: 90°

LAMP:V8 ARRAY 1x9.3W/500mA,
945lm/CRI80/3000K,739lm/CRI90/3000K,
INCL. LED POWER SUPPLY 500mA-DC
TRIAC DIM
AC 100-240V/50-60Hz
REFLECTOR ANGLE:15°, 33°, 48°.CRI 80/90.

AVAILABLE COLOR:
Sand White/Black
Sand Black

IP20/ROHS/CE/



BL- CADOC-14W LED 1x13.8W



MATERIAL:ALUMINUM DIE-CAST
ROTATES:350°
SPOT HEAD ADJUST: 90°

LAMP:BRIDGELUX V10 Array 1x13.8W
1474lm/3000K/CRI 80 1167lm/3000K/CRI 90
INCL. LED POWER SUPPLY 500mA-DC
AC 100-240V/50-60Hz
REFLECTOR ANGLE:22°, 37°, 50°.CRI 80/90.

AVAILABLE COLOR:
Sand White/Black
Sand Black

IP20/ROHS/CE/

BL- CADOC-14W DIM LED 1x13.8W

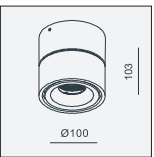


MATERIAL:ALUMINUM DIE-CAST
ROTATES:350°
SPOT HEAD ADJUST: 90°

LAMP:BRIDGELUX V10 Array 1x13.8W
1474lm/3000K/CRI 80 1167lm/3000K/CRI 90
INCL. LED POWER SUPPLY 500mA-DC
TRIAC DIM
AC 100-240V/50-60Hz
REFLECTOR ANGLE:22°, 37°, 50°.CRI 80/90.

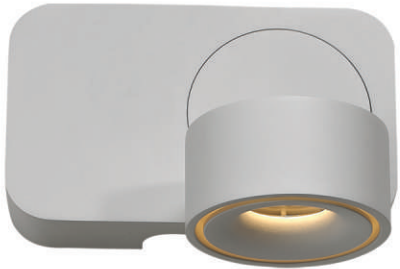
AVAILABLE COLOR:
Sand White/Black
Sand Black

IP20/ROHS/CE/





BL-CAEL



BL- CAEL-9W LED 1x9.3W



MATERIAL:ALUMINUM DIE-CAST
ROTATES:350°
SPOT HEAD ADJUST: 90°

LAMP:V8 ARRAY 1x9.3W/500mA,
945lm/CRI80/3000K,739lm/CRI90/3000K,
INCL. LED POWER SUPPLY 500mA-DC
AC 100-240V/50-60Hz
REFLECTOR ANGLE:15°, 33°, 48°.CRI 80/90.

AVAILABLE COLOR:
Sand White
Sand Black

IP20/ROHS/CE/

BL- CAEL-9W DIM LED 1x9.3W

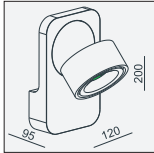


MATERIAL:ALUMINUM DIE-CAST
ROTATES:350°
SPOT HEAD ADJUST: 90°

LAMP:V8 ARRAY 1x9.3W/500mA,
945lm/CRI80/3000K,739lm/CRI90/3000K,
INCL. LED POWER SUPPLY 500mA-DC
TRIAC DIM
AC 100-240V/50-60Hz
REFLECTOR ANGLE:15°, 33°, 48°.CRI 80/90.

AVAILABLE COLOR:
Sand White
Sand Black

IP20/ROHS/CE/



BL- CAEL-14W LED 1x13.8W



MATERIAL:ALUMINUM DIE-CAST
ROTATES:350°
SPOT HEAD ADJUST: 90°

LAMP:BRIDGELUX V10 Array 1x13.8W
1474lm/3000K/CRI 80 1167lm/3000K/CRI 90
INCL. LED POWER SUPPLY 500mA-DC
AC 100-240V/50-60Hz
REFLECTOR ANGLE:22°, 37°, 50°.CRI 80/90.

AVAILABLE COLOR:
Sand White
Sand Black

IP20/ROHS/CE/

BL- CAEL-14W DIM LED 1x13.8W

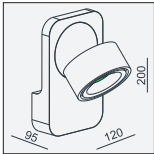


MATERIAL:ALUMINUM DIE-CAST
ROTATES:350°
SPOT HEAD ADJUST: 90°

LAMP:BRIDGELUX V10 Array 1x13.8W
1474lm/3000K/CRI 80 1167lm/3000K/CRI 90
INCL. LED POWER SUPPLY 500mA-DC
TRIAC DIM
AC 100-240V/50-60Hz
REFLECTOR ANGLE:22°, 37°, 50°.CRI 80/90.

AVAILABLE COLOR:
Sand White
Sand Black

IP20/ROHS/CE/





BL-CAELAN

BL-CAELAN owns two strong advantages, efficient & economic.

Professional optic lens designed for mid-power SMD led of Lumileds company, provides a variety of lighting solutions for customers, there are Z30(30°), Z60(60°) and Z90(90°) lens for options which can be applied for vast lighting occasions, offers a uniform and low glare light distribution in advanced low bay environments with >90% efficiency.

While ZT25 (Asymmetric) lens is specially for industries halls or store environments which with products on shelves on both sides of the aisle. Provides uniform double sided oval beam with some intensity in the aisle center as well. (For specific assembly distance between lamps or photometric data pls feel free to consult us.)

BL- CAELAN LED 33x1.07W

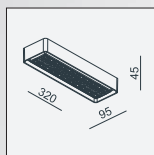


MATERIAL:ALU DIE-CAST

LAMP:LUXEON 3030 2D 33X1.07W, 500mA, 3700lm/3000K/CRI80,4400lm/4000K/CRI80, 3920lm/5000.5700.6500K/CRI80, INCL. LED POWER SUPPLY 500mA-DC AC 100-240V/50-60Hz. LENS ANGLE:30°, 60°, 90°, ZT25(Asymmetric).

AVAILABLE COLOR:
Sand White
Sand Black
Sand Grey

IP20/ROHS/CE/



BL- CAELAN DIM LED 33x1.07W

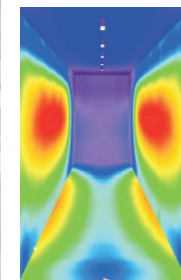
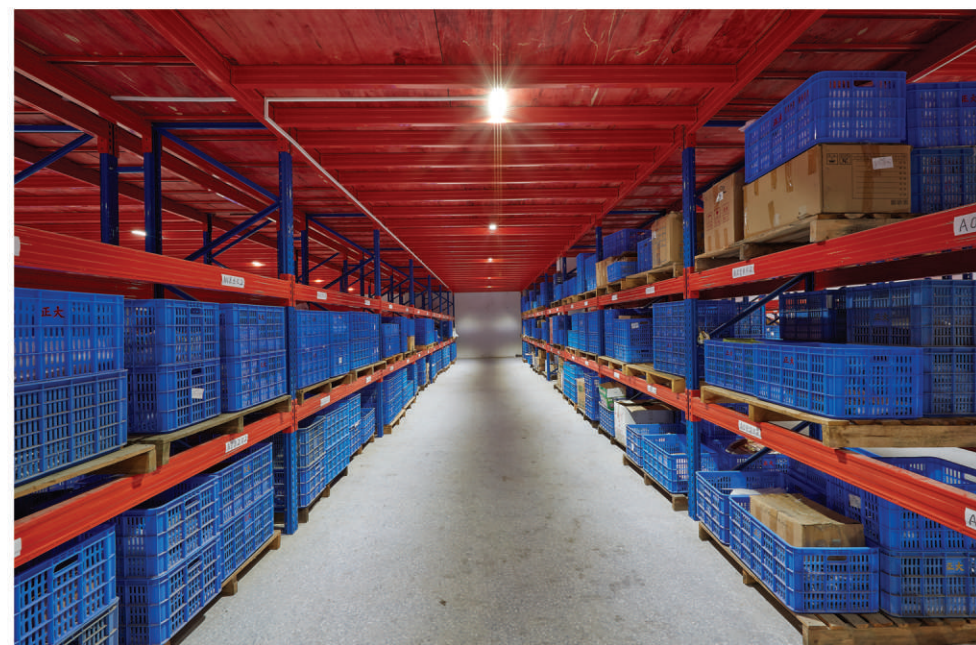
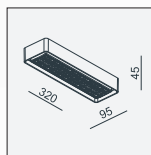


MATERIAL:ALU DIE-CAST

LAMP:LUXEON 3030 2D 33X1.07W, 500mA, 3700lm/3000K/CRI80,4400lm/4000K/CRI80, 3920lm/5000.5700.6500K/CRI80, INCL. LED POWER SUPPLY 500mA-DC TRIAC DIM AC 100-240V/50-60Hz. LENS ANGLE:30°, 60°, 90°, ZT25(Asymmetric).

AVAILABLE COLOR:
Sand White
Sand Black
Sand Grey

IP20/ROHS/CE/



ZT25(Asymmetric)

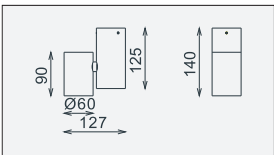


TWINS MINI H125 ED-9W LED 1x9.3W



MATERIAL:ALUMINUM DIE-CAST
ROTATES:350°
SPOT HEAD ADJUST: 90°

LAMP:V8 ARRAY 1x9.3W/500mA,
945lm/CRI80/3000K,739lm/CRI90/3000K,
INCL. LED POWER SUPPLY 500mA-DC
AC 100-240V/50-60Hz
REFLECTOR ANGLE:15°, 33°, 48°.CRI 80/90.



AVAILABLE COLOR:
WHI/GLD
WHI/BLK
BLK/GLD
SLV GRY/BLK

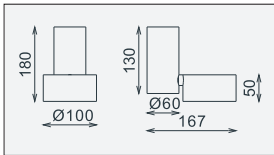
IP20/ROHS/CE/

BL- AESOP-14W LED 1x13.7W



MATERIAL:ALUMINUM DIE-CAST
ROTATES:350°
SPOT HEAD ADJUST: 90°

LAMP:VERO 10 1x13.7W/500mA,1354lm/CRI80/3000K,
1074lm/CRI90/3000K,890lm/CRI97/3000K,
INCL. LED POWER SUPPLY 500mA-DC
AC 100-240V/50-60Hz
REFLECTOR ANGLE:20°, 28°, 40°.CRI 80/90/97



AVAILABLE COLOR:
WHI
BLK
SLV GRY
WHI/BLK
SLV GRY/BLK

IP20/ROHS/CE/

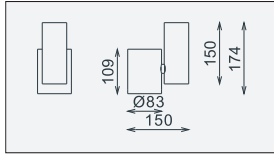


BL- AGATA-23W LED 1x23.4W



MATERIAL:ALUMINUM DIE-CAST
ROTATES:350°
SPOT HEAD ADJUST: 90°

LAMP:VERO 13 1x23.4W/700mA,
2540lm/CRI80/3000K,1969lm/CRI90/3000K,
INCL. LED POWER SUPPLY 700mA-DC
AC 100-240V/50-60Hz
REFLECTOR ANGLE:16°, 34°, 50°.CRI 80/90.



AVAILABLE COLOR:
WHI/GLD
WHI/BLK
BLK/GLD
SLV GRY/BLK

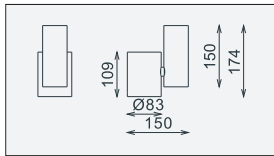
IP20/ROHS/CE/

BL- AGATA-33W LED 1x33.3W



MATERIAL:ALUMINUM DIE-CAST
ROTATES:350°
SPOT HEAD ADJUST: 90°

LAMP:V15 Array 1x33.3W/900mA,
3550lm/CRI80/3000K,2793lm/CRI90/3000K,
INCL. LED POWER SUPPLY 900mA-DC
AC 100-240V/50-60Hz
REFLECTOR ANGLE:19°, 31°, 43°.CRI 80/90.



AVAILABLE COLOR:
WHI/GLD
WHI/BLK
BLK/GLD
SLV GRY/BLK

IP20/ROHS/CE/



BL-AGDA

Very simple appearance presents a classic style. Offering changeable black or gold color front rings, which enriched the color matching of the product, customers can change the product style very freely.

Abundant product series give more options to customers, there are various versions like single light, three lights, four lights or linear four lights, etc.

Using Bridgelux led chip, which has steady performance, high lighting output and high CRI. We can make good control on the color binning within 2 SDCM in continuous supply.

There are three sizes of the cylinder, different outputs, TRIAC dimming and non-dimmable versions for options.



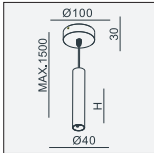
BL- AGDA MINI LED 1x4.6W

MATERIAL:ALUMINUM
ADJUSTABLE ANGLE:FIXED

LAMP:V6 ARRAY 1x4.6W/500mA,
440lm/CRI80/3000K,375lm/CRI90/3000K,
REFLECTOR ANGLE:26°、38°.CRI 80/90.
INCL.LED POWER SUPPLY 500mA-DC
AC 100-240V/50-60Hz ⊕
LENS ANGLE:20°、30°.CRI 80/90.

AVAILABLE COLOR:
WHI/GLD
WHI/BLK
BLK/GLD
GRY/BLK

IP20/ROHS/CE/ ▽



BL- AGDA MINI H200 :H=200mm
BL- AGDA MINI H200 :H=400mm

BL- AGDA LED 1x9.3W

MATERIAL:ALUMINUM
ADJUSTABLE ANGLE:FIXED

LAMP:V8 ARRAY 1x9.3W/500mA,
945lm/CRI80/3000K,739lm/CRI90/3000K,
INCL. LED POWER SUPPLY 500mA-DC
AC 100-240V/50-60Hz ⊕
REFLECTOR ANGLE:15°、33°、48°.CRI 80/90.

AVAILABLE COLOR:
WHI/GLD
WHI/BLK
BLK/GLD
GRY/BLK

IP20/ROHS/CE/ ▽

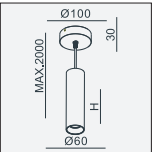
BL- AGDA DIM LED 1x9.3W

MATERIAL:ALUMINUM
ADJUSTABLE ANGLE:FIXED

LAMP:V8 ARRAY 1x9.3W/500mA,
945lm/CRI80/3000K,739lm/CRI90/3000K,
INCL. LED POWER SUPPLY 500mA-DC
TRIAC DIM
AC 100-240V/50-60Hz ⊕
REFLECTOR ANGLE:15°、33°、48°.CRI 80/90.

AVAILABLE COLOR:
WHI/GLD
WHI/BLK
BLK/GLD
GRY/BLK

IP20/ROHS/CE/ ▽



BL- AGDA H250:H=250mm
BL- AGDA H250:H=400mm

BL- AGDA MIDI LED 1x13.8W

MATERIAL:ALUMINUM DIE-CAST
ADJUSTABLE ANGLE:FIXED

LAMP:V10 ARRAY 1x13.8W/500mA,
1320lm/CRI80/3000K,1135lm/CRI90/3000K,
INCL.LED POWER SUPPLY 500mA-DC
AC 100-240V/50-60Hz ⊕
REFLECTOR ANGLE:22°、35°、50°.CRI 80/90

AVAILABLE COLOR:
WHI/GLD
WHI/BLK
BLK/GLD
GRY/BLK

IP20/ROHS/CE/ ▽

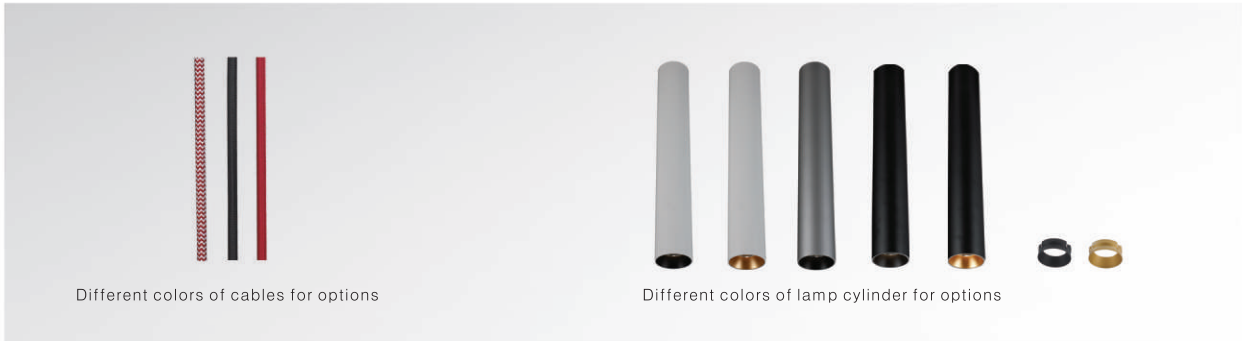
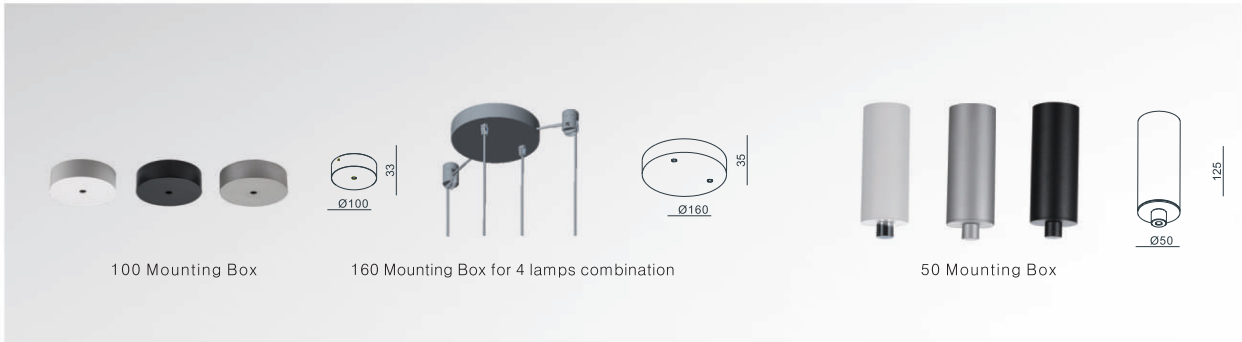
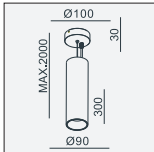
BL- AGDA MIDI DIM LED 1x13.8W

MATERIAL:ALUMINUM DIE-CAST
ADJUSTABLE ANGLE:FIXED

LAMP:V10 ARRAY 1x13.8W/500mA,
1320lm/CRI80/3000K,1135lm/CRI90/3000K,
INCL. LED POWER SUPPLY 500mA-DC
TRIAC DIM
AC 100-240V/50-60Hz ⊕
REFLECTOR ANGLE:22°、35°、50°.CRI 80/90

AVAILABLE COLOR:
WHI/GLD
WHI/BLK
BLK/GLD
GRY/BLK

IP20/ROHS/CE/ ▽





BL- GABBY ED

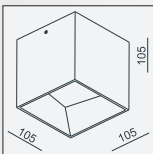


MATERIAL:ALUMINUM DIE-CAST
ADJUSTABLE ANGLE:FIXED

LAMP:LUXEON 3030 2D 9x1.07W/500mA
1120lm/CRI80/3000K,902lm/CRI90/3000K,
INCL.LED POWER SUPPLY 500mA-DC
3000K/4000K/5000K.CRI 80/90

AVAILABLE COLOR:
WHI
BLK
GRY
WHI/GLD
WHI/BLK
BLK/GLD

IP44/ROHS/CE/▽



BL- GABBY CD

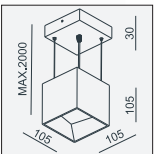


MATERIAL:ALUMINUM DIE-CAST
ADJUSTABLE ANGLE:FIXED

LAMP:LUXEON 3030 2D 9x1.07W/500mA
1120lm/CRI80/3000K,902lm/CRI90/3000K,
INCL.LED POWER SUPPLY 500mA-DC
3000K/4000K/5000K.CRI 80/90

AVAILABLE COLOR:
WHI
BLK
GRY
WHI/GLD
WHI/BLK
BLK/GLD

IP20/ROHS/CE/▽



PHILIPS
LUMILEDS



BL- GABE RECESSED LED 1x14W



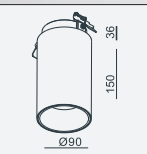
MATERIAL:ALUMINUM DIE-CAST
ADJUSTABLE ANGLE:FIXED

LAMP:V10 ARRAY 1x13.8W/500mA,
1474lm/CRI80/3000K,1167lm/CRI90/3000K
INCL.LED POWER SUPPLY 500mA-DC
AC 100-240V/50-60Hz ⊕
REFLECTOR ANGLE:22°, 35°, 50°.CRI 80/90

AVAILABLE COLOR:
WHI/BLK
BLK/GLD
WHI/GLD
WHI
BLK

IP20/ROHS/CE/▽

Ø82 H60



BL- GABE LED 1x9.3W

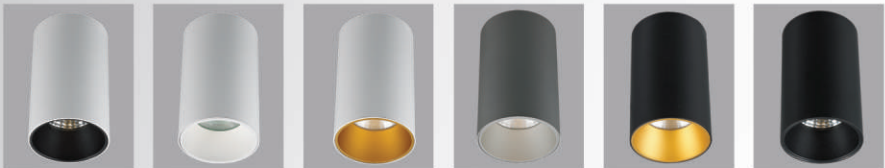
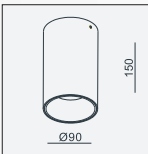


MATERIAL:ALUMINUM DIE-CAST
ADJUSTABLE ANGLE:FIXED

LAMP:V10 ARRAY 1x9.3W/350mA,
965lm/CRI80/3000K,820lm/CRI90/3000K
INCL.LED POWER SUPPLY 350mA-DC
AC 100-240V/50-60Hz ⊕
REFLECTOR ANGLE:22°, 35°, 50°.CRI 80/90

AVAILABLE COLOR:
WHI/BLK
BLK/GLD
WHI/GLD
WHI
BLK

IP20/ROHS/CE/▽



CEILING
SURFACE



BL- GAEL

CEILING
SURFACE



BL- GAEL

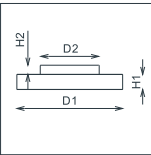


MATERIAL:ALUMINUM+PMMA
ADJUSTABLE ANGLE:FIXED

LAMP:LUXEON 3020,
CRI80/CRI90,3000K/4000K,
INCL.LED POWER SUPPLY
AC 100~240V/50~60Hz

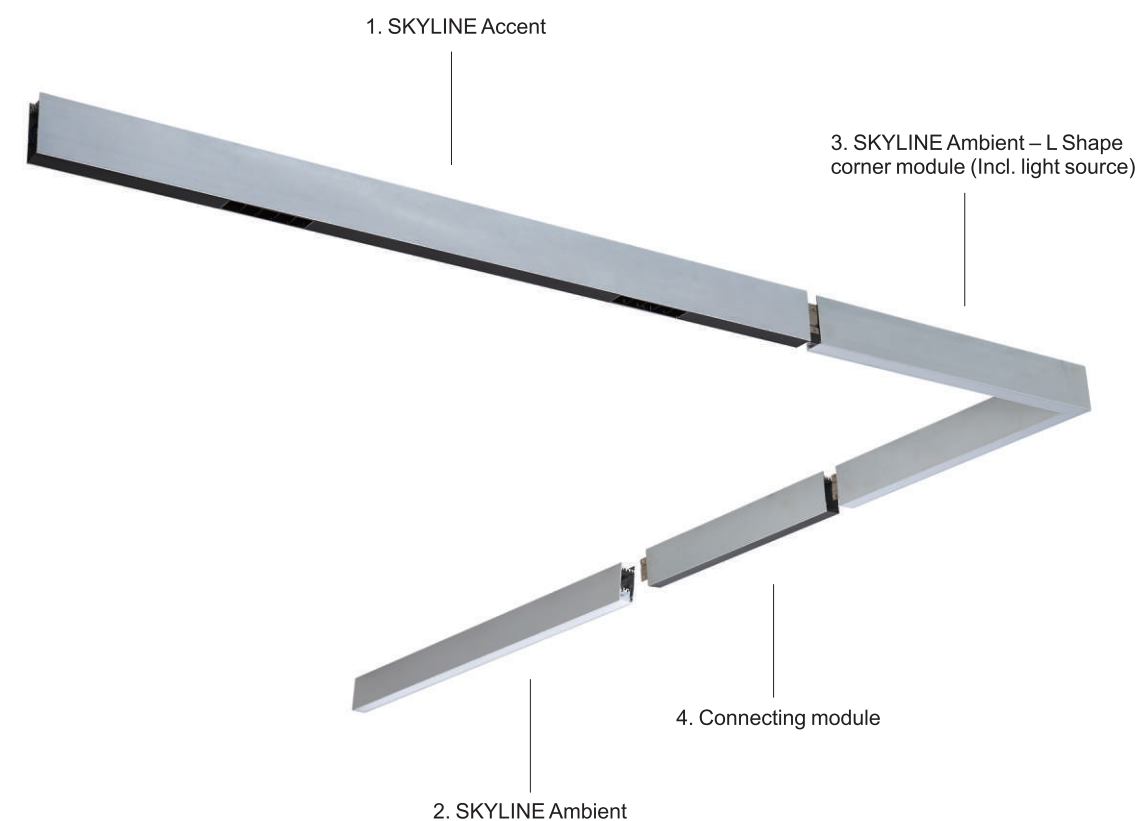
AVAILABLE COLOR:
WHI
BLK

IP40/ROHS/CE/☑



MODEL NO.	SIZE(mm)				POWER (W)	DRIVER(EXTERNAL)	LUMINOUS FLUX(lm)	
	D 1	D 2	H 1	H 2			3000K/CRI80	3000K/CRI90
BL- GAEL-6	160	140	45	20	11.5	NO DIM	1382	1210
BL- GAEL-6 DIM	160	140	45	20	11.5	TRIAC DIMMING	1382	1210
BL- GAEL-10	260	150	50	30	14.4	NO DIM	1728	1512
BL- GAEL-10 DIM	260	150	50	30	14.4	TRIAC DIMMING	1728	1512
BL- GAEL-15	350	260	50	30	23	NO DIM	2614	2287
BL- GAEL-15 DIM	350	260	50	30	23	TRIAC DIMMING	2614	2287
BL- GAEL-18	450	260	50	30	33.5	NO DIM	4039	3534
BL- GAEL-18 1-10V	450	260	50	30	33.5	1~10V DIMMING	4039	3534
BL- GAEL-24	600	260	50	30	45.7	NO DIM	5508	4819
BL- GAEL-24 1-10V	600	260	50	30	45.7	1~10V DIMMING	5508	4819

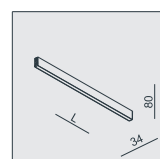




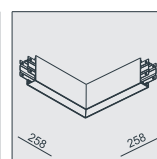
BL-JAKKO

BL-JAKKO is a modular system with very compact sizes, it is consist of accent lighting modules and ambient lighting modules.

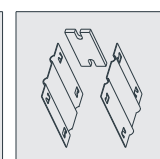
Versatile accessories and reliable mechanical engineering design, allows accent lighting modules to be freely combined with ambient lighting modules. This flexibility of combination can entire satisfy the lighting solutions of different areas in modern lighting design!



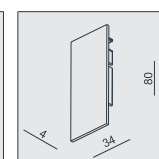
Interval connector module
L=600/1200/1800



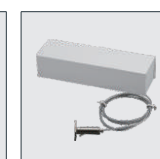
L shape corner module



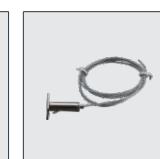
Connecting Pieces



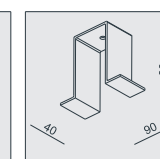
Closing end cap



Power supply base with
suspension cables



Intermediate suspension cable



Aluminum structural (Rimless)
module

Interval connecting module
for using between the
lighting modules, the length
can be customer made.

For angular connecting.

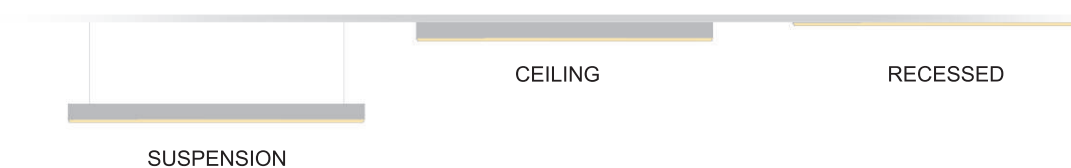
For completing installation
in a linear continuous row,
3pcs of each unit.

For SKYLINE Accent and
SKYLINE Ambient, 2pcs of
each unit.

For suspension mounting
use.

For intermediate module
use when connecting
multiple lighting modules.

For rimless hide mounting
use, installing distance :
50cm.





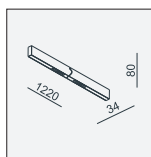
BL- JAAKKO ACCENT-20W

MATERIAL:ALUMINUM

LAMP:OSLON Square EC 2x5x2W/700mA,
2x1120lm/CRI80,2x870lm/CRI90,
INCL. LED POWER SUPPLY 700mA-DC
AC 100-240V/50-60Hz

AVAILABLE COLOR:
Sand White/Black
Sand Black
Sand Grey/Black
Alu Brush/Black

IP20/ROHS/CE/



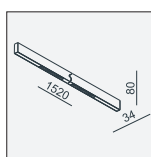
BL- JAAKKO ACCENT-40W E4

MATERIAL:ALUMINUM

LAMP:OSLON Square EC 4x5x2W/700mA,
4480lm/CRI82,3980lm/CRI95,
INCL. LED POWER SUPPLY 700mA-DC
AC 100-240V/50-60Hz

AVAILABLE COLOR:
Sand White/Black
Sand Black
Sand Grey/Black
Alu Brush/Black

IP20/ROHS/CE/



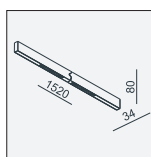
BL- JAAKKO ACCENT-40W

MATERIAL:ALUMINUM

LAMP:OSLON Square EC 2x10x2W/700mA,
4480lm/CRI82,3980lm/CRI95,
INCL. LED POWER SUPPLY 700mA-DC
AC 100-240V/50-60Hz

AVAILABLE COLOR:
Sand White/Black
Sand Black
Sand Grey/Black
Alu Brush/Black

IP20/ROHS/CE/



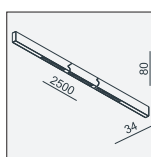
BL- JAAKKO ACCENT-60W

MATERIAL:ALUMINUM

LAMP:OSLON Square EC 3x10x2W/700mA,
6720lm/CRI82,5970lm/CRI95,
INCL. LED POWER SUPPLY 700mA-DC
AC 100-240V/50-60Hz

AVAILABLE COLOR:
Sand White/Black
Sand Black
Sand Grey/Black
Alu Brush/Black

IP20/ROHS/CE/



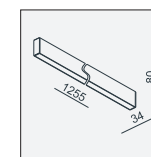
BL- JAAKKO Ambient-26W

MATERIAL:ALUMINUM

LAMP:LUXEON 3020 LED STRIP 6.5Wx4/700mA,
2880lm/CRI80,2400lm/CRI90,
INCL. LED POWER SUPPLY 700mA-DC
AC 100-240V/50-60Hz

AVAILABLE COLOR:
Sand White
Sand Black
Sand Grey
Alu Brush

IP20/ROHS/CE/



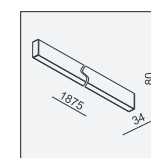
BL- JAAKKO Ambient-39W

MATERIAL:ALUMINUM

LAMP:LUXEON 3020 LED STRIP 6.5Wx6/700mA,
4320lm/CRI80,3600lm/CRI90,
INCL. LED POWER SUPPLY 700mA-DC
AC 100-240V/50-60Hz

AVAILABLE COLOR:
Sand White
Sand Black
Sand Grey
Alu Brush

IP20/ROHS/CE/



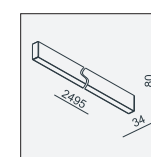
BL- JAAKKO Ambient-59W

MATERIAL:ALUMINUM

LAMP:LUXEON 3020 LED STRIP 6.5Wx8/700mA,
6480lm/CRI80,5400lm/CRI90,
INCL. LED POWER SUPPLY 700mA-DC
AC 100-240V/50-60Hz

AVAILABLE COLOR:
Sand White
Sand Black
Sand Grey
Alu Brush

IP20/ROHS/CE/



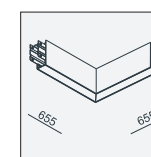
BL- JAAKKO Ambient-29W L

MATERIAL:ALUMINUM

LAMP:LUXEON 3020 LED STRIP 6.5Wx4/700mA,
2880lm/CRI80,2400lm/CRI90,
INCL. LED POWER SUPPLY 700mA-DC
AC 100-240V/50-60Hz

AVAILABLE COLOR:
Sand White
Sand Black
Sand Grey
Alu Brush

IP20/ROHS/CE/





BL-JABARI

BL-JABARI, the whole series is applied with specially designed optic reflector, regardless of using in 1LED, 3LED, 5LED, 10LED or 15LED, all of them can show a circular lighting effect, the light is clean and uniform, it is laudable!

Professionally designed antiglare front ring, very low UGR can be achieved, maximum reduced the uncomfortable feeling by glare on human eyes, offers a high comfort to entire lighting environment.

BL-JABARI series has standard recessed mounting and rimless hide mounting.

High standard LED comes from OSRAM company, which has high lighting output (lm/W) and high CRI.

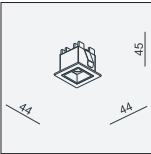


AVAILABLE COLOR: Sand White/Black Sand Black Sand Grey/Black IP20/ROHS/CE/

BL- JABARI 1

MATERIAL:ALU DIE-CAST+ ALU
ADJUSTABLE ANGLE:FIXED
LAMP:OSLON Square EC 1x2W/700mA,
224lm/CRI80,174lm/CRI90,
EXCL.LED POWER SUPPLY700mA-DC
REFLECTOR ANGLE:32°, 46°.CRI 80/90.

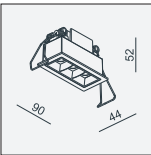
36x36 H75



BL- JABARI 3

MATERIAL:ALU DIE-CAST+ ALU
ADJUSTABLE ANGLE:FIXED
LAMP:OSLON Square EC 3x2W/700mA,
672lm/CRI80,522lm/CRI90,
EXCL.LED POWER SUPPLY700mA-DC
REFLECTOR ANGLE:32°, 46°.CRI 80/90.

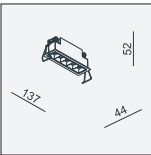
IP20/ROHS/CE/
83x36 H75



BL- JABARI 5

MATERIAL:ALU DIE-CAST+ ALU
ADJUSTABLE ANGLE:FIXED
LAMP:OSLON Square EC 5x2W/700mA,
1120lm/CRI80,870lm/CRI90,
EXCL.LED POWER SUPPLY700mA-DC
REFLECTOR ANGLE:32°, 46°.CRI 80/90.

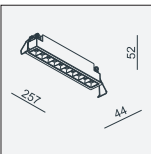
IP20/ROHS/CE/
130x36 H75



BL- JABARI 10

MATERIAL:ALU DIE-CAST+ ALU
ADJUSTABLE ANGLE:FIXED
LAMP:OSLON Square EC 10x2W/700mA,
2240lm/CRI80,1740lm/CRI90,
EXCL.LED POWER SUPPLY700mA-DC
REFLECTOR ANGLE:32°, 46°.CRI 80/90.

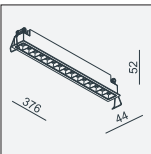
IP20/ROHS/CE/
250x36 H75



BL- JABARI 15

MATERIAL:ALU DIE-CAST+ ALU
ADJUSTABLE ANGLE:FIXED
LAMP:OSLON Square EC 15x2W/700mA,
3360lm/CRI80,2610lm/CRI90,
EXCL.LED POWER SUPPLY700mA-DC
REFLECTOR ANGLE:32°, 46°.CRI 80/90.

IP20/ROHS/CE/
369x36 H75

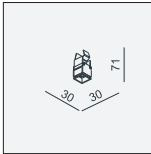


AVAILABLE COLOR:Black IP20/ROHS/CE/

BL- JABARI HIDE 1

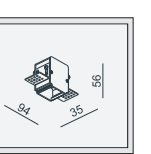
LAMP:OSLON Square EC 1x2W/700mA,
224lm/CRI80,174lm/CRI90,
EXCL.LED POWER SUPPLY700mA-DC
REFLECTOR ANGLE:32°, 46°.CRI 80/90.
INCL MOUNTING KIT 23.

KIT 23 H80



MOUNTING KIT 23
MATERIAL:ALUMINUM

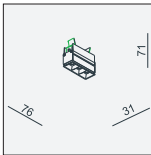
60x37



BL- JABARI HIDE 3

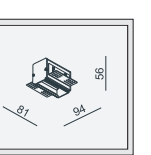
LAMP:OSLON Square EC 3x2W/700mA,
672lm/CRI80,522lm/CRI90,
EXCL.LED POWER SUPPLY700mA-DC
REFLECTOR ANGLE:32°, 46°.CRI 80/90.

KIT 19 H80



MOUNTING KIT 19
MATERIAL:ALUMINUM

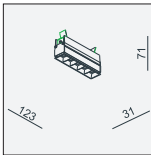
83x60



BL- JABARI HIDE 5

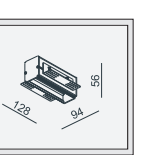
LAMP:OSLON Square EC 5x2W/700mA,
1120lm/CRI80,870lm/CRI90,
EXCL.LED POWER SUPPLY700mA-DC
REFLECTOR ANGLE:32°, 46°.CRI 80/90.
INCL MOUNTING KIT 20.

KIT 20 H80



MOUNTING KIT 20
MATERIAL:ALUMINUM

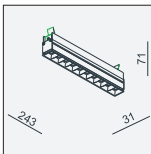
130x60



BL- JABARI HIDE 10

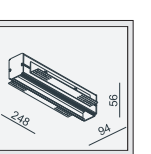
LAMP:OSLON Square EC 10x2W/700mA,
2240lm/CRI80,1740lm/CRI90,
EXCL.LED POWER SUPPLY700mA-DC
REFLECTOR ANGLE:32°, 46°.CRI 80/90.
INCL MOUNTING KIT 21.

KIT 21 H80



MOUNTING KIT 21
MATERIAL:ALUMINUM

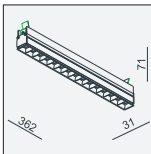
250x60



BL- JABARI HIDE 15

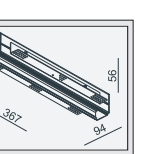
LAMP:OSLON Square EC 15x2W/700mA,
3360lm/CRI80,2610lm/CRI90,
EXCL.LED POWER SUPPLY700mA-DC
REFLECTOR ANGLE:32°, 46°.CRI 80/90.
INCL MOUNTING KIT 22.

KIT 22 H80



MOUNTING KIT 22
MATERIAL:ALUMINUM

370x60





BL- JABEZ

Most parts of the Luminaire are made by Aluminum, it is durable in use. The lamp head can be tunable $\pm 45^{\circ}$.

The whole series is applied with specially designed optic reflector, regardless of using in 5LED, 10LED or 15LED, all of them can show a circular lighting effect, the light is clean and uniform, it is laudable!

Professionally designed antiglare front ring, very low UGR can be achieved, maximum reduced the uncomfortable feeling by glare on human eyes.

High standard LED comes from OSRAM company, which has high lighting output (lm/W) and high CRI.



BL- JABEZ 5

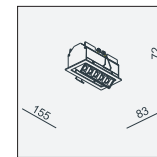
MATERIAL:ALU DIE-CAST+ ALU
ADJUSTABLE ANGLE:30°

LAMP:OSLON Square EC 5x2W/700mA, \diamond
1120lm/CRI80,870lm/CRI90,
EXCL.LED POWER SUPPLY700mA-DC
REFLECTOR ANGLE:32°、46°、CRI 80/90.

AVAILABLE COLOR:
Sand White/Black
Sand Black
Sand Grey/Black

IP20/ROHS/CE/

143X76 H110



BL- JABEZ 10

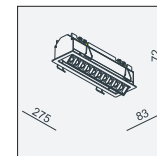
MATERIAL:ALU DIE-CAST+ ALU
ADJUSTABLE ANGLE:30°

LAMP:OSLON Square EC 10x2W/700mA, \diamond
2240lm/CRI80,1740lm/CRI90,
EXCL.LED POWER SUPPLY700mA-DC
REFLECTOR ANGLE:32°、46°、CRI 80/90.

AVAILABLE COLOR:
Sand White/Black
Sand Black
Sand Grey/Black

IP20/ROHS/CE/

263X76 H110



BL- JABEZ 15

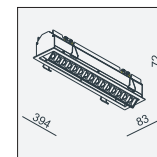
MATERIAL:ALU DIE-CAST+ ALU
ADJUSTABLE ANGLE:30°

LAMP:OSLON Square EC 15x2W/700mA, \diamond
3360lm/CRI80,2610lm/CRI90,
EXCL.LED POWER SUPPLY700mA-DC
REFLECTOR ANGLE:32°、46°、CRI 80/90.

AVAILABLE COLOR:
Sand White/Black
Sand Black
Sand Grey/Black

IP20/ROHS/CE/

382X76 H110





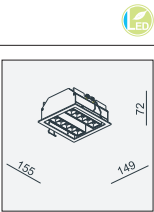
BL- JABEZ 5x2

MATERIAL:ALU DIE-CAST+ ALU
ADJUSTABLE ANGLE:30°
LAMP:OSLON Square EC. 2x5x2W/700mA, 2x1120lm/CRI80, 2x870lm/CRI90,
EXCL.LED POWER SUPPLY700mA-DC
REFLECTOR ANGLE:32°, 46°.CRI 80/90.

AVAILABLE COLOR:
Sand White/Black
Sand Black
Sand Grey/Black

IP20/ROHS/CE/

143X139 H110



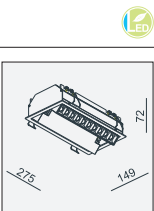
BL- JABEZ 10x2

MATERIAL:ALU DIE-CAST+ ALU
ADJUSTABLE ANGLE:30°
LAMP:OSLON Square EC. 2x10x2W/700mA, 2x2240lm/CRI80, 2x1740lm/CRI90,
EXCL.LED POWER SUPPLY700mA-DC
REFLECTOR ANGLE:32°, 46°.CRI 80/90.

AVAILABLE COLOR:
Sand White/Black
Sand Black
Sand Grey/Black

IP20/ROHS/CE/

263X139 H110



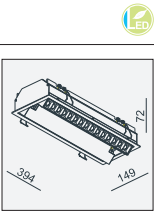
BL- JABEZ 15x2

MATERIAL:ALU DIE-CAST+ ALU
ADJUSTABLE ANGLE:30°
LAMP:OSLON Square EC. 2x15x2W/700mA, 2x3360lm/CRI80, 2x2610lm/CRI90,
EXCL.LED POWER SUPPLY700mA-DC
REFLECTOR ANGLE:32°, 46°.CRI 80/90.

AVAILABLE COLOR:
Sand White/Black
Sand Black
Sand Grey/Black

IP20/ROHS/CE/

382X139 H110





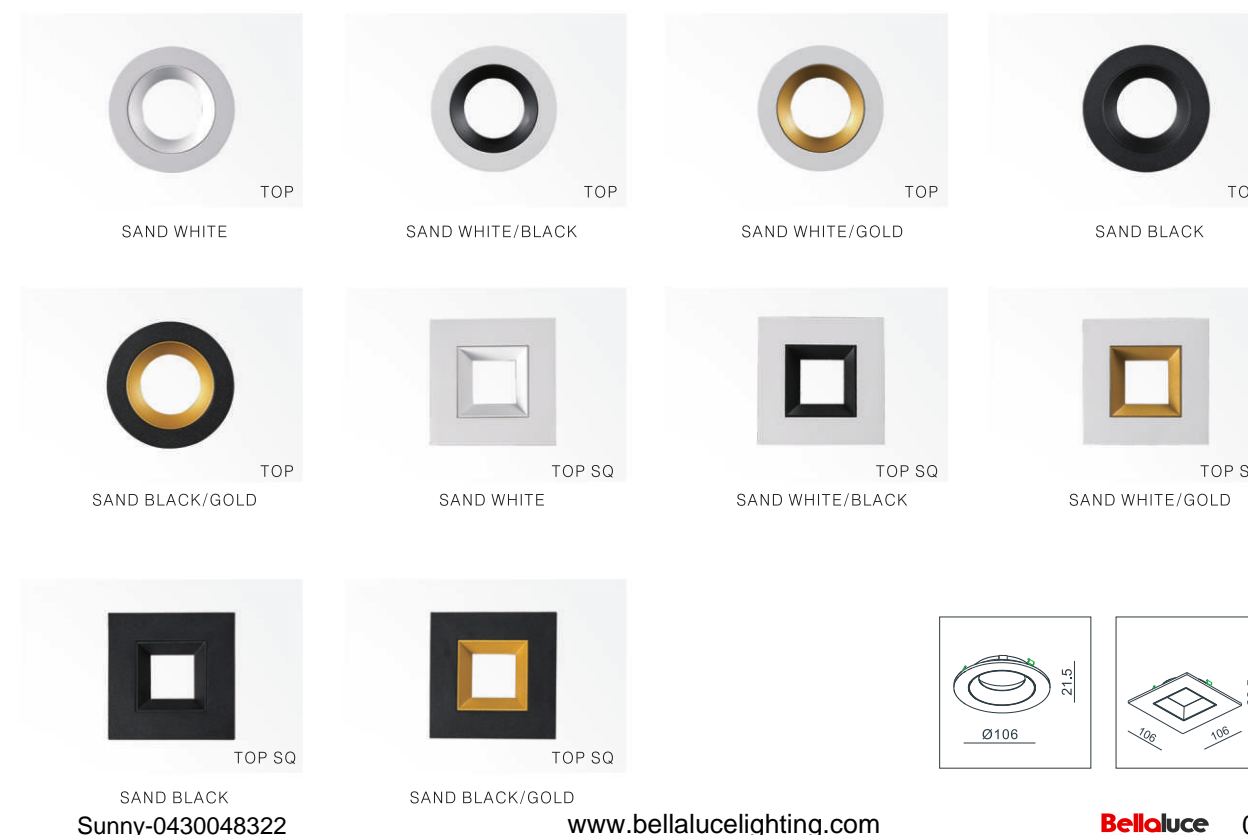
BL-JABIR

It is a multifunctional luminaire for accent lighting, its outstanding performance can meet all the needs of lighting technology, regardless of using in residences, shopping areas, hotels or office environments.

This series can be fixed lighting, or directional lighting of 30° tilting, as well as wall-wash lighting which we will develop in 2016 spring.

This series has a unique separated structure for the lamp and the frame, customers can change the frames of different colors very quickly, which greatly enriched the color matching of the product, getting a new product style by changing the product color, just in a flash! Moreover, there is IP20 frame or IP44 frame for both round and square styles for options, which makes this series can be further used in the bathroom or other moist environments.

This series has a reliable mechanical engineering design and with high standard of optics, which provides a very well control on UGR rate, can ensure a high comfort to entire lighting environment.





LAMP FOR BL- JABIR LED 1x9.3W



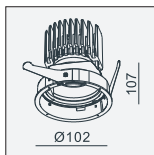
MATERIAL:ALU DIE-CAST
ADJUSTABLE ANGLE:0~30°/350°

LAMP:V8 ARRAY 1x9.3W/500mA, 945lm/CRI80/3000K, 739lm/CRI90/3000K, EXCL.LED POWER SUPPLY 500mA-DC
REFLECTOR ANGLE:15°, 33°, 48°, CRI 80/90.

AVAILABLE COLOR:
Sand White
Sand White/Black
Sand White/Gold
Sand Black
Sand Black/Gold

IP20/ROHS/CE/

Ø98xH130



LAMP FOR BL- JABIR FIXED LED 1x9.2W



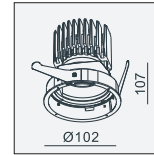
MATERIAL:ALU DIE-CAST
ADJUSTABLE ANGLE:FIXED

LAMP:V8 ARRAY 1x9.2W/500mA, 945lm/CRI80/3000K, 739lm/CRI90/3000K, EXCL.LED POWER SUPPLY 500mA-DC
REFLECTOR ANGLE:15°, 33°, 48°, CRI 80/90.

AVAILABLE COLOR:
Sand White
Sand White/Black
Sand White/Gold
Sand Black
Sand Black/Gold

IP20/ROHS/CE/

Ø98xH130



LAMP FOR BL- JABIR-14W LED 1x13.8W



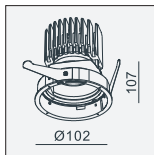
MATERIAL:ALU DIE-CAST
ADJUSTABLE ANGLE:0~30°/350°

LAMP:V10 ARRAY 1x13.8W/500mA, 1474lm/CRI80/3000K, 1167lm/CRI90/3000K, 754lm/CRI97, EXCL.LED POWER SUPPLY 500mA-DC
REFLECTOR ANGLE:22°, 37°, 50°, CRI 80/90/97.

AVAILABLE COLOR:
Sand White
Sand White/Black
Sand White/Gold
Sand Black
Sand Black/Gold

IP20/ROHS/CE/

Ø98xH130



LAMP FOR BL- JABIR FIXED-14W LED 1x13.8W



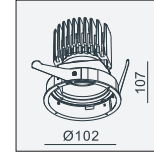
MATERIAL:ALU DIE-CAST
ADJUSTABLE ANGLE:FIXED

LAMP:V10 ARRAY 1x13.8W/500mA, 1474lm/CRI80/3000K, 1167lm/CRI90/3000K, 754lm/CRI97, EXCL.LED POWER SUPPLY 500mA-DC
REFLECTOR ANGLE:22°, 37°, 50°, CRI 80/90/97.

AVAILABLE COLOR:
Sand White
Sand White/Black
Sand White/Gold
Sand Black
Sand Black/Gold

IP20/ROHS/CE/

Ø98xH130



LAMP FOR BL- JABIR-MR16 LED 1x50W



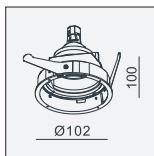
MATERIAL:ALU DIE-CAST
ADJUSTABLE ANGLE:0~30°/350°

LAMP:1xMR16 MAX.50W GU5.3/12V EXCL.TRANSFO

AVAILABLE COLOR:
Sand White
Sand White/Black
Sand White/Gold
Sand Black
Sand Black/Gold

IP20/ROHS/CE/

Ø98xH120



LAMP FOR BL- JABIR FIXED-MR16 LED 1x50W



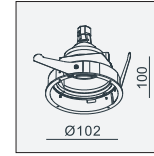
MATERIAL:ALU DIE-CAST
ADJUSTABLE ANGLE:FIXED

LAMP:1xMR16 MAX.50W GU5.3/12V EXCL.TRANSFO

AVAILABLE COLOR:
Sand White
Sand White/Black
Sand White/Gold
Sand Black
Sand Black/Gold

IP20/ROHS/CE/

Ø98xH120



LAMP FOR BL- JABIR-GU10 LED 1x50W



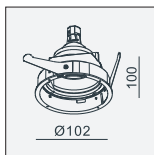
MATERIAL:ALU DIE-CAST
ADJUSTABLE ANGLE:0~30°/350°

LAMP:1xGU10 MAX.50W GU10 230~240V/50~60Hz

AVAILABLE COLOR:
Sand White
Sand White/Black
Sand White/Gold
Sand Black
Sand Black/Gold

IP20/ROHS/CE/

Ø98xH120



LAMP FOR BL- JABIR SQ FIXED-GU10 LED 1x50W



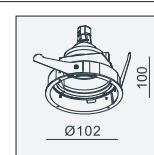
MATERIAL:ALU DIE-CAST
ADJUSTABLE ANGLE:FIXED

LAMP:1xGU10 MAX.50W GU10 230~240V/50~60Hz

AVAILABLE COLOR:
Sand White
Sand White/Black
Sand White/Gold
Sand Black
Sand Black/Gold

IP20/ROHS/CE/

Ø98xH120



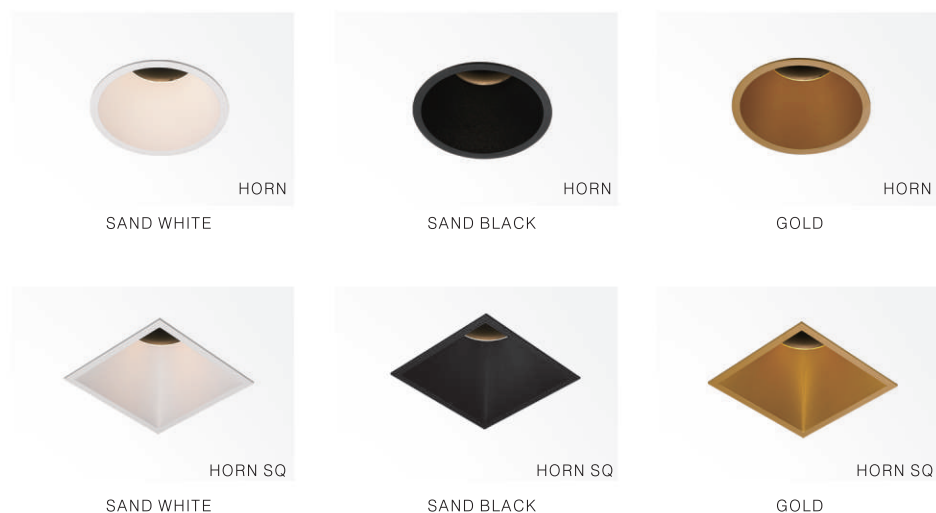
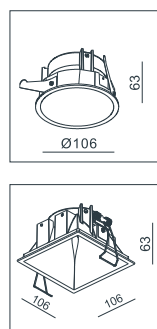


BL-JAC

BL-JAC series is derived from "BL-JABIR" series, its appearance is minimalist. Benefitted from the reliable mechanical structure and high standard optics of "BL-JABIR" series, BL-JAC also has excellent lighting performance and very comfortable lighting distributions.

BL-JAC series has standard recessed mounting and rimless hide mounting versions, the 30° tilting function is throughout the whole series.

BL-JAC series also has a separated structure for the lamp and the frame, with a "HORN" shape appearance, which offers BLACK/WHITE/GOLD colors of front rings for customers' freely matching, there are both round style or square style for options.



LAMP FOR BL-JAC LED 1x9.3W

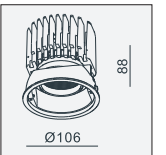
MATERIAL:ALU DIE-CAST
ADJUSTABLE ANGLE:0~30°/350°

LAMP:V8 ARRAY 1x9.3W/500mA, 945lm/CRI80/3000K, 739lm/CRI90/3000K, EXCL.LED POWER SUPPLY 500mA-DC REFLECTOR ANGLE:15°, 33°, 48°, CRI 80/90.

AVAILABLE COLOR:
Sand White
Sand White/Black
Sand White/Gold
Sand Black
Sand Black/Gold

IP20/ROHS/CE/▽

Ø98xH130



LAMP FOR BL-JAC-14W LED 1x13.8W

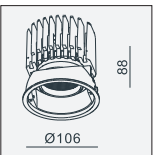
MATERIAL:ALU DIE-CAST
ADJUSTABLE ANGLE:0~30°/350°

LAMP:V10 ARRAY 1x13.8W/500mA, 1474lm/CRI80/3000K, 1167lm/CRI90/3000K, 754lm/CRI97, EXCL.LED POWER SUPPLY 500mA-DC REFLECTOR ANGLE:22°, 37°, 50°, CRI 80/90/97.

AVAILABLE COLOR:
Sand White
Sand White/Black
Sand White/Gold
Sand Black
Sand Black/Gold

IP20/ROHS/CE/▽

Ø98xH130



LAMP FOR BL-JAC-MR16 LED 1x50W

MATERIAL:ALU DIE-CAST
ADJUSTABLE ANGLE:0~30°/350°

LAMP:1xMR16 MAX.50W GU5.3/12V EXCL.TRANSFO

AVAILABLE COLOR:
Sand White
Sand White/Black
Sand White/Gold
Sand Black
Sand Black/Gold

IP20/ROHS/CE/▽

Ø98xH120



LAMP FOR BL-JAC-GU10 LED 1x50W

MATERIAL:ALU DIE-CAST
ADJUSTABLE ANGLE:0~30°/350°

LAMP:1xGU10 MAX.50W GU10 230~240V/50~60Hz

AVAILABLE COLOR:
Sand White
Sand White/Black
Sand White/Gold
Sand Black
Sand Black/Gold

IP20/ROHS/CE/▽

Ø98xH120





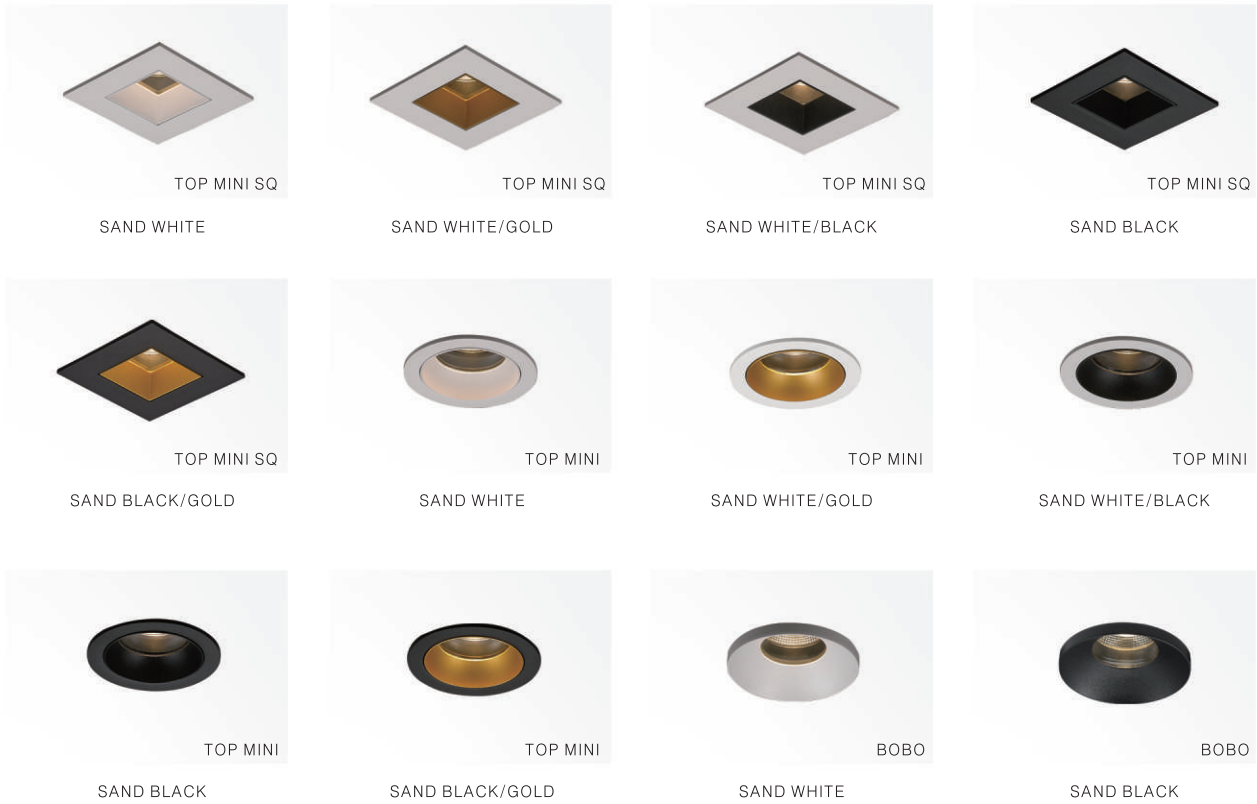
BL- TRACK CIRCULAR LED 1x33.3W

FAST

FAST, the idea comes from two concepts:

More and more customers desire to have bathroom luminaire of exquisite and fashion design. Customers prefer to have multi-style products while paying the same amount of money.

FAST is a product which can meet these two requirements. It offers "TOP MINI", "TOP MINI SQ" and "BOBO" three styles of frames for customers' quickly and freely matching. Based on this character, customers can separately purchase the lamp and different frames, makes the best use of money.



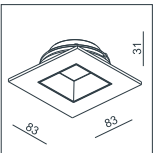
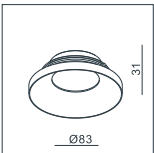
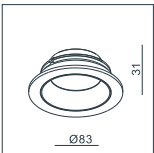
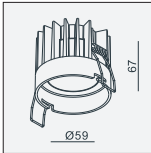
LAMP FOR BL- JAGGAR LED 1x9.2W

MATERIAL:ALUMINUM DIE-CAST
ADJUSTABLE ANGLE:FIXED

LAMP:V8 ARRAY 1x9.2W/500mA,
945lm/CRI80/3000K, 739lm/CRI90/3000K,
EXCL. LED POWER SUPPLY 500mA-DC
REFLECTOR ANGLE:15°, 33°, 48°.CRI 80/90.

AVAILABLE COLOR:
WHI
BLK
GLD
SLV GRY

IP20/ROHS/CE/
 Ø68 H88



CEILING
RECESSED



BL- JAGNA

This series products have strong mechanical performance. Its lamp head is very flexible. It can be extended out like a spot light with a turning adjustment of 90°/350° (Different styles has different angles). Or totally hide into the fixture like a normal recessed downlight.

Using Bridgelux V8 led chip, which has steady performance, high lighting output and high CRI. We can make good control on the color binning within 2 SDCM in continuous supply.

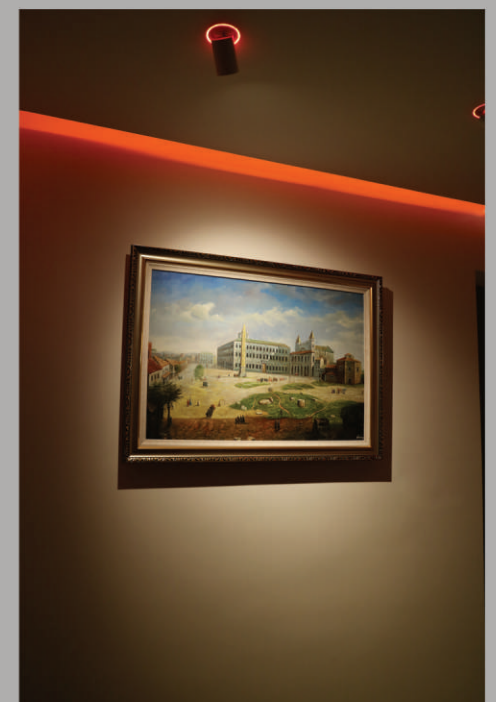
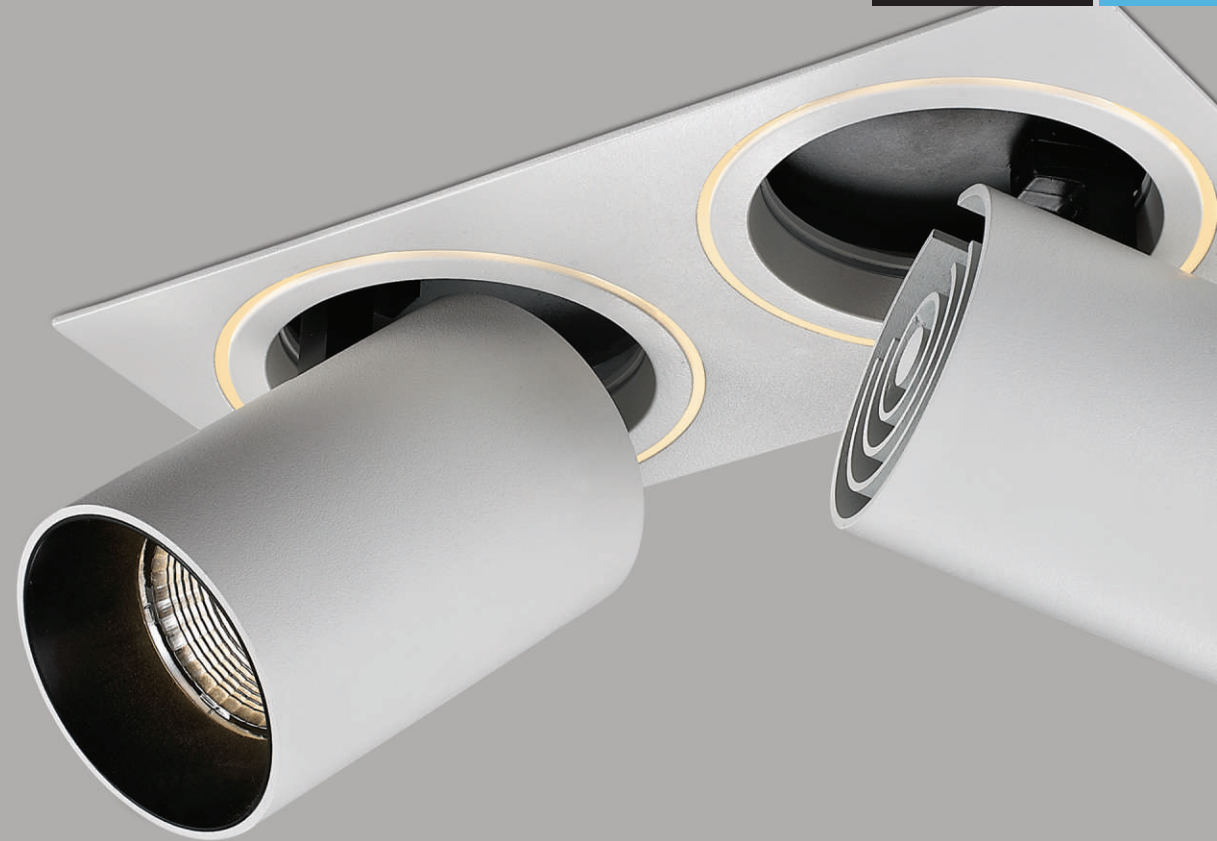
The luminaire can also apply with latest Luxeon MZ led chip from Philips Lumileds. The feature is the minimal lighting size, provide a more compact beam angle and stronger centre luminous intensity. We have got an efficient data: This led chip can achieve an excellent parameters as cd/lm=19.3 when using 9° reflector!

Professional reflector, make sure its excellent luminous data and natural comfortable performance.

There are multi lighting versions like standard recessed mounting, rimless hide mounting, and other two different versions with HALO decorating for customers' options.



CEILING
RECESSED





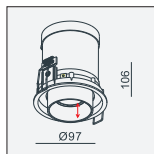
BL-JAGNA LED 1x9.2W

MATERIAL:Alu die-cast
ADJUSTABLE ANGLE:0~90°/350°

LAMP:V8 ARRAY 1x9.2W/500mA
945lm/CRI80/3000K,739lm/CRI90/3000K,
EXCL.LED POWER SUPPLY 500mA-DC
REFLECTOR ANGLE:15°, 33°, 48°.CRI 80/90.

AVAILABLE COLOR:
BLK WHI/GLD
WHI/GLD/WHI/GLD
WHI/BLK BLK/GLD
WHI/BLK/WHI/BLK
SLV GRY/BLK
BLK/WHI/BLK

IP20/ROHS/CE/▽
Ø89 H126



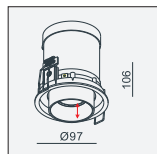
BL-JAGNA-LX MZ LED 1x7.8W

MATERIAL:Alu die-cast
ADJUSTABLE ANGLE:0~90°/350°

LAMP: LUXEON MZ 1x7.8W/700mA
780lm/CRI80/3000K
EXCL.LED POWER SUPPLY 700mA-DC
REFLECTOR ANGLE:9°, 20°, 32°.11°, 27°, 40°
CRI 80.

AVAILABLE COLOR:
BLK WHI/GLD
WHI/GLD/WHI/GLD
WHI/BLK BLK/GLD
WHI/BLK/WHI/BLK
SLV GRY/BLK
BLK/WHI/BLK

IP20/ROHS/CE/▽
Ø89 H126



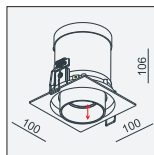
BL-JAGNA 1 LED 1x9.2W

MATERIAL:Alu die-cast
ADJUSTABLE ANGLE:0~90°/350°

LAMP:V8 ARRAY 1x9.2W/500mA
945lm/CRI80/3000K,739lm/CRI90/3000K,
EXCL.LED POWER SUPPLY 500mA-DC
REFLECTOR ANGLE:15°, 33°, 48°.CRI 80/90.

AVAILABLE COLOR:
BLK WHI/GLD
WHI/GLD/WHI/GLD
WHI/BLK BLK/GLD
WHI/BLK/WHI/BLK
SLV GRY/BLK
BLK/WHI/BLK

IP20/ROHS/CE/▽
Ø89 H126



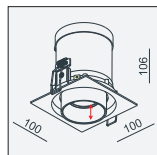
BL-JAGNA 1-LX MZ LED 1x7.8W

MATERIAL:Alu die-cast
ADJUSTABLE ANGLE:0~90°/350°

LAMP: LUXEON MZ 1x7.8W/700mA
780lm/CRI80/3000K
EXCL.LED POWER SUPPLY 700mA-DC
REFLECTOR ANGLE:9°, 20°, 32°.11°, 27°, 40°
CRI 80.

AVAILABLE COLOR:
BLK WHI/GLD
WHI/GLD/WHI/GLD
WHI/BLK BLK/GLD
WHI/BLK/WHI/BLK
SLV GRY/BLK
BLK/WHI/BLK

IP20/ROHS/CE/▽
Ø89 H126



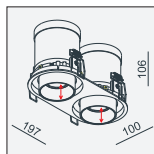
BL-JAGNA x2 LED 2x9.2W

MATERIAL:Alu die-cast
ADJUSTABLE ANGLE:0~90°/350°

LAMP:V8 ARRAY 2x9.2W/500mA
945lm/CRI80/3000K,739lm/CRI90/3000K,
EXCL.LED POWER SUPPLY 500mA-DC
REFLECTOR ANGLE:15°, 33°, 48°.CRI 80/90.

AVAILABLE COLOR:
BLK WHI/GLD
WHI/GLD/WHI/GLD
WHI/BLK BLK/GLD
WHI/BLK/WHI/BLK
SLV GRY/BLK
BLK/WHI/BLK

IP20/ROHS/CE/▽
Ø89,L-100 H126



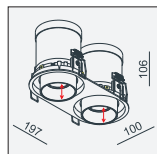
BL-JAGNA x2-LX MZ LED 2x7.8W

MATERIAL:Alu die-cast
ADJUSTABLE ANGLE:0~90°/350°

LAMP: LUXEON MZ 2x7.8W/700mA
780lm/CRI80/3000K
EXCL.LED POWER SUPPLY 700mA-DC
REFLECTOR ANGLE:9°, 20°, 32°.11°, 27°, 40°
CRI 80.

AVAILABLE COLOR:
BLK WHI/GLD
WHI/GLD/WHI/GLD
WHI/BLK BLK/GLD
WHI/BLK/WHI/BLK
SLV GRY/BLK
BLK/WHI/BLK

IP20/ROHS/CE/▽
Ø89,L-100 H126



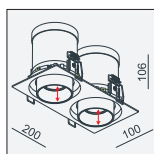
BL-JAGNA 2 LED 2x9.2W

MATERIAL:Alu die-cast
ADJUSTABLE ANGLE:0~90°/350°

LAMP:V8 ARRAY 2x9.2W/500mA
945lm/CRI80/3000K,739lm/CRI90/3000K,
EXCL.LED POWER SUPPLY 500mA-DC
REFLECTOR ANGLE:15°, 33°, 48°.CRI 80/90.

AVAILABLE COLOR:
BLK WHI/GLD
WHI/GLD/WHI/GLD
WHI/BLK BLK/GLD
WHI/BLK/WHI/BLK
SLV GRY/BLK
BLK/WHI/BLK

IP20/ROHS/CE/▽
Ø89,L-100 H126



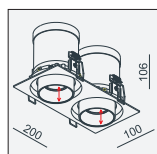
BL-JAGNA 2-LX MZ LED 2x7.8W

MATERIAL:Alu die-cast
ADJUSTABLE ANGLE:0~90°/350°

LAMP: LUXEON MZ 2x7.8W/700mA
780lm/CRI80/3000K
EXCL.LED POWER SUPPLY 700mA-DC
REFLECTOR ANGLE:9°, 20°, 32°.11°, 27°, 40°
CRI 80.

AVAILABLE COLOR:
BLK WHI/GLD
WHI/GLD/WHI/GLD
WHI/BLK BLK/GLD
WHI/BLK/WHI/BLK
SLV GRY/BLK
BLK/WHI/BLK

IP20/ROHS/CE/▽
Ø89,L-100 H126



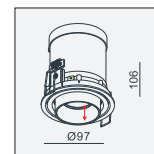
HALO BL-JAGNA LED 1x9.2W

MATERIAL:Alu die-cast
ADJUSTABLE ANGLE:0~90°/350°

LAMP:V8 ARRAY 1x9.2W/500mA
945lm/CRI80/3000K,739lm/CRI90/3000K,
EVERLIGHT SMD 12x0.1W,
EXCL.LED POWER SUPPLY 500mA-DC
REFLECTOR ANGLE:15°, 33°, 48°.CRI 80/90.

AVAILABLE COLOR:
WHI/GLD
WHI/BLK
BLK/GLD
SLV GRY/BLK

IP20/ROHS/CE/▽
Ø89 H126



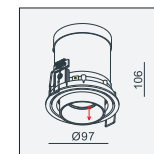
HALO BL-JAGNA-LX MZ LED 1x7.8W

MATERIAL:Alu die-cast
ADJUSTABLE ANGLE:0~90°/350°

LAMP: LUXEON MZ 1x7.8W/700mA
780lm/CRI80/3000K
EVERLIGHT SMD 12x0.1W,
EXCL.LED POWER SUPPLY 700mA-DC
REFLECTOR ANGLE:9°, 20°, 32°.11°, 27°, 40°
CRI 80.

AVAILABLE COLOR:
WHI/GLD
WHI/BLK
BLK/GLD
SLV GRY/BLK

IP20/ROHS/CE/▽
Ø89 H126



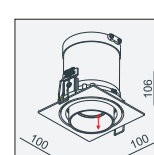
HALO BL-JAGNA 1 LED 1x9.2W

MATERIAL:Alu die-cast
ADJUSTABLE ANGLE:0~90°/350°

LAMP:V8 ARRAY 1x9.2W/500mA
945lm/CRI80/3000K,739lm/CRI90/3000K,
EVERLIGHT SMD 12x0.1W,
EXCL.LED POWER SUPPLY 500mA-DC
REFLECTOR ANGLE:15°, 33°, 48°.CRI 80/90.

AVAILABLE COLOR:
WHI/GLD
WHI/BLK
BLK/GLD
SLV GRY/BLK

IP20/ROHS/CE/▽
Ø89 H126



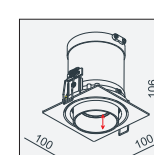
HALO BL-JAGNA 1-LX MZ LED 1x7.8W

MATERIAL:Alu die-cast
ADJUSTABLE ANGLE:0~90°/350°

LAMP: LUXEON MZ 1x7.8W/700mA
780lm/CRI80/3000K
EVERLIGHT SMD 12x0.1W,
EXCL.LED POWER SUPPLY 700mA-DC
REFLECTOR ANGLE:9°, 20°, 32°.11°, 27°, 40°
CRI 80.

AVAILABLE COLOR:
WHI/GLD
WHI/BLK
BLK/GLD
SLV GRY/BLK

IP20/ROHS/CE/▽
Ø89 H126



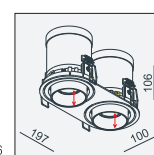
HALO BL-JAGNA x2 LED 2x9.2W

MATERIAL:Alu die-cast
ADJUSTABLE ANGLE:0~90°/350°

LAMP:V8 ARRAY 2x9.2W/500mA
945lm/CRI80/3000K,739lm/CRI90/3000K,
EVERLIGHT SMD 12x0.1W,
EXCL.LED POWER SUPPLY 500mA-DC
REFLECTOR ANGLE:15°, 33°, 48°.CRI 80/90.

AVAILABLE COLOR:
WHI/GLD
WHI/BLK
BLK/GLD
SLV GRY/BLK

IP20/ROHS/CE/▽
Ø89,L-100 H126



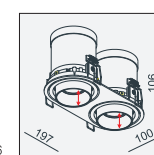
HALO BL-JAGNA x2-LX MZ LED 2x7.8W

MATERIAL:Alu die-cast
ADJUSTABLE ANGLE:0~90°/350°

LAMP: LUXEON MZ 2x7.8W/700mA
780lm/CRI80/3000K
EVERLIGHT SMD 12x0.1W,
EXCL.LED POWER SUPPLY 700mA-DC
REFLECTOR ANGLE:9°, 20°, 32°.11°, 27°, 40°
CRI 80.

AVAILABLE COLOR:
WHI/GLD
WHI/BLK
BLK/GLD
SLV GRY/BLK

IP20/ROHS/CE/▽
Ø89,L-100 H126



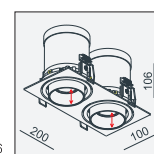
HALO BL-JAGNA 2 LED 2x9.2W

MATERIAL:Alu die-cast
ADJUSTABLE ANGLE:0~90°/350°

LAMP:V8 ARRAY 1x9.2W/500mA
945lm/CRI80/3000K,739lm/CRI90/3000K,
EVERLIGHT SMD 12x0.1W,
EXCL.LED POWER SUPPLY 500mA-DC
REFLECTOR ANGLE:15°, 33°, 48°.CRI 80/90.

AVAILABLE COLOR:
WHI/GLD
WHI/BLK
BLK/GLD
SLV GRY/BLK

IP20/ROHS/CE/▽
Ø89,L-100 H126



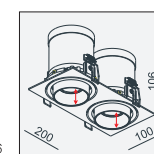
HALO BL-JAGNA 2-LX MZ LED 2x7.8W

MATERIAL:Alu die-cast
ADJUSTABLE ANGLE:0~90°/350°

LAMP: LUXEON MZ 2x7.8W/700mA
780lm/CRI80/3000K
EVERLIGHT SMD 12x0.1W,
EXCL.LED POWER SUPPLY 700mA-DC
REFLECTOR ANGLE:9°, 20°, 32°.11°, 27°, 40°
CRI 80.

AVAILABLE COLOR:
WHI/GLD
WHI/BLK
BLK/GLD
SLV GRY/BLK

IP20/ROHS/CE/▽
Ø89,L-100 H126





BL-JAGNA HIDE-LX MZ
LED 1x7.8W



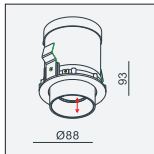
MATERIAL:Alu die-cast
ADJUSTABLE ANGLE:0~90°/350°

LAMP:V8 ARRAY 1x9.2W/500mA, 945lm/CRI80/3000K, 739lm/CRI90/3000K,
EXCL.LED POWER SUPPLY 500mA-DC
REFLECTOR ANGLE:15°, 33°, 48°.CRI 80/90.
INCL. MOUNTING KIT 8

AVAILABLE COLOR:
BLK /WHI/GLD
WHI/GLD/WHI/GLD
WHI/BLK /BLK/GLD
WHI/BLK/WHI/BLK
SLV GRY/BLK
BLK/WHI/BLK

IP20/ROHS/CE/

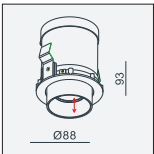
KIT 8 H126



AVAILABLE COLOR:
BLK /WHI/GLD
WHI/GLD/WHI/GLD
WHI/BLK /BLK/GLD
WHI/BLK/WHI/BLK
SLV GRY/BLK
BLK/WHI/BLK

IP20/ROHS/CE/

Ø89 H126



HALO BL-JAGNA HIDE
LED 1x9.2W



HALO BL-JAGNA HIDE-LX MZ
LED 1x7.8W

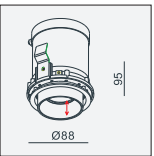
MATERIAL:Alu die-cast
ADJUSTABLE ANGLE:0~90°/350°

LAMP:V8 ARRAY 1x9.2W/500mA, 945lm/CRI80/3000K, 739lm/CRI90/3000K,
EVERLIGHT SMD 12x0.1W,
EXCL.LED POWER SUPPLY 500mA-DC
REFLECTOR ANGLE:15°, 33°, 48°.CRI 80/90.
INCL. MOUNTING KIT 8

AVAILABLE COLOR:
WHI/GLD
WHI/BLK
BLK/GLD
SLV GRY/BLK

IP20/ROHS/CE/

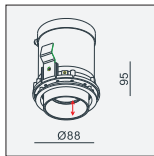
KIT 8 H126



AVAILABLE COLOR:
WHI/GLD
WHI/BLK
BLK/GLD
SLV GRY/BLK

IP20/ROHS/CE/

Ø89 H126



X-HALO BL-JAGNA
LED 1x9.2W



X-HALO BL-JAGNA-LX MZ
LED 1x7.8W

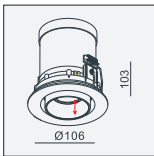
MATERIAL:Alu die-cast
ADJUSTABLE ANGLE:0~80°/350°

LAMP:V8 ARRAY 1x9.2W/500mA, 945lm/CRI80/3000K, 739lm/CRI90/3000K,
EVERLIGHT SMD 12x0.1W,
EXCL.LED POWER SUPPLY 500mA-DC
REFLECTOR ANGLE:15°, 33°, 48°.CRI 80/90.

AVAILABLE COLOR:
WHI/GLD
WHI/BLK
BLK/GLD
SLV GRY/BLK

IP20/ROHS/CE/

Ø89 H123



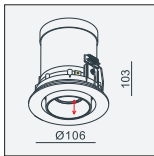
MATERIAL:Alu die-cast
ADJUSTABLE ANGLE:0~80°/350°

LAMP: LUXEON MZ 1x7.8W/700mA, 780lm/CRI80/3000K,
EVERLIGHT SMD 12x0.1W,
EXCL.LED POWER SUPPLY 700mA-DC
REFLECTOR ANGLE:9°, 20°, 32°.11°, 27°, 40°CRI 80.

AVAILABLE COLOR:
WHI/GLD
WHI/BLK
BLK/GLD
SLV GRY/BLK

IP20/ROHS/CE/

Ø89 H123



X-BL-JAGNA LED 1x9.2W



BL-JAGNA-LX MZ LED 1x7.8W

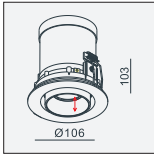
MATERIAL:Alu die-cast
ADJUSTABLE ANGLE:0~80°/350°

LAMP:V8 ARRAY 1x9.2W/500mA, 945lm/CRI80/3000K, 739lm/CRI90/3000K,
EVERLIGHT SMD 12x0.1W,
EXCL.LED POWER SUPPLY 500mA-DC
REFLECTOR ANGLE:15°, 33°, 48°.CRI 80/90.

AVAILABLE COLOR:
WHI/GLD
WHI/BLK
BLK/GLD
SLV GRY/BLK

IP20/ROHS/CE/

Ø89 H123



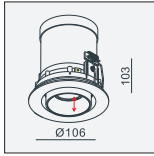
MATERIAL:Alu die-cast
ADJUSTABLE ANGLE:0~80°/350°

LAMP: LUXEON MZ 1x7.8W/700mA, 780lm/CRI80/3000K,
EVERLIGHT SMD 12x0.1W,
EXCL.LED POWER SUPPLY 700mA-DC
REFLECTOR ANGLE:9°, 20°, 32°.11°, 27°, 40°CRI 80.

AVAILABLE COLOR:
WHI/GLD
WHI/BLK
BLK/GLD
SLV GRY/BLK

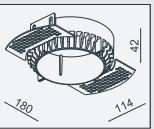
IP20/ROHS/CE/

Ø89 H123



MOUNTING KIT 8
MATERIAL:Alu die-cast

Ø127 H126





EVA BL-JAGNA H61

LED 1x9.2W



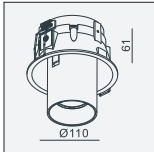
MATERIAL:Alu die-cast
ADJUSTABLE ANGLE:0~45°/350°

LAMP:V8 ARRAY 1x9.2W/500mA
945lm/CRI80/3000K,739lm/CRI90/3000K,
EXCL.LED POWER SUPPLY 500mA-DC
REFLECTOR ANGLE:15°, 33°, 48°.CRI 80/90.

AVAILABLE COLOR:
WHI/GLD
WHI/BLK
BLK/GLD
SLV GRY/BLK

IP20/ROHS/CE/

Ø102 H80



EVA BL-JAGNA H61-LX MZ

LED 1x7.8W



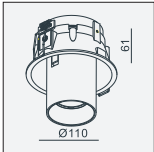
MATERIAL:Alu die-cast
ADJUSTABLE ANGLE:0~45°/350°

LAMP: LUXEON MZ 1x7.8W/700mA
780lm/CRI80/3000K
EXCL.LED POWER SUPPLY 700mA-DC
REFLECTOR ANGLE:9°, 20°, 32°.11°, 27°, 40°
CRI 80.

AVAILABLE COLOR:
WHI/GLD
WHI/BLK
BLK/GLD
SLV GRY/BLK

IP20/ROHS/CE/

Ø102 H80



EVA BL-JAGNA H61 HIDE

LED 1x9.2W



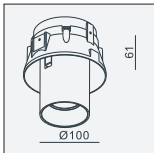
MATERIAL:Alu die-cast
ADJUSTABLE ANGLE:0~45°/350°

LAMP:V8 ARRAY 1x9.2W/500mA
945lm/CRI80/3000K,739lm/CRI90/3000K,
EXCL.LED POWER SUPPLY 500mA-DC
REFLECTOR ANGLE:15°, 33°, 48°.CRI 80/90.
INCL. MOUNTING KIT 12

AVAILABLE COLOR:
WHI/GLD
WHI/BLK
BLK/GLD
SLV GRY/BLK
BLK/WHI/BLK
GLD/WHI/GLD

IP20/ROHS/CE/

KIT 12 H80



EVA BL-JAGNA H61 HIDE-LX MZ

LED 1x7.8W



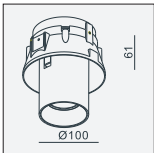
MATERIAL:Alu die-cast
ADJUSTABLE ANGLE:0~45°/350°

LAMP: LUXEON MZ 1x7.8W/700mA
780lm/CRI80/3000K
EXCL.LED POWER SUPPLY 700mA-DC
REFLECTOR ANGLE:9°, 20°, 32°.11°, 27°, 40°
CRI 80.
INCL. MOUNTING KIT 12

AVAILABLE COLOR:
WHI/GLD
WHI/BLK
BLK/GLD
SLV GRY/BLK
BLK/WHI/BLK
GLD/WHI/GLD

IP20/ROHS/CE/

KIT 12 x H80



EVA BL-JAGNA

LED 1x9.2W



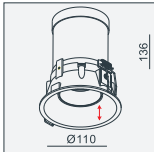
MATERIAL:Alu die-cast
ADJUSTABLE ANGLE:0~45°/350°

LAMP:V8 ARRAY 1x9.2W/500mA
945lm/CRI80/3000K,739lm/CRI90/3000K,
EXCL.LED POWER SUPPLY 500mA-DC
REFLECTOR ANGLE:15°, 33°, 48°.CRI 80/90.

AVAILABLE COLOR:
WHI/GLD
WHI/BLK
BLK/GLD
SLV GRY/BLK

IP20/ROHS/CE/

Ø102 H156



EVA BL-JAGNA-LX MZ

LED 1x7.8W



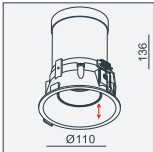
MATERIAL:Alu die-cast
ADJUSTABLE ANGLE:0~45°/350°

LAMP: LUXEON MZ 1x7.8W/700mA
780lm/CRI80/3000K
EXCL.LED POWER SUPPLY 700mA-DC
REFLECTOR ANGLE:9°, 20°, 32°.11°, 27°, 40°
CRI 80.

AVAILABLE COLOR:
WHI/GLD
WHI/BLK
BLK/GLD
SLV GRY/BLK

IP20/ROHS/CE/

Ø102 H156



EVA BL-JAGNA HIDE

LED 1x9.2W



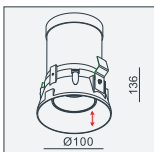
MATERIAL:Alu die-cast
ADJUSTABLE ANGLE:0~45°/350°

LAMP:V8 ARRAY 1x9.2W/500mA
945lm/CRI80/3000K,739lm/CRI90/3000K,
EXCL.LED POWER SUPPLY 500mA-DC
REFLECTOR ANGLE:15°, 33°, 48°.CRI 80/90.
INCL. MOUNTING KIT 12

AVAILABLE COLOR:
WHI/GLD
WHI/BLK
BLK/GLD
SLV GRY/BLK
BLK/WHI/BLK
GLD/WHI/GLD

IP20/ROHS/CE/

KIT 12 H156



EVA BL-JAGNA HIDE-LX MZ

LED 1x7.8W



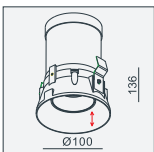
MATERIAL:Alu die-cast
ADJUSTABLE ANGLE:0~45°/350°

LAMP: LUXEON MZ 1x7.8W/700mA
780lm/CRI80/3000K
EXCL.LED POWER SUPPLY 700mA-DC
REFLECTOR ANGLE:9°, 20°, 32°.11°, 27°, 40°
CRI 80.
INCL. MOUNTING KIT 12

AVAILABLE COLOR:
WHI/GLD
WHI/BLK
BLK/GLD
SLV GRY/BLK
BLK/WHI/BLK
GLD/WHI/GLD

IP20/ROHS/CE/

KIT 12 x H156



WHI/BLK



WHI/BLK/WHI/BLK



SLV GRY/BLK



WHI/GLD



WHI/GLD/WHI/GLD



BLK



BLK/WHI/BLK



BLK/BLK/GLD



BL-JAHAN

This series products have strong mechanical performance. The lamp head is flexible. When extended out, it can make different turning adjustments like 80°/350°, (adjustments are base on different styles). When put the lamp head into body, it shows like a normal recessed downlight.

Using Bridgelux VERO 13 or V15 led chip, which provides CRI80/90/97 for clients' choices.

The whole series are use superior Europe reflectors, which can assure the products to have outstanding optical data and quality!



BL-JAHAN -33W

LED 1x33.3W

MATERIAL:Alu die-cast +Steel
ADJUSTABLE ANGLE:0~80°/350°

LAMP: V15 Array 1x25.2/33.3W/500mA/900mA, 2840~3550lm/CRI80/3000K, 2234~2793lm/CRI90/3000K, EXCL.LED POWER SUPPLY 500mA~900mA-DC REFLECTOR ANGLE:19°, 31°, 43°.CRI 80/90.

AVAILABLE COLOR:
WHI
BLK
WHI/BLK/WHI/BLK
SLV GRY/BLK/SLV GRY/BLK

IP20/ROHS/CE/▽
132x132 H140



BL-JAHAN 2 -33W

LED 2x33.3W

MATERIAL:Alu die-cast +Steel
ADJUSTABLE ANGLE:0~80°/350°

LAMP: V15 Array 2x25.2/33.3W/500mA/900mA, 2840~3550lm/CRI80/3000K, 2234~2793lm/CRI90/3000K, EXCL.LED POWER SUPPLY 500mA~900mA-DC REFLECTOR ANGLE:19°, 31°, 43°.CRI 80/90.

AVAILABLE COLOR:
WHI
BLK
WHI/BLK/WHI/BLK
SLV GRY/BLK/SLV GRY/BLK

IP20/ROHS/CE/▽
272x132 H140



BL-JAHAN -23W

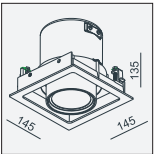
LED 1x23.4W

MATERIAL:Alu die-cast +Steel
ADJUSTABLE ANGLE:0~80°/350°

LAMP: VERO 13 1x16.2/23.4W~500mA/700mA, 1910~2540lm/CRI80/3000K, 1480~1969lm/CRI90/3000K, EXCL.LED POWER SUPPLY 500mA~700mA-DC REFLECTOR ANGLE:16°, 34°, 50°.CRI 80/90.

AVAILABLE COLOR:
WHI
BLK
WHI/BLK/WHI/BLK
SLV GRY/BLK/SLV GRY/BLK

IP20/ROHS/CE/▽
132x132 H140



BL-JAHAN 2 -23W

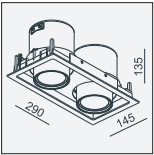
LED 2x23.4W

MATERIAL:Alu die-cast +Steel
ADJUSTABLE ANGLE:0~80°/350°

LAMP: VERO 13 2x16.2/23.4W~500mA/700mA, 1910~2540lm/CRI80/3000K, 1480~1969lm/CRI90/3000K, EXCL.LED POWER SUPPLY 500mA~700mA-DC REFLECTOR ANGLE:16°, 34°, 50°.CRI 80/90.

AVAILABLE COLOR:
WHI
BLK
WHI/BLK/WHI/BLK
SLV GRY/BLK/SLV GRY/BLK

IP20/ROHS/CE/▽
272x132 H140





BL-JAHAN HIDE-33W LED 1x33.3W

MATERIAL:Alu die-cast +Steel
ADJUSTABLE ANGLE:0~80°/350°

LAMP: V15 Array 1x25.2/33.3W/500mA/900mA, 2840~3550lm/CRI80/3000K, 2234~2793lm/CRI90/3000K, EXCL.LED POWER SUPPLY 500mA-900mA-DC
REFLECTOR ANGLE:19°, 31°, 43°.CRI 80/90.
INCL MOUNTING KIT 10

AVAILABLE COLOR:
WHI
BLK
WHI/BLK/WHI/BLK
SLV GRY/BLK/SLV GRY/BLK

IP20/ROHS/CE/

KIT 10 H140

BL-JAHAN HIDE-23W LED 1x23.3W

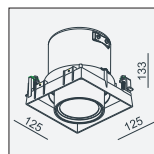
MATERIAL:Alu die-cast +Steel
ADJUSTABLE ANGLE:0~80°/350°

LAMP: VERO 13 1x16.2/23.4W-500mA/700mA, 1910~2540lm/CRI80/3000K, 1480~1969lm/CRI90/3000K, EXCL.LED POWER SUPPLY 500mA-700mA-DC
REFLECTOR ANGLE:16°, 34°, 50°. CRI 80/90.
INCL MOUNTING KIT 10

AVAILABLE COLOR:
WHI
BLK
WHI/BLK/WHI/BLK
SLV GRY/BLK/SLV GRY/BLK

IP20/ROHS/CE/

KIT 10 H140



BL-JAHAN 2 HIDE-33W LED 2x33.3W

MATERIAL:Alu die-cast +Steel
ADJUSTABLE ANGLE:0~80°/350°

LAMP: V15 Array 2x25.2/33.3W/500mA/900mA, 2840~3550lm/CRI80/3000K, 2234~2793lm/CRI90/3000K, EXCL.LED POWER SUPPLY 500mA-900mA-DC
REFLECTOR ANGLE:19°, 31°, 43°. CRI 80/90.
INCL MOUNTING KIT 11

AVAILABLE COLOR:
WHI
BLK
WHI/BLK/WHI/BLK
SLV GRY/BLK/SLV GRY/BLK

IP20/ROHS/CE/

KIT 11 H140

BL-JAHAN HIDE 2 -23W LED 2x23.3W

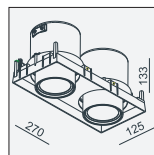
MATERIAL:Alu die-cast +Steel
ADJUSTABLE ANGLE:0~80°/350°

LAMP: VERO 13 2x16.2/23.4W-500mA/700mA, 1910~2540lm/CRI80/3000K, 1480~1969lm/CRI90/3000K, EXCL.LED POWER SUPPLY 500mA-700mA-DC
REFLECTOR ANGLE:16°, 34°, 50°. CRI 80/90.
INCL MOUNTING KIT 11

AVAILABLE COLOR:
WHI
BLK
WHI/BLK/WHI/BLK
SLV GRY/BLK/SLV GRY/BLK

IP20/ROHS/CE/

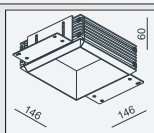
KIT 11 H140



MOUNTING KIT 10

MATERIAL:ALUMINUM

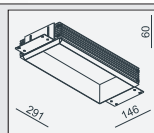
147x147 H150



MOUNTING KIT 11

MATERIAL:ALUMINUM

292x147 H150



BL-PRADO-33W LED 1x33.3W

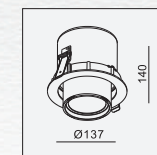
MATERIAL:Alu die-cast +Steel
ADJUSTABLE ANGLE:0~80°/350°

LAMP: V15 Array 1x25.2/33.3W/500mA/900mA, 2840~3550lm/CRI80/3000K, 2234~2793lm/CRI90/3000K, EXCL.LED POWER SUPPLY 500mA-900mA-DC
REFLECTOR ANGLE:19°, 31°, 43°.CRI 80/90.

AVAILABLE COLOR:
WHI
BLK
WHI/BLK
SLV GRY/BLK

IP20/ROHS/CE/

Ø127xH130



BL-PRADO-23W LED 1x23.4W

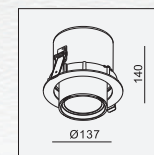
MATERIAL:Alu die-cast +Steel
ADJUSTABLE ANGLE:0~80°/350°

LAMP: VERO 13 1x16.2/23.4W-500mA/700mA, 1910~2540lm/CRI80/3000K, 1480~1969lm/CRI90/3000K, EXCL.LED POWER SUPPLY 500mA-700mA-DC
REFLECTOR ANGLE:16°, 34°, 50°. CRI 80/90.

AVAILABLE COLOR:
WHI
BLK
WHI/BLK
SLV GRY/BLK

IP20/ROHS/CE/

Ø127xH130





CEILING
RECESSED



BL-JAI

This series is owning a simple appearance. It provided the lamp head a 400mm elasticity (stretch out and draw back) based on ingeniously designed. Meanwhile it can be a 350°/30°adjustment of rotating/ tilting.

Using Luxeon MZ led from Philips Lumileds company, which has very steady performance.

Customers can freely use single unit or combine with 3 units, 5 units, 7 units or multi units as a group, It will looks more fashionable and active when in a combination.

Using superior European reflector, which assured a outstanding optical data and natural comfortable lighting performance!

PHILIPS
LUMILEDS

067 **Bellaluce**
BEAUTIFUL LIGHTS & BEAUTIFUL PEOPLE

www.bellalucelighting.com

Sunny-0430048322

CEILING
RECESSED



BL-JAI LED 1x7.8W

MATERIAL:ALU DIE-CAST + ALU
ADJUSTABLE ANGLE:0~30°/355°

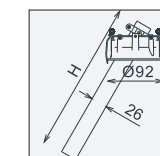
LAMP: LUXEON MZ 1x7.8W/700mA,◇
780lm/CRI80/3000K,
EXCL.LED POWER SUPPLY 700mA-DC
REFLECTOR ANGLE:20°, 33°.CRI 80.

AVAILABLE COLOR:

WHI
BLK
WHI/GLD
WHI/BLK
BLK/GLD
SLV GRY/BLK

IP20/ROHS/CE/▽

Ø83



BL-JAI-LUXEON MZ H250:H=250mm
BL-JAI-LUXEON MZ H400:H=400mm

BL-JAI HIDE-LX MZ LED 1x7.8W

MATERIAL:ALU DIE-CAST + ALU
ADJUSTABLE ANGLE:0~30°/355°

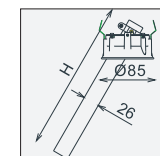
LAMP: LUXEON MZ 1x7.8W/700mA,◇
780lm/CRI80/3000K,
EXCL.LED POWER SUPPLY 700mA-DC
REFLECTOR ANGLE:20°, 33°.CRI 80.
INCL. MOUNTING KIT 5

AVAILABLE COLOR:

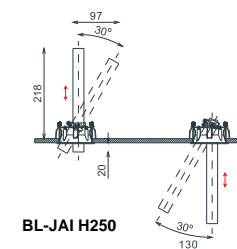
WHI
BLK
WHI/GLD
WHI/BLK
BLK/GLD
SLV GRY/BLK

IP20/ROHS/CE/▽

KIT 5



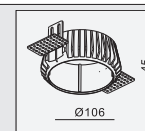
BL-JAI HIDE-LUXEON MZ H250:H=250mm
BL-JAI HIDE-LUXEON MZ H400:H=400mm



BL-JAI H250

MOUNTING KIT 5
MATERIAL:ALUMINUM

Ø114 H150



www.bellalucelighting.com

Sunny-0430048322

Bellaluce
BEAUTIFUL LIGHTS & BEAUTIFUL PEOPLE

068



BL-LACEY



WHI/BLK/WHI/BLK



WHI/BLK



WHI/BLK/BLK



WHI/BLK/GLD



WHI/GLD



SLV GRY/BLK/SLV GRY/BLK



SLV GRY/BLK



BLK



BLK/GLD



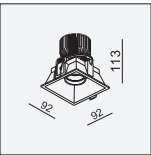
Honeycomb-35 Linear Spread Lens-35 Softening Lens-35 Spread Lens-35

BL- LACEY -9W LED 1x9.2W



MATERIAL:ALU DIE-CAST + ALU
ADJUSTABLE ANGLE:0~20°/355°

LAMP:V8 ARRAY 1x9.2W/500mA,
945lm/CRI80/3000K,739lm/CRI90/3000K,
EXCL.LED POWER SUPPLY 500mA-DC
REFLECTOR ANGLE:23°, 34°, 50°. CRI 80/90.



AVAILABLE COLOR:
BLK
WHI/BLK
BLK/GLD
WHII/GLD
WHI/BLK/BLK
WHI/BLK/GLD
SLV GRY/BLK
WHI/BLK/WHI/BLK
SLV GRY/BLK/SLV GRY/BLK

IP20/ROHS/CE/

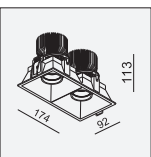
86x86 H140

BL- LACEY 2-9W LED 2x9.2W



MATERIAL:ALU DIE-CAST + ALU
ADJUSTABLE ANGLE:0~20°/355°

LAMP:V8 ARRAY 2x9.2W/500mA,
945lm/CRI80/3000K,739lm/CRI90/3000K,
EXCL.LED POWER SUPPLY 500mA-DC
REFLECTOR ANGLE:23°, 34°, 50°. CRI 80/90.



AVAILABLE COLOR:
BLK
WHI/BLK
BLK/GLD
WHII/GLD
WHI/BLK/BLK
WHI/BLK/GLD
SLV GRY/BLK
WHI/BLK/WHI/BLK
SLV GRY/BLK/SLV GRY/BLK

IP20/ROHS/CE/

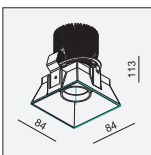
168x86 H140

BL- LACEY HIDE -9W LED 1x9.2W



MATERIAL:ALU DIE-CAST + ALU
ADJUSTABLE ANGLE:0~20°/360°

LAMP:V8 ARRAY 1x9.2W/500mA,
945lm/CRI80/3000K,739lm/CRI90/3000K,
EXCL.LED POWER SUPPLY 500mA-DC
REFLECTOR ANGLE:23°, 34°, 50°. CRI 80/90.
INCL. MOUNTING KIT 1



AVAILABLE COLOR:
BLK
WHI/BLK
BLK/GLD
WHII/GLD
WHI/BLK/BLK
WHI/BLK/GLD
SLV GRY/BLK
WHI/BLK/WHI/BLK
SLV GRY/BLK/SLV GRY/BLK

IP20/ROHS/CE/

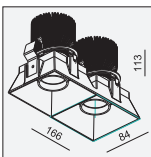
KIT 1 H140

BL- LACEY 2 HIDE -9W LED 2x9.2W



MATERIAL:ALU DIE-CAST + ALU
ADJUSTABLE ANGLE:0~20°/360°

LAMP:V8 ARRAY 2x9.2W/500mA,
945lm/CRI80/3000K,739lm/CRI90/3000K,
EXCL.LED POWER SUPPLY 500mA-DC
REFLECTOR ANGLE:23°, 34°, 50°. CRI 80/90.
INCL. MOUNTING KIT 2

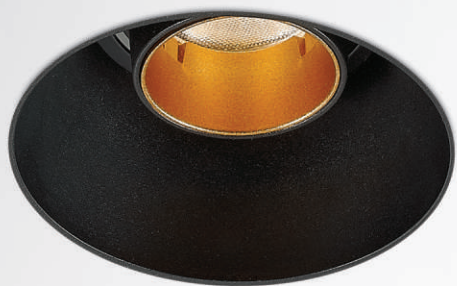
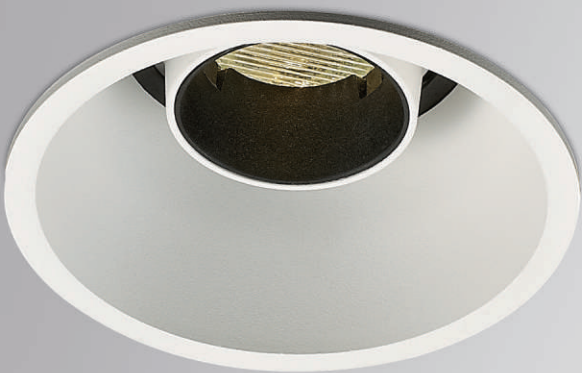


AVAILABLE COLOR:
BLK
WHI/BLK
BLK/GLD
WHII/GLD
WHI/BLK/BLK
WHI/BLK/GLD
SLV GRY/BLK
WHI/BLK/WHI/BLK
SLV GRY/BLK/SLV GRY/BLK

IP20/ROHS/CE/

KIT 2 H140





BL- LADY LED 1x9.2W



MATERIAL:ALU DIE-CAST + ALU
ADJUSTABLE ANGLE:0~20°/360°

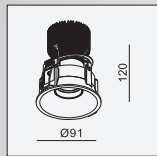
LAMP:V8 ARRAY 1x9.2W/500mA, 945lm/CRI80/3000K, 739lm/CRI90/3000K, EXCL.LED POWER SUPPLY 500mA-DC
REFLECTOR ANGLE:23°, 34°, 50°. CRI 80/90.

AVAILABLE COLOR:

BLK
WHI/BLK
BLK/GLD
WHI/GLD
WHI/BLK/BLK
WHI/BLK/GLD
SLV GRY/BLK
WHI/BLK/WHI/BLK
SLV GRY/BLK/SLV GRY/BLK

IP20/ROHS/CE/▽

Ø83 H150



BL- LADY HIDE LED 1x9.2W



MATERIAL:ALU DIE-CAST + ALU
ADJUSTABLE ANGLE:0~20°/360°

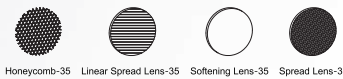
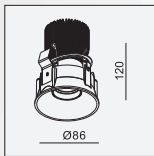
LAMP:V8 ARRAY 1x9.2W/500mA, 945lm/CRI80/3000K, 739lm/CRI90/3000K, EXCL.LED POWER SUPPLY 500mA-DC
REFLECTOR ANGLE:23°, 34°, 50°. CRI 80/90.
INCL. MOUNTING KIT 5

AVAILABLE COLOR:

BLK
WHI/BLK
BLK/GLD
WHI/GLD
WHI/BLK/BLK
WHI/BLK/GLD
SLV GRY/BLK
WHI/BLK/WHI/BLK
SLV GRY/BLK/SLV GRY/BLK

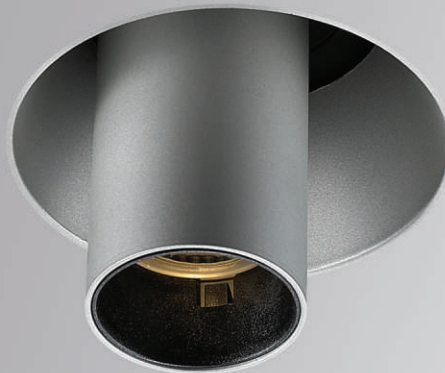
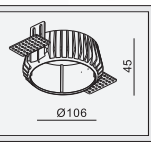
IP20/ROHS/CE/▽

Ø86 KIT 5 H150



MOUNTING KIT 5
MATERIAL:ALUMINUM

Ø114 H150



BL- LADY OK-6W



LED 1x6.2W

MATERIAL:ALU DIE-CAST + ALU
ADJUSTABLE ANGLE:0~20°/360°

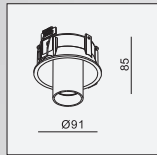
LAMP:V8 ARRAY 1x6.2W/350mA, 703lm/CRI80/3000K, 550lm/CRI90/3000K, EXCL.LED POWER SUPPLY 350mA-DC
REFLECTOR ANGLE:23°, 34°, 50°. CRI 80/90.

AVAILABLE COLOR:

BLK
BLK/GLD
WHI/BLK
WHI/GLD
SLV GRY/BLK

IP20/ROHS/CE/▽

Ø83 H90



BL- LADY OK HIDE-6W



LED 1x6.2W

MATERIAL:ALU DIE-CAST + ALU
ADJUSTABLE ANGLE:0~20°/360°

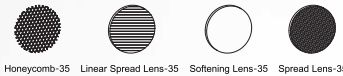
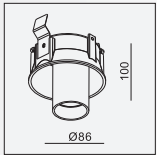
LAMP:V8 ARRAY 1x6.2W/350mA, 703lm/CRI80/3000K, 550lm/CRI90/3000K, EXCL.LED POWER SUPPLY 350mA-DC
REFLECTOR ANGLE:23°, 34°, 50°. CRI 80/90.
INCL. MOUNTING KIT 5

AVAILABLE COLOR:

BLK
BLK/GLD
WHI/BLK
WHI/GLD
SLV GRY/BLK

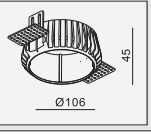
IP20/ROHS/CE/▽

Ø86 KIT 5 H90



MOUNTING KIT 5
MATERIAL:ALUMINUM

Ø114 H150



CEILING
RECESSED



WHI/BLK



WHI/BLK/WHI/BLK



WHI/BLK/BLK



WHI/BLK/GLD



WHII/GLD



SLV GRY/BLK/SLV GRY/BLK



SLV GRY/BLK



BLK



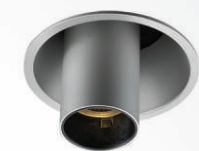
BLK/GLD



WHI/BLK



WHII/GLD



SLV GRY/BLK



BLK



BLK/GLD

CEILING
RECESSED





BL-LAEL -9W LED 1x9.3W



MATERIAL:ALUMINUM DIE-CAST
ADJUSTABLE ANGLE:FIXED

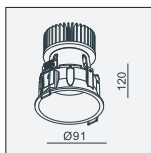
LAMP:V10 ARRAY 1x9.3W/350mA, 965lm/CRI80/3000K, 820lm/CRI90/3000K
EXCL.LED POWER SUPPLY 350mA-DC

REFLECTOR ANGLE:22°, 35°, 50°.CRI 80/90

AVAILABLE COLOR:
WHI
BLK
SLV GRY
GLD

IP20/ROHS/CE/

Ø83 H150



BL-LAEL HIDE -9W

LED 1x9.3W



MATERIAL:ALUMINUM DIE-CAST
ADJUSTABLE ANGLE:FIXED

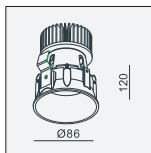
LAMP:V10 ARRAY 1x9.3W/350mA, 965lm/CRI80/3000K, 820lm/CRI90/3000K
EXCL.LED POWER SUPPLY 350mA-DC

REFLECTOR ANGLE:22°, 35°, 50°.CRI 80/90
INCL. MOUNTING KIT 5

AVAILABLE COLOR:
WHI
BLK
SLV GRY
GLD

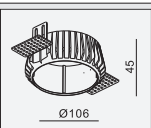
IP20/ROHS/CE/

KIT 5 H150



MOUNTING KIT 5
MATERIAL:ALUMINUM

Ø114



BL-LAEL MIDI -14W

LED 1x13.7W



MATERIAL:ALUMINUM DIE-CAST
ADJUSTABLE ANGLE:FIXED

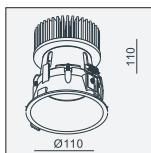
LAMP:VERO 10 1x13.7W/350mA, 1354lm/CRI80/3000K, 1074lm/CRI90/3000K, 890lm/CRI97/3000K
EXCL.LED POWER SUPPLY 350mA-DC

REFLECTOR ANGLE:13°, 31°, 49°.CRI 80/90/97

AVAILABLE COLOR:
WHI
BLK
SLV GRY
GLD

IP20/ROHS/CE/

Ø102 H150



BL-LAEL MIDI HIDE -14W

LED 1x13.7W



MATERIAL:ALUMINUM DIE-CAST
ADJUSTABLE ANGLE:FIXED

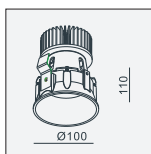
LAMP:VERO 10 1x13.7W/350mA, 1354lm/CRI80/3000K, 1074lm/CRI90/3000K, 890lm/CRI97/3000K
EXCL.LED POWER SUPPLY 350mA-DC

REFLECTOR ANGLE:13°, 31°, 49°.CRI 80/90/97
INCL. MOUNTING KIT 12

AVAILABLE COLOR:
WHI
BLK
SLV GRY
GLD

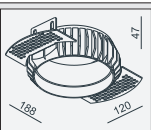
IP20/ROHS/CE/

KIT 12 H150



MOUNTING KIT 12
MATERIAL:ALUMINUM

Ø127



BL-LAGINA LED 1x9.2W



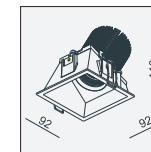
MATERIAL:ALU DIE-CAST + ALU
ADJUSTABLE ANGLE:FIXED 30°

LAMP:V8 ARRAY 1x9.2W/500mA, 945lm/CRI80/3000K, 739lm/CRI90/3000K
EXCL.LED POWER SUPPLY 500mA-DC
REFLECTOR ANGLE:22°, 32°, 45°.CRI 80/90.

AVAILABLE COLOR:
WHI
BLK
SLV GRY
WHI/BLK

IP20/ROHS/CE/

83x83 H135



BL-LAGINA-MR16 LED 1x50W

BL-LAGINA-GU10 LED 1x50W

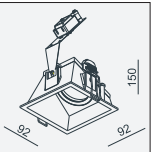
MATERIAL:ALU DIE-CAST
ADJUSTABLE ANGLE:FIXED 30°

LAMP:1xMR16 MAX.50W GU5.3/12V EXCL.TRANSFO

AVAILABLE COLOR:
WHI
BLK
SLV GRY
WHI/BLK

IP20/ROHS/CE/

83x83 H170



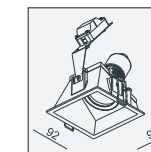
MATERIAL:ALU DIE-CAST
ADJUSTABLE ANGLE:FIXED 30°

LAMP:1xGU10 MAX.50W GU10 230-240V/50-60Hz

AVAILABLE COLOR:
WHI
BLK
SLV GRY
WHI/BLK

IP20/ROHS/CE/

83x83 H170



BL-PORSHE LED 1x9.2W



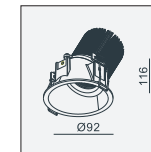
MATERIAL:ALU DIE-CAST + ALU
ADJUSTABLE ANGLE:FIXED 30°

LAMP:V8 ARRAY 1x9.2W/500mA, 945lm/CRI80/3000K, 739lm/CRI90/3000K
EXCL.LED POWER SUPPLY 500mA-DC
REFLECTOR ANGLE:22°, 32°, 45°.CRI 80/90.

AVAILABLE COLOR:
WHI
BLK
SLV GRY
WHI/BLK

IP20/ROHS/CE/

Ø83 H135



BL-PORSHE-MR16 LED 1x50W

BL-PORSHE-GU10 LED 1x50W

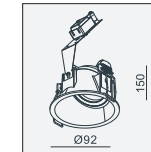
MATERIAL:ALU DIE-CAST
ADJUSTABLE ANGLE:FIXED 30°

LAMP:1xMR16 MAX.50W GU5.3/12V EXCL.TRANSFO

AVAILABLE COLOR:
WHI
BLK
SLV GRY
WHI/BLK

IP20/ROHS/CE/

Ø83xH170



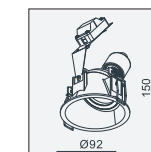
MATERIAL:ALU DIE-CAST
ADJUSTABLE ANGLE:FIXED 30°

LAMP:1xGU10 MAX.50W GU10 230-240V/50-60Hz

AVAILABLE COLOR:
WHI
BLK
SLV GRY
WHI/BLK

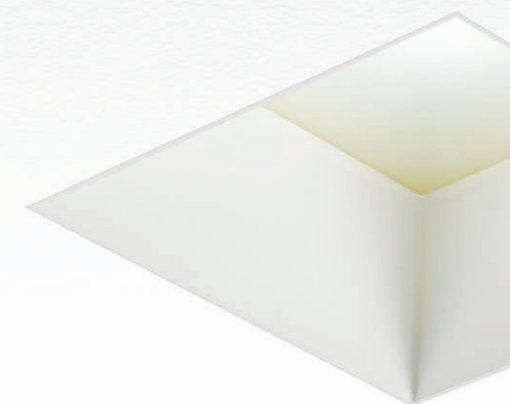
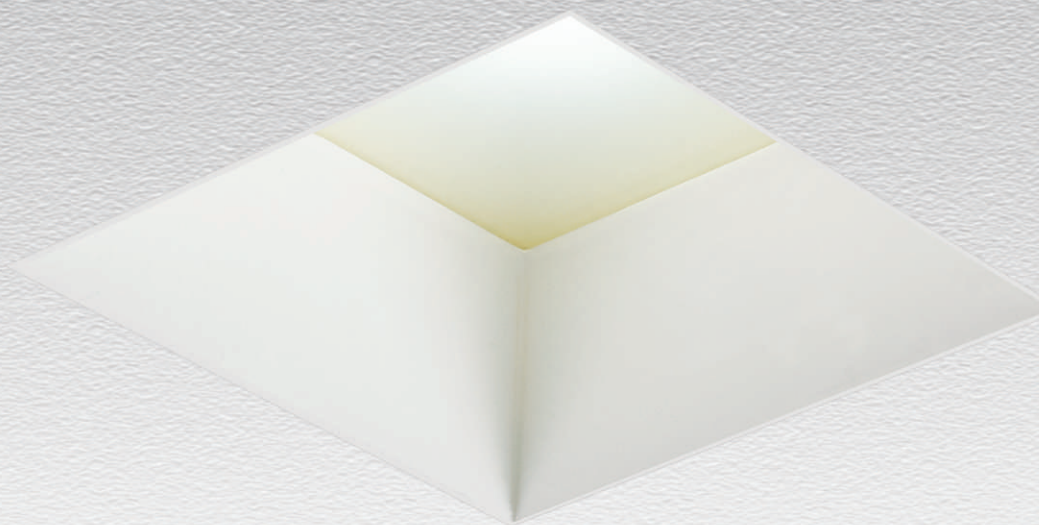
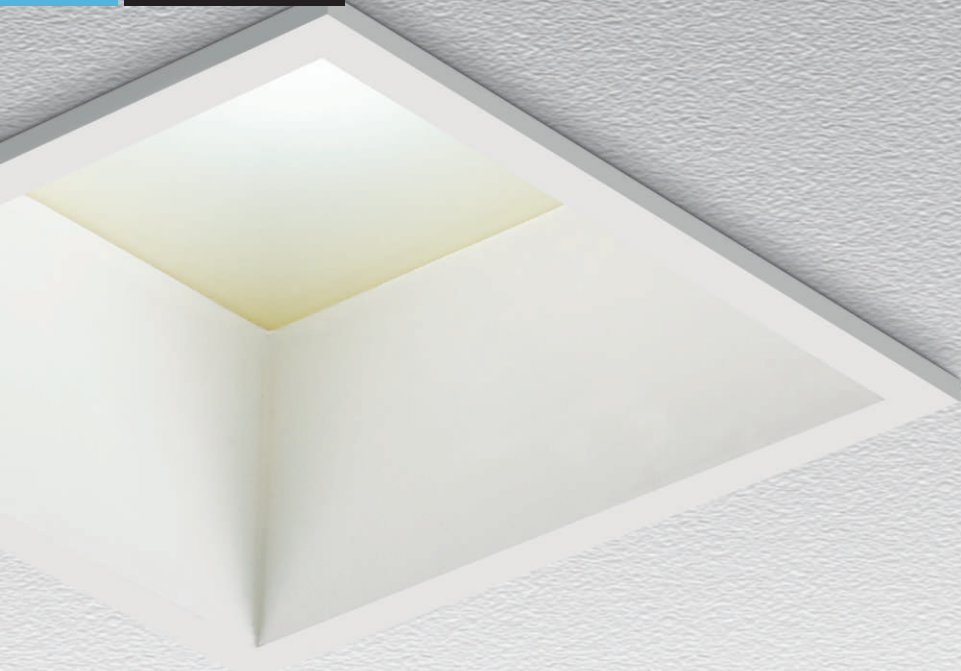
IP20/ROHS/CE/

Ø83xH170



CEILING
RECESSED

CEILING
RECESSED



BL-OAKLEY

BL-OAKLEY is a series for essential lighting, its appearance design is consistent with the own minimalist style of NSL, classic and good-looking.

With the development of LED technology, meanwhile benefited from LUXEON 3030 2D(2 chip)SMD and a PMMA lens with superior diffusing effect, X-SKY series has got further technology upgrading, now it has higher output and more competitive price!

PHILIPS
LUMILEDS

079 **Belloluce**
BEAUTIFUL LIGHTS & BEAUTIFUL PEOPLE

www.bellalucelighting.com

Sunny-0430048322

Sunny-0430048322

www.bellalucelighting.com

Belloluce
BEAUTIFUL LIGHTS & BEAUTIFUL PEOPLE

080



BL-OAKLEY-10W

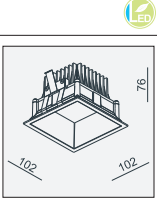
MATERIAL:ALUMINUM DIE-CAST
ADJUSTABLE ANGLE:FIXED

LAMP:LUXEON 3030 2D 9x1.07W/500mA, 1120lm/CRI80/3000K,902lm/CRI90/3000K,
EXCL.LED POWER SUPPLY 500mA-DC
3000K/4000K/5000K.CRI 80/90
INCL. MOUNTING KIT

AVAILABLE COLOR:
WHI
BLK
GRY

IP44/ROHS/CE/

93x93 H83



BL-OAKLEY MIDI-16W

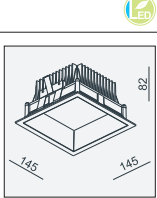
MATERIAL:ALUMINUM DIE-CAST
ADJUSTABLE ANGLE:FIXED

LAMP:LUXEON 3030 2D 15x1.07W/500mA, 1700lm/CRI80/3000K,1501lm/CRI90/3000K,
EXCL.LED POWER SUPPLY 500mA-DC
3000K/4000K/5000K.CRI 80/90

AVAILABLE COLOR:
WHI
BLK
GRY

IP44/ROHS/CE/

130x130 H90



BL-OAKLEY MAX-22W

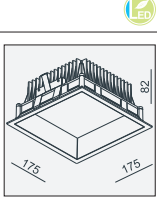
MATERIAL:ALUMINUM DIE-CAST
ADJUSTABLE ANGLE:FIXED

LAMP:LUXEON 3030 2D 25x0.87W/700mA, 2420lm/CRI80/3000K,2145lm/CRI90/3000K,
EXCL.LED POWER SUPPLY 700mA-DC
3000K/4000K/5000K.CRI 80/90

AVAILABLE COLOR:
WHI
BLK
GRY

IP44/ROHS/CE/

163x163 H110



BL-OAKLEY MM-33W

MATERIAL:ALUMINUM DIE-CAST
ADJUSTABLE ANGLE:FIXED

LAMP:LUXEON 3030 2D 35x0.95W/1050mA, 3580lm/CRI80/3000K,3157lm/CRI90/3000K,
EXCL.LED POWER SUPPLY 1050mA-DC
3000K/4000K/5000K.CRI 80/90

AVAILABLE COLOR:
WHI
BLK
GRY

IP44/ROHS/CE/

183x183 H110

BL-OAKLEY MM-23W

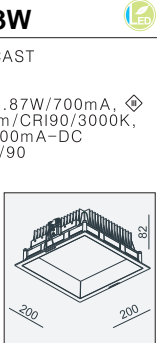
MATERIAL:ALUMINUM DIE-CAST
ADJUSTABLE ANGLE:FIXED

LAMP:LUXEON 3030 2D 25x0.87W/700mA, 2420lm/CRI80/3000K,2145lm/CRI90/3000K,
EXCL.LED POWER SUPPLY 700mA-DC
3000K/4000K/5000K.CRI 80/90

AVAILABLE COLOR:
WHI
BLK
GRY

IP44/ROHS/CE/

183x183 H110



BL-OAKLEY HIDE-10W

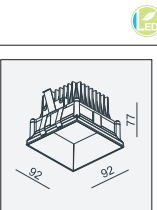
MATERIAL:ALUMINUM DIE-CAST
ADJUSTABLE ANGLE:FIXED

LAMP:LUXEON 3030 2D 9x1.07W/500mA, 1120lm/CRI80/3000K,902lm/CRI90/3000K,
EXCL.LED POWER SUPPLY 500mA-DC
3000K/4000K/5000K.CRI 80/90
INCL. MOUNTING KIT 3A

AVAILABLE COLOR:
WHI
BLK
GRY

IP44/ROHS/CE/

KIT 3A H100



BL-OAKLEY MIDI HIDE-16W

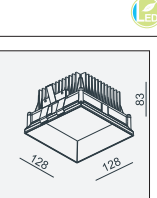
MATERIAL:ALUMINUM DIE-CAST
ADJUSTABLE ANGLE:FIXED

LAMP:LUXEON 3030 2D 15x1.07W/500mA, 1700lm/CRI80/3000K,1501lm/CRI90/3000K,
EXCL.LED POWER SUPPLY 500mA-DC
3000K/4000K/5000K.CRI 80/90
INCL. MOUNTING KIT 13

AVAILABLE COLOR:
WHI
BLK
GRY

IP44/ROHS/CE/

KIT 13 H110



BL-OAKLEY MAX HIDE-22W

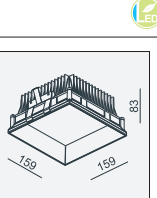
MATERIAL:ALUMINUM DIE-CAST
ADJUSTABLE ANGLE:FIXED

LAMP:LUXEON 3030 2D 25x0.87W/700mA, 2420lm/CRI80/3000K,2145lm/CRI90/3000K,
EXCL.LED POWER SUPPLY 500mA-DC
3000K/4000K/5000K.CRI 80/90
INCL. MOUNTING KIT 14

AVAILABLE COLOR:
WHI
BLK
GRY

IP44/ROHS/CE/

KIT 14 H110



BL-OAKLEY MM HIDE-33W

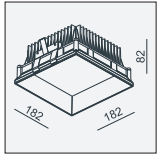
MATERIAL:ALUMINUM DIE-CAST
ADJUSTABLE ANGLE:FIXED

LAMP:LUXEON 3030 2D 35x0.95W/1050mA, 3580lm/CRI80/3000K,3157lm/CRI90/3000K,
EXCL.LED POWER SUPPLY 1050mA-DC
3000K/4000K/5000K.CRI 80/90
INCL. MOUNTING KIT 24

AVAILABLE COLOR:
WHI
BLK
GRY

IP44/ROHS/CE/

KIT 24 H110



BL-OAKLEY MM HIDE-22W

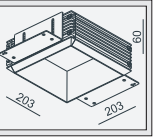
MATERIAL:ALUMINUM DIE-CAST
ADJUSTABLE ANGLE:FIXED

LAMP:LUXEON 3030 2D 25x0.87W/700mA, 2420lm/CRI80/3000K,2145lm/CRI90/3000K,
EXCL.LED POWER SUPPLY 700mA-DC
3000K/4000K/5000K.CRI 80/90
INCL. MOUNTING KIT 24

AVAILABLE COLOR:
WHI
BLK
GRY

IP44/ROHS/CE/

KIT 24 H110



CEILING
RECESSED



BL-OBASI RD HIDE LED 1x13.8W

MATERIAL:ALU DIE-CAST
ADJUSTABLE ANGLE:0~90°/355°

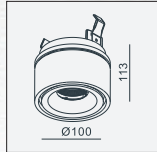
LAMP: V10 ARRAY 1x13.8W/500mA
1354lm/CRI80/3000K, 1074lm/CRI90/3000K,
890lm/CRI97/3000K
EXCL.LED POWER SUPPLY 500mA-DC

REFLECTOR ANGLE:22°, 32°, 45°.CRI 80/90
INCL. MOUNTING KIT 12

AVAILABLE COLOR:
BLK
WHI
WHI/BLK
SLV GRY/BLK

IP20/ROHS/CE/

KIT 15 xH60



BL-OBASI RD LED 1x13.8W

MATERIAL:ALU DIE-CAST
ADJUSTABLE ANGLE:0~90°/355°

LAMP: V10 ARRAY 1x13.8W/500mA
1354lm/CRI80/3000K, 1074lm/CRI90/3000K,
890lm/CRI97/3000K
EXCL.LED POWER SUPPLY 500mA-DC

REFLECTOR ANGLE:22°, 32°, 45°.CRI 80/90

AVAILABLE COLOR:
BLK
WHI
WHI/BLK
SLV GRY/BLK

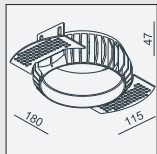
IP20/ROHS/CE/

Ø89xH40



MOUNTING KIT 15

MATERIAL:ALUMINUM



Ø121

CEILING
RECESSED



BL-OBASON -6W LED 1x6.2W

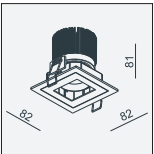
MATERIAL:ALU DIE-CAST + ALU
ADJUSTABLE ANGLE:18°

LAMP:V8 ARRAY 1x6.2W/350mA
703lm/CRI80/3000K, 550lm/CRI90/3000K,
EXCL.LED POWER SUPPLY 350mA-DC
REFLECTOR ANGLE:23°, 34°, 50°.
CRI 80/90.

AVAILABLE COLOR:
GLD/BLK
BLK
WHI/BLK
SLV GRY/BLK

IP20/ROHS/CE/

Ø76xH98



BL-OBASON -9W LED 1x9.2W

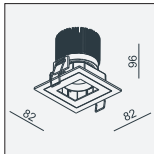
MATERIAL:ALU DIE-CAST + ALU
ADJUSTABLE ANGLE:18°

LAMP:V8 ARRAY 1x9.2W/500mA
945lm/CRI80/3000K, 739lm/CRI90/3000K,
EXCL.LED POWER SUPPLY 500mA-DC
REFLECTOR ANGLE:23°, 34°, 50°.
CRI 80/90

AVAILABLE COLOR:
GLD/BLK
BLK
WHI/BLK
SLV GRY/BLK

IP20/ROHS/CE/

Ø76xH118



BL-OBASON-MR16 1x50W

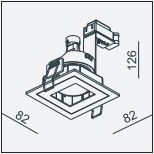
MATERIAL:ALU DIE-CAST
ADJUSTABLE ANGLE:0~18°

LAMP:1xMR16 MAX.50W
GU5.3/12V EXCL.TRANSFO

AVAILABLE COLOR:
WHI
BLK
WHI/BLK
SLV GRY/BLK
WHI+BLK/BLK

IP20/ROHS/CE/

Ø76xH135



BL-OBASON-GU10 1x50W

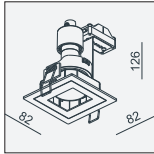
MATERIAL:ALU DIE-CAST
ADJUSTABLE ANGLE:0~18°

LAMP:1xGU10 MAX.50W
GU10 230-240V/50-60Hz

AVAILABLE COLOR:
WHI
BLK
WHI/BLK
SLV GRY/BLK
WHI+BLK/BLK

IP20/ROHS/CE/

Ø76xH135



BL-MERC-6W LED 1x6.2W

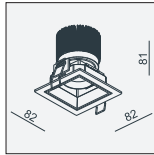
MATERIAL:ALU DIE-CAST + ALU
ADJUSTABLE ANGLE:0~18°

LAMP:V8 ARRAY 1x6.2W/350mA
703lm/CRI80/3000K, 550lm/CRI90/3000K,
EXCL.LED POWER SUPPLY 350mA-DC
REFLECTOR ANGLE:23°, 34°, 50°.
CRI 80/90.

AVAILABLE COLOR:
WHI
BLK
WHI/BLK
SLV GRY/BLK
WHI+BLK/BLK

IP20/ROHS/CE/

Ø76xH98



BL-MERC-9W LED 1x9.2W

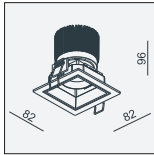
MATERIAL:ALU DIE-CAST + ALU
ADJUSTABLE ANGLE:0~18°

LAMP:V8 ARRAY 1x9.2W/500mA
945lm/CRI80/3000K, 739lm/CRI90/3000K,
EXCL.LED POWER SUPPLY 500mA-DC
REFLECTOR ANGLE:23°, 34°, 50°.
CRI 80/90

AVAILABLE COLOR:
WHI
BLK
WHI/BLK
SLV GRY/BLK
WHI+BLK/BLK

IP20/ROHS/CE/

Ø76xH118



BL-MERC-MR16 LED 1x50W

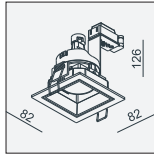
MATERIAL:ALU DIE-CAST
ADJUSTABLE ANGLE:0~18°

LAMP:1xMR16 MAX.50W
GU5.3/12V EXCL.TRANSFO

AVAILABLE COLOR:
WHI
BLK
WHI/BLK
SLV GRY/BLK
WHI+BLK/BLK

IP20/ROHS/CE/

Ø76xH135



BL-MERC-GU10 LED 1x50W

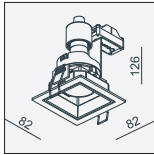
MATERIAL:ALU DIE-CAST
ADJUSTABLE ANGLE:0~18°

LAMP:1xGU10 MAX.50W
GU10 230-240V/50-60Hz

AVAILABLE COLOR:
WHI
BLK
WHI/BLK
SLV GRY/BLK
WHI+BLK/BLK

IP20/ROHS/CE/

Ø76xH135





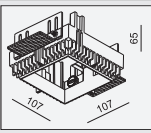
BL-OCEAN



MOUNTING KIT 1

MATERIAL:ALU DIE-CAST

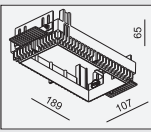
110x110 H140



MOUNTING KIT 2

MATERIAL:ALU DIE-CAST

191x110 H140



BL-OCEAN-9W LED 1x9.2W

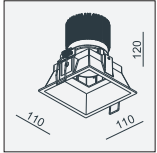
MATERIAL:ALU DIE-CAST + ALU
ADJUSTABLE ANGLE:18°

LAMP:V8 ARRAY 1x9.2W/500mA, 945lm/CRI80/3000K, 739lm/CRI90/3000K, EXCL.LED POWER SUPPLY 500mA-DC REFLECTOR ANGLE:23°, 34°, 50°, CRI 80/90.

AVAILABLE COLOR:
WHI
BLK
WHI/BLK
SLV GRY/BLK
WHI+BLK/BLK

IP20/ROHS/CE/

86x86 H136



BL-OCEAN HIDE-9W LED 1x9.2W

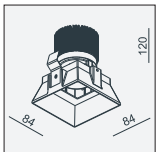
MATERIAL:ALU DIE-CAST + ALU
ADJUSTABLE ANGLE:18°

LAMP:V8 ARRAY 1x9.2W/500mA, 945lm/CRI80/3000K, 739lm/CRI90/3000K, EXCL.LED POWER SUPPLY 500mA-DC REFLECTOR ANGLE:23°, 34°, 50°, CRI 80/90.
INCL. MOUNTING KIT 1

AVAILABLE COLOR:
WHI
BLK
WHI/BLK
SLV GRY/BLK
WHI+BLK/BLK

IP20/ROHS/CE/

KIT 1 H136



BL-OCEAN-MR16 LED 1x50W

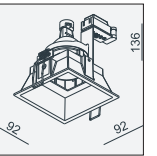
MATERIAL:ALU DIE-CAST
ADJUSTABLE ANGLE:0~18°

LAMP:1xMR16 MAX.50W GU5.3/12V EXCL.TRANSFO

AVAILABLE COLOR:
WHI
BLK
WHI/BLK
SLV GRY/BLK
WHI+BLK/BLK

IP20/ROHS/CE/

86x86 H145



BL-OCEAN-GU10 LED 1x50W

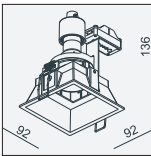
MATERIAL:ALU DIE-CAST
ADJUSTABLE ANGLE:0~18°

LAMP:1xGU10 MAX.50W GU10 230-240V/50-60Hz

AVAILABLE COLOR:
WHI
BLK
WHI/BLK
SLV GRY/BLK
WHI+BLK/BLK

IP20/ROHS/CE/

86x86 H145



BL-OCEAN HIDE-MR16 LED 1x50W

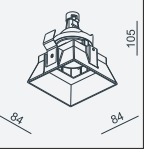
MATERIAL:ALU DIE-CAST
ADJUSTABLE ANGLE:0~18°

LAMP:1xMR16 MAX.50W GU5.3/12V EXCL.TRANSFO
INCL. MOUNTING KIT 1

AVAILABLE COLOR:
WHI
BLK
WHI/BLK
SLV GRY/BLK
WHI+BLK/BLK

IP20/ROHS/CE/

KIT 1 H125



BL-OCEAN HIDE-GU10 LED 1x50W

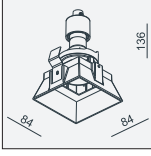
MATERIAL:ALU DIE-CAST
ADJUSTABLE ANGLE:0~18°

LAMP:1xGU10 MAX.50W GU10 230-240V/50-60Hz
INCL. MOUNTING KIT 1

AVAILABLE COLOR:
WHI
BLK
WHI/BLK
SLV GRY/BLK
WHI+BLK/BLK

IP20/ROHS/CE/

KIT 1 H145





BL-OCEAN 2-9W LED 2x9.2W

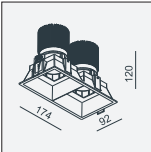
MATERIAL:ALU DIE-CAST + ALU
ADJUSTABLE ANGLE:18°

LAMP:V8 ARRAY 1x9.2W/500mA,
2x945lm/CRI80/3000K, 2x739lm/CRI90/3000K,
EXCL.LED POWER SUPPLY 500mA-DC
REFLECTOR ANGLE:23°, 34°, 50°.
CRI 80/90.

AVAILABLE COLOR:
WHI
BLK
WHI/BLK
SLV GRY/BLK
WHI+BLK/BLK

IP20/ROHS/CE/

168x86 H136



BL-OCEAN 2 HIDE-9W LED 2x9.2W

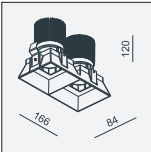
MATERIAL:ALU DIE-CAST + ALU
ADJUSTABLE ANGLE:18°

LAMP:V8 ARRAY 2x9.2W/500mA,
2x945lm/CRI80/3000K, 2x739lm/CRI90/3000K,
EXCL.LED POWER SUPPLY 500mA-DC
REFLECTOR ANGLE:23°, 34°, 50°.
CRI 80/90.
INCL. MOUNTING KIT 2

AVAILABLE COLOR:
WHI
BLK
WHI/BLK
SLV GRY/BLK
WHI+BLK/BLK

IP20/ROHS/CE/

KIT2 H136



BL-OCEAN -MR16 LED 2x50W

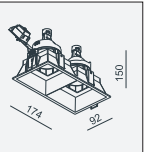
MATERIAL:ALU DIE-CAST
ADJUSTABLE ANGLE:0~18°

LAMP:2xMR16 MAX.50W
GU5.3/12V EXCL.TRANSFO

AVAILABLE COLOR:
WHI
BLK
WHI/BLK
SLV GRY/BLK
WHI+BLK/BLK

IP20/ROHS/CE/

168x86 H160



BL-OCEAN -GU10 LED 2x50W

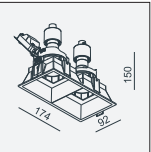
MATERIAL:ALU DIE-CAST
ADJUSTABLE ANGLE:0~18°

LAMP:2xGU10 MAX.50W
GU10 230~240V/50~60Hz

AVAILABLE COLOR:
WHI
BLK
WHI/BLK
SLV GRY/BLK
WHI+BLK/BLK

IP20/ROHS/CE/

168x86 H160



BRIDGELUX®
LED CHIPS

BL-OCEAN HIDE -MR16 LED 1x50W

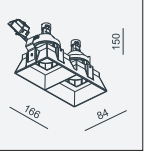
MATERIAL:ALU DIE-CAST
ADJUSTABLE ANGLE:0~18°

LAMP:1xMR16 MAX.50W
GU5.3/12V EXCL.TRANSFO
INCL. MOUNTING KIT 2

AVAILABLE COLOR:
WHI
BLK
WHI/BLK
SLV GRY/BLK
WHI+BLK/BLK

IP20/ROHS/CE/

KIT 2 H125



BL-OCEAN HIDE-GU10 LED 1x50W

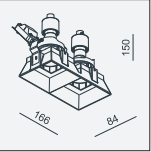
MATERIAL:ALU DIE-CAST
ADJUSTABLE ANGLE:0~18°

LAMP:1xGU10 MAX.50W
GU10 230~240V/50~60Hz
INCL. MOUNTING KIT 2

AVAILABLE COLOR:
WHI
BLK
WHI/BLK
SLV GRY/BLK
WHI+BLK/BLK

IP20/ROHS/CE/

KIT 2 H145



BL-OCTAVIAN -9W LED 1x9.2W

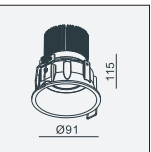
MATERIAL:ALU DIE-CAST + ALU
ADJUSTABLE ANGLE:18°

LAMP:V8 ARRAY 1x9.2W/500mA,
945lm/CRI80/3000K, 739lm/CRI90/3000K,
EXCL.LED POWER SUPPLY 500mA-DC
REFLECTOR ANGLE:23°, 34°, 50°.
CRI 80/90.

AVAILABLE COLOR:
WHI
BLK
WHI/BLK
SLV GRY/BLK
WHI+BLK/BLK

IP20/ROHS/CE/

Ø83xH130



BL-OCTAVIAN HIDE -9W LED 1x9.2W

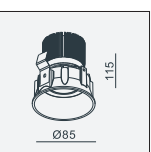
MATERIAL:ALU DIE-CAST + ALU
ADJUSTABLE ANGLE:18°

LAMP:V8 ARRAY 1x9.2W/500mA,
945lm/CRI80/3000K, 739lm/CRI90/3000K,
EXCL.LED POWER SUPPLY 500mA-DC
REFLECTOR ANGLE:23°, 34°, 50°.
CRI 80/90.
INCL. MOUNTING KIT 5

AVAILABLE COLOR:
WHI
BLK
WHI/BLK
SLV GRY/BLK
WHI+BLK/BLK

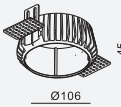
IP20/ROHS/CE/

KIT 5 H130



MOUNTING KIT 5
MATERIAL:ALUMINUM

Ø114 H150



BL-OCTAVIAN -MR16 LED 1x50W

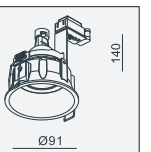
MATERIAL:ALU DIE-CAST
ADJUSTABLE ANGLE:0~18°/355°

LAMP:1xMR16 MAX.50W
GU5.3/12V EXCL.TRANSFO

AVAILABLE COLOR:
WHI
BLK
SLV GRY
WHI/GLD
SLV/GLD

IP20/ROHS/CE/

Ø83xH160



BL-OCTAVIAN -GU10 LED 1x50W

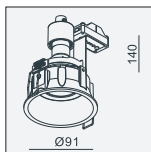
MATERIAL:ALU DIE-CAST
ADJUSTABLE ANGLE:0~18°/355°

LAMP:1xGU10 MAX.50W
GU10 230~240V/50~60Hz

AVAILABLE COLOR:
WHI
BLK
SLV GRY
WHI/GLD
SLV/GLD

IP20/ROHS/CE/

Ø83xH160



BL-OCTAVIAN HIDE-MR16 LED 1x50W

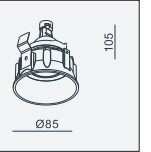
MATERIAL:ALU DIE-CAST
ADJUSTABLE ANGLE:0~18°/355°

LAMP:1xMR16 MAX.50W
GU5.3/12V EXCL.TRANSFO
INCL. MOUNTING KIT 5

AVAILABLE COLOR:
WHI
BLK
SLV GRY
WHI/GLD
SLV/GLD

IP20/ROHS/CE/

KITxH130



BL-OCTAVIAN HIDE-GU10 LED 1x50W

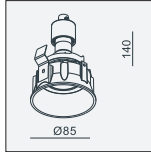
MATERIAL:ALU DIE-CAST
ADJUSTABLE ANGLE:0~18°/355°

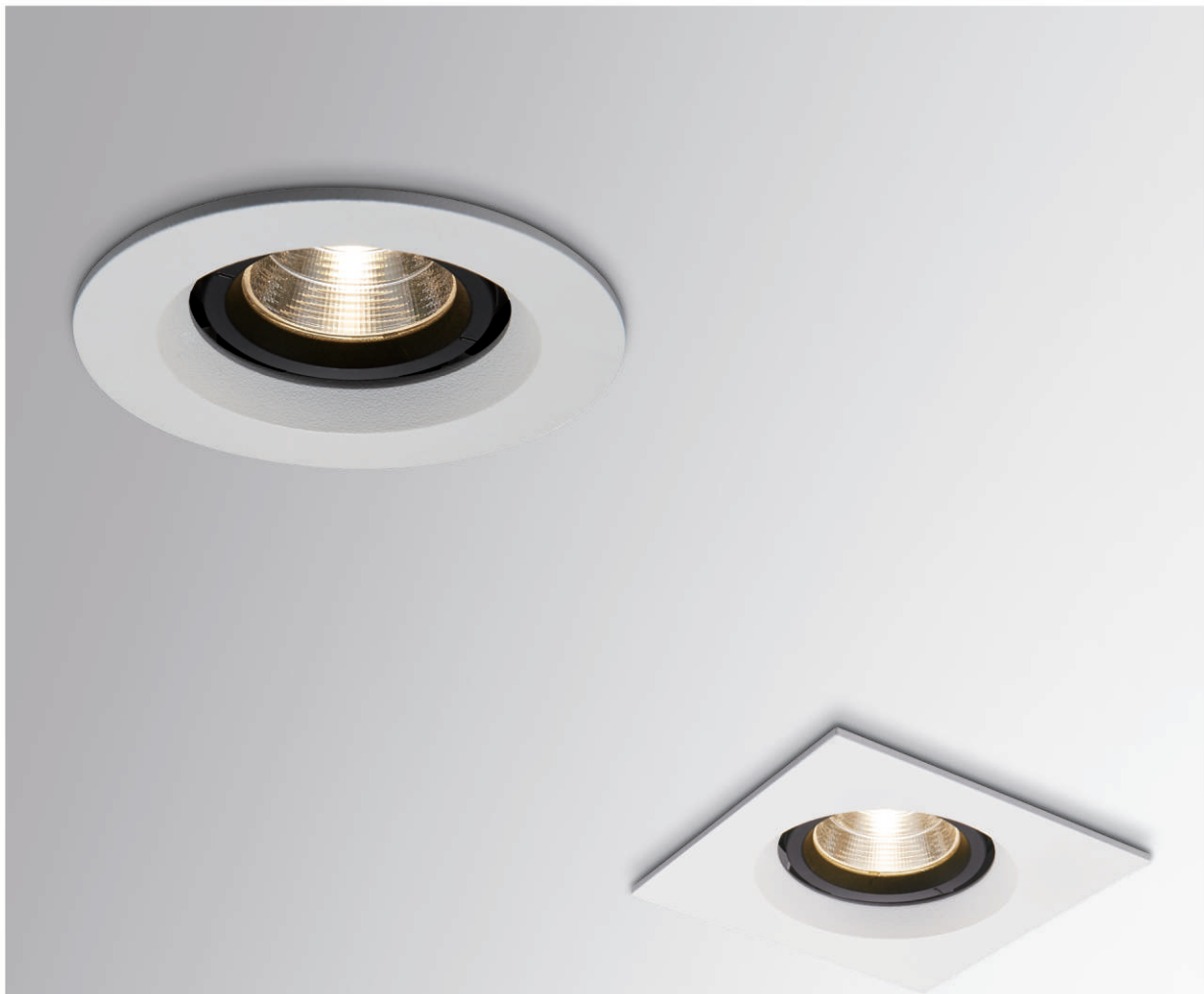
LAMP:1xGU10 MAX.50W
GU10 230~240V/50~60Hz
INCL. MOUNTING KIT 5

AVAILABLE COLOR:
WHI
BLK
SLV GRY
WHI/GLD
SLV/GLD

IP20/ROHS/CE/

KITxH160





BL-OASIS

Minimalist appearance and exact production cost controlling which makes ALLEN series can be good at promotion.

New designed $\phi 35$ reflector, provides a 89% high efficiency output, the light is clean and uniform without any spots. What's more there are three beam angles for options!

Using Bridgelux COB which has strict managements on its color binning. It is guaranteed that color binning within 2sdcn in continuous supply.



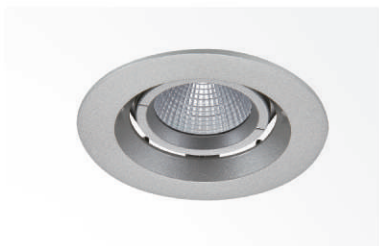
WHI/BLK



WHI



BLK



SLV GRY



SLV GRY/BLK

BL-OASIS LED 1x6.2W



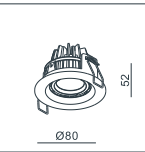
MATERIAL:ALU DIE-CAST
ADJUSTABLE ANGLE:0~22°/360°

LAMP: BRIDGELUX V8 Array 1×6.2W
350mA 3000K, 703lm/CRI 80
550lm/CRI 90;
EXCL.LED POWER SUPPLY 350mA-DC
REFLECTOR ANGLE:23°, 34°, 50°. CRI 80/90.

AVAILABLE COLOR:
Sand Black,
Sand White
Sand White/Sand Black
Slv Gry
Silver Grey/Sand Black

IP20/ROHS/CE/▽

Ø68 H67



BL-OASIS 1 LED 1x6.2W



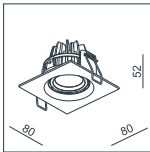
MATERIAL:ALU DIE-CAST
ADJUSTABLE ANGLE:0~22°/360°

LAMP: BRIDGELUX V8 Array 1×6.2W
350mA 3000K, 703lm/CRI 80
550lm/CRI 90;
EXCL.LED POWER SUPPLY 350mA-DC
REFLECTOR ANGLE:23°, 34°, 50°. CRI 80/90.

AVAILABLE COLOR:
Sand Black,
Sand White
Sand White/Sand Black
Slv Gry
Silver Grey/Sand Black

IP20/ROHS/CE/▽

Ø68 H67



BL-OASIS-V6 LED 1x4.6~6.8W



MATERIAL:ALU DIE-CAST
ADJUSTABLE ANGLE:0~22°/360°

LAMP: BRIDGELUX V6 Array 1×4.6~6.8W
500~700mA 3000K, 471~609lm/CRI 80
395~512lm/CRI 90;
EXCL.LED POWER SUPPLY 500~700mA-DC
REFLECTOR ANGLE:18°, 30°, 48°. CRI 80/90.

AVAILABLE COLOR:
Sand Black,
Sand White
Sand White/Sand Black
Slv Gry
Silver Grey/Sand Black

IP20/ROHS/CE/▽

Ø68 H67



BL-OASIS 1-V6 LED 1x4.6~6.8W



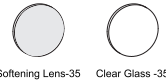
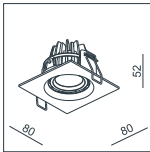
MATERIAL:ALU DIE-CAST
ADJUSTABLE ANGLE:0~22°/360°

LAMP: BRIDGELUX V6 Array 1×4.6~6.8W
500~700mA 3000K, 471~609lm/CRI 80
395~512lm/CRI 90;
EXCL.LED POWER SUPPLY 500~700mA-DC
REFLECTOR ANGLE:18°, 30°, 48°. CRI 80/90.

AVAILABLE COLOR:
Sand Black,
Sand White
Sand White/Sand Black
Slv Gry
Silver Grey/Sand Black

IP20/ROHS/CE/▽

Ø68 H67





BL-QADIR LED 2x4.6W

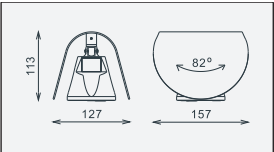


MATERIAL:ALU DIE-CAST + ALU

LAMP:V6 ARRAY 2x4.6W/500mA,
2x471lm/CRI80/3000K,2x399lm/CRI90/3000K,
INCL. LED POWER SUPPLY 500mA-DC
AC 100-240V/50-60Hz

AVAILABLE COLOR:
Sand White
Sand Black
Sand Grey
Champagne

IP43/ROHS/CE/



BL-QADIR OUT LED 2x4.6W

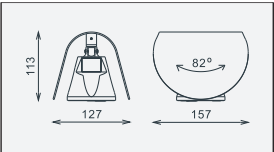


MATERIAL:ALU DIE-CAST + ALU

LAMP:V6 ARRAY 2x4.6W/500mA,
2x471lm/CRI80/3000K,2x399lm/CRI90/3000K,
INCL. LED POWER SUPPLY 500mA-DC
AC 100-240V/50-60Hz

AVAILABLE COLOR:
Sand White
Sand Black
Sand Grey
Champagne

IP54/ROHS/CE/



BL-QADIR DIM LED 2x4.6W

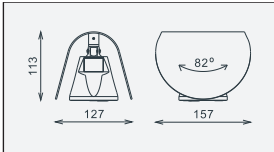


MATERIAL:ALU DIE-CAST + ALU

LAMP:V6 ARRAY 2x4.6W/500mA,
2x471lm/CRI80/3000K,2x399lm/CRI90/3000K,
INCL. LED POWER SUPPLY 500mA-DC
TRIAC DIM
AC 100-240V/50-60Hz

AVAILABLE COLOR:
Sand White
Sand Black
Sand Grey
Champagne

IP43/ROHS/CE/



BL-QADIR OUT DIM LED 2x4.6W

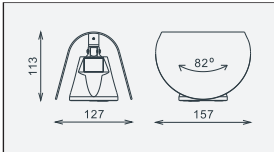


MATERIAL:ALU DIE-CAST + ALU

LAMP:V6 ARRAY 2x4.6W/500mA,
2x471lm/CRI80/3000K,2x399lm/CRI90/3000K,
INCL. LED POWER SUPPLY 500mA-DC
TRIAC DIM
AC 100-240V/50-60Hz

AVAILABLE COLOR:
Sand White
Sand Black
Sand Grey
Champagne

IP54/ROHS/CE/



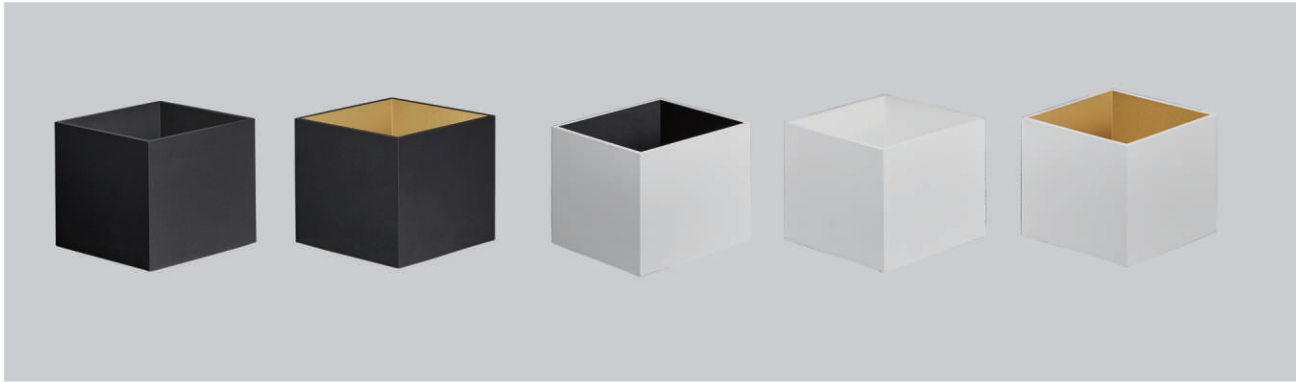


BL-QAMAR

This is a wall light luminaire with bright character, it can be single use on the wall, as well as use several pieces to make geometric patterns! But no matter what, CUBE is super attractive!

This offers a variety of color matching, white, black, champagne, white/gold, black/gold.

This series has 9W-12W different outputs, TRIAC dimming or non-dimmable different versions for customers' options.



BL-QAMAR LED 2x6.2W

MATERIAL:ALU DIE-CAST + ALU

LAMP:V8 ARRAY 2x6.2W/350mA,
2x703lm/CRI80/3000K,2x550lm/CRI90/3000K,
INCL. LED POWER SUPPLY 350mA-DC
AC 100-240V/50-60Hz. ⊕

AVAILABLE COLOR:
Sand White
Sand White/Gold
Sand Black
Sand Black/Gold
Champagne

IP40/ROHS/CE/▽

BL-QAMAR DIM LED 2x6.2W

MATERIAL:ALU DIE-CAST + ALU

LAMP:V8 ARRAY 2x6.2W/350mA,
2x703lm/CRI80/3000K,2x550lm/CRI90/3000K,
INCL. LED POWER SUPPLY 350mA-DC
TRIAC DIM
AC 100-240V/50-60Hz. ⊕

AVAILABLE COLOR:
Sand White
Sand White/Gold
Sand Black
Sand Black/Gold
Champagne

IP40/ROHS/CE/▽

BL-QAMAR -9W LED 2x4.6W

MATERIAL:ALU DIE-CAST + ALU

LAMP:V6 ARRAY 2x4.6W/500mA,
2x471lm/CRI80/3000K,2x399lm/CRI90/3000K,
INCL. LED POWER SUPPLY 500mA-DC
AC 100-240V/50-60Hz. ⊕

AVAILABLE COLOR:
Sand White
Sand White/Gold
Sand Black
Sand Black/Gold
Champagne

IP40/ROHS/CE/▽

BL-QAMAR DIM -9W LED 2x4.6W

MATERIAL:ALU DIE-CAST + ALU

LAMP:V6 ARRAY 2x4.6W/500mA,
2x471lm/CRI80/3000K,2x399lm/CRI90/3000K,
INCL. LED POWER SUPPLY 500mA-DC
TRIAC DIM
AC 100-240V/50-60Hz. ⊕

AVAILABLE COLOR:
Sand White
Sand White/Gold
Sand Black
Sand Black/Gold
Champagne

IP40/ROHS/CE/▽



BL-QI is born as a brother product from BL-QAMAR,it is geometrical which consists of a multi-cutting faces,like a diamond.makes everybody impressed.

BL-QI

LED 1x6.2

MATERIAL:ALUMINUM

LAMP:V8 ARRAY 1x6.2W/350mA, 703lm/CRI80/3000K,550lm/CRI90/3000K, INCL. LED POWER SUPPLY 350mA-DC AC 100-240V/50-60Hz.

AVAILABLE COLOR:
Sand White
Sand White/Gold
Sand Black
Sand Black/Gold
Champagne

IP20/ROHS/CE/

BL-QI DIM

LED 1x9.2

MATERIAL:ALUMINUM

LAMP:V8 ARRAY 1x9.2W/500mA, 945lm/CRI80/3000K,739lm/CRI90/3000K, INCL. LED POWER SUPPLY 500mA-DC TRIAC DIM AC 100-240V/50-60Hz.

AVAILABLE COLOR:
Sand White
Sand White/Gold
Sand Black
Sand Black/Gold
Champagne

IP20/ROHS/CE/

BL-QIANA



This series is wall light for both indirect lighting and decorative lighting, the upper side of the fixture is the main direction of light distribution, through the reflector and linear spread glass, the light is disperses and distributes on the wall and ceiling very uniform. Moreover our designer ingeniously made a oval hole to make good use of the rest of the light, which create a unique selling point of decorative lighting for BL-QIANA!

BL-QIANA Series:
Small version : 1000lm or 1400lm of luminance for options.
Max version : 3000 lm of luminance.

There are non-dimmable or TRIAC dimming or 1-10V dimming versions for options.

BL-QIANA-V6

BL-QIANA-V6 DIM

LED 2x4.6W

MATERIAL:ALUMINUM DIE-CAST

LAMP:BRIDGELUX V6 Array 2×4.6W

AVAILABLE COLOR:
WHI
BLK
SLV GRY

IP20/ROHS/CE/

BL-QIANA

BL-QIANA DIM

LED 2x6.2W

MATERIAL:ALUMINUM DIE-CAST

LAMP:BRIDGELUX V8 Array 2×6.2W

AVAILABLE COLOR:
WHI
BLK
SLV GRY

IP20/ROHS/CE/

BL-QIANA MAX

BL-QIANA MAX DIM

BL-QIANA MAX 1~10V

LED 2x13.8W

MATERIAL:ALUMINUM DIE-CAST

LAMP:BRIDGELUX V10 Array 2×13.8W

AVAILABLE COLOR:
WHI
BLK
SLV GRY

IP20/ROHS/CE/

MODEL NO.	DIMENSION(mm) LxWxH	POWER (W)	DRIVER(BUILT-IN)	LUMINANCE(lm) 3000K/CRI80	LUMINANCE(lm) 3000K/CRI90
BL-QIANA-V6	205x95x26	9.2	NO DIM	942	790
BL-QIANA-V6 DIM	205x95x26	9.2	TRIAC DIMMING	942	790
BL-QIANA	205x95x26	12.4	NO DIM	1406	1100
BL-QIANA DIM	205x95x26	12.4	TRIAC DIMMING	1406	1100
BL-QIANA MAX	288x128x28	27.6	NO DIM	2948	2334
BL-QIANA MAX DIM	288x128x28	27.6	TRIAC DIMMING	2948	2334
BL-QIANA MAX 1~10V	288x128x28	27.6	1~10V DIMMING	2948	2334





WALL SURFACE

BL-QING is a wall light series for indirect lighting, with slender and exquisite design, it can be in the architecture environment harmoniously.

It is applied with Lumileds SMD led with high stability, and 90° professional slender reflective lens, with high performance, grant a very efficiently and comfortable lighting environment.

This series provide various sizes and outputs for options, 291mm/6W and 577mm/12W are driver built-in versions, other sizes are external driver version.

There are non-dimmable or TRIAC dimming or 1-10V dimming versions for customers' options.




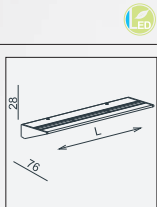
WALL SURFACE

BL-QING

MATERIAL:ALUMINUM


AVAILABLE COLOR:Sand White Sand Black Sand Grey Champagne

IP20/ROHS/CE/ 



LAMP:LUXEON 3020 LEDSTRIP 285mm/12V/6W 720lm/3000K/CRI80 600lm/3000K/CRI90
INCL. LED POWER SUPPLY 12V/6W-DC AC 100-240V/50-60Hz. 

MODEL NO.	LENGTH(mm)	POWER (W)	DRIVER(BUILT-IN)	LUMINOUS FLUX(lm) 3000K/CRI80	LUMINOUS FLUX(lm) 3000K/CRI90	WEIGHT(g)
BL-QING-6W	291	6	NO DIM	650	560	550
BL-QING DIM-12W	577	2x6	NO DIM	1300	1120	982

LAMP:LUXEON 3020 LEDSTRIP 285mm/700mA/6.5W 720lm/3000K/CRI80 600lm/3000K/CRI90
INCL. LED POWER SUPPLY 700mA-DC AC 100-240V/50-60Hz. 

MODEL NO.	LENGTH(mm)	POWER (W)	DRIVER(EXTERNAL)	LUMINOUS FLUX(lm) 3000K/CRI80	LUMINOUS FLUX(lm) 3000K/CRI90	WEIGHT(g)
BL-QING-20W	865	19.5	NO DIM	2160	1800	1457
BL-QING DIM-20W	865	19.5	TRIAC DIMMING	2160	1800	
BL-QING 1-10V-20W	865	19.5	1~10V DIM	2160	1800	
BL-QING-26W	1150	26	NO DIM	2880	2400	1927
BL-QING DIM-26W	1150	26	TRIAC DIMMING	2880	2400	
BL-QING 1-10V-26W	1150	26	1~10V DIM	2880	2400	
BL-QING-39W	1723	39	NO DIM	4320	3600	2884
BL-QING DIM-39W	1723	39	TRIAC DIMMING	4320	3600	
BL-QING 1-10V-39W	1723	39	1~10V DIM	4320	3600	
BL-QING-46W	2010	45.5	NO DIM	5040	4200	3300
BL-QING DIM-46W	2010	45.5	TRIAC DIMMING	5040	4200	
BL-QING-59W	2583	58.5	NO DIM	6480	5400	4236
BL-QING DIM-59W	2583	58.5	TRIAC DIMMING	6480	5400	
BL-QING-65W	2870	65	NO DIM	7200	6000	4700
BL-QING DIM-65W	2870	65	TRIAC DIMMING	7200	6000	



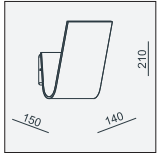
BL-QIU-6W LED 1x6.2W

MATERIAL:ALUMINUM

LAMP:V8 ARRAY 1x6.2W/350mA,
703lm/CRI80/3000K,550lm/CRI90/3000K,
INCL. LED POWER SUPPLY 350mA-DC
AC 100-240V/50-60Hz.

AVAILABLE COLOR:
Sand White
Sand Black
Sand Grey
Champagne

IP40/ROHS/CE/



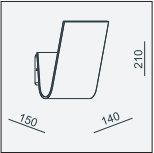
BL-QIU DIM LED 1x9.2W

MATERIAL:ALUMINUM

LAMP:V8 ARRAY 1x9.2W/500mA,
945lm/CRI80/3000K,739lm/CRI90/3000K,
INCL. LED POWER SUPPLY 500mA-DC
TRIAC DIM
AC 100-240V/50-60Hz.

AVAILABLE COLOR:
Sand White
Sand Black
Sand Grey
Champagne

IP40/ROHS/CE/



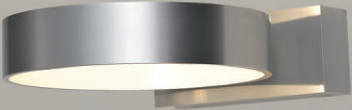
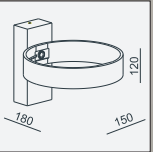
BL-QUAN LED 1x6.2W

MATERIAL:ALUMINUM

LAMP:V8 ARRAY 1x6.2W/350mA,
703lm/CRI80/3000K,550lm/CRI90/3000K,
INCL. LED POWER SUPPLY 350mA-DC
AC 100-240V/50-60Hz.

AVAILABLE COLOR:
WHI
BLK
WHI/GLD
WHI/BLK
BLK/GLD
SLV GRY

IP20/ROHS/CE/





The appearance of BL-QUEST is a standard cube, inside the fixture, there are two mechanisms on both up and down side for lighting beam angle adjustment, customers can freely adjust the angles rely on different scenes, achieve an absolutely flexibility.

This series has both indoor and outdoor versions. There are 6W-9W different outputs, and TRIAC dimming or non-dimmable versions for customers' options.

Professionally designed super-thin PC reflector, can make efficient use of the light, improved 30% lighting efficiency of the completed fixture.

BL-QUEST -6W LED 2x3.2W

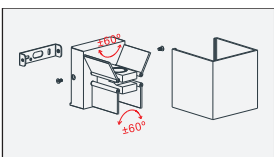
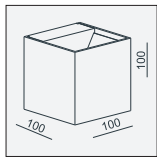


MATERIAL:ALU DIE-CAST+ ALU+GLASS

LAMP:V6 ARRAY 2x3. 2W/350mA,
2x348m/CRI80/3000K, 2x292lm/CRI90/3000K,
INCL. LED POWER SUPPLY 350mA-DC
AC 220-240V/50-60Hz.Ⓢ

AVAILABLE COLOR:Sand White Sand Black Sand Grey
Sand White/Gold Sand Black/Gold

ROHS/CE/IP43▽



BL-QUEST -9W LED 2x4.6W



MATERIAL:ALU DIE-CAST+ ALU+GLASS

LAMP:V6 ARRAY 2x4. 6W/500mA,
2x471m/CRI80/3000K, 2x399lm/CRI90/3000K,
INCL. LED POWER SUPPLY 500mA-DC
AC 220-240V/50-60Hz.Ⓢ

AVAILABLE COLOR:Sand White Sand Black Sand Grey
Sand White/Gold Sand Black/Gold

ROHS/CE/IP43▽

BL-QUEST DIM-9W LED 2x4.6W



MATERIAL:ALU DIE-CAST+ ALU+GLASS

LAMP:V6 ARRAY 2x4. 6W/500mA,
2x471m/CRI80/3000K, 2x399lm/CRI90/3000K,
INCL. LED POWER SUPPLY 500mA-DC
TRIAC DIM
AC 220-240V/50-60Hz.Ⓢ

AVAILABLE COLOR:Sand White Sand Black Sand Grey
Sand White/Gold Sand Black/Gold

ROHS/CE/IP43▽

BL-QUEST OUT-6W LED 2x3.2W

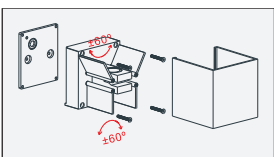
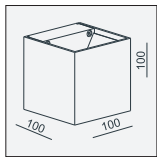


MATERIAL:ALU DIE-CAST+ ALU+GLASS

LAMP:V6 ARRAY 2x3. 2W/350mA,
2x348m/CRI80/3000K, 2x292lm/CRI90/3000K,
INCL. LED POWER SUPPLY 350mA-DC
AC 220-240V/50-60Hz.Ⓢ

AVAILABLE COLOR:Sand White Sand Black Sand Grey
Sand White/Gold Sand Black/Gold

ROHS/CE/IP54▽



BL-QUEST OUT-9W LED 2x4.6W



MATERIAL:ALU DIE-CAST+ ALU+GLASS

LAMP:V6 ARRAY 2x4. 6W/500mA,
2x471m/CRI80/3000K, 2x399lm/CRI90/3000K,
INCL. LED POWER SUPPLY 500mA-DC
AC 220-240V/50-60Hz.Ⓢ

AVAILABLE COLOR:Sand White Sand Black Sand Grey
Sand White/Gold Sand Black/Gold

ROHS/CE/IP54▽

BL-QUEST OUT DIM-9W LED 2x4.6W

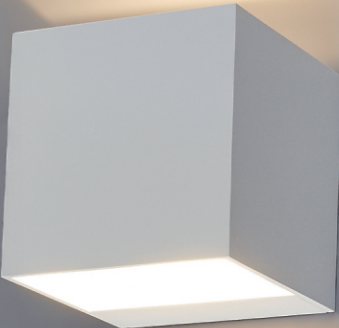


MATERIAL:ALU DIE-CAST+ ALU+GLASS

LAMP:V6 ARRAY 2x4. 6W/500mA,
2x471m/CRI80/3000K, 2x399lm/CRI90/3000K,
INCL. LED POWER SUPPLY 500mA-DC
TRIAC DIM
AC 220-240V/50-60Hz.Ⓢ

AVAILABLE COLOR:Sand White Sand Black Sand Grey
Sand White/Gold Sand Black/Gold

ROHS/CE/IP54▽



According to the professional designed 85° reflector of BL-QUEST, which is made of high reflective white PC material, it can improve the output lumen and central luminous intensity over 30%!

BL-QUEST FIX-6W LED 2x3.2W

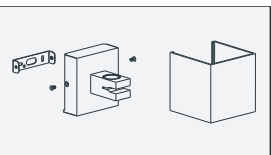
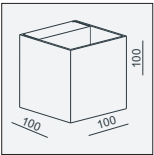


MATERIAL:ALU DIE-CAST+ ALU+GLASS

LAMP:V6 ARRAY 2x3.2W/350mA,
2x348m/CRI80/3000K,2x292lm/CRI90/3000K,
INCL. LED POWER SUPPLY 350mA-DC
AC 220-240V/50-60Hz.Ⓢ

AVAILABLE COLOR:Sand White Sand Black Sand Grey
Sand White/Gold Sand Black/Gold

ROHS/CE/IP43



BL-QUEST FIX-9W LED 2x4.6W



MATERIAL:ALU DIE-CAST+ ALU+GLASS

LAMP:V6 ARRAY 2x4.6W/500mA,
2x471m/CRI80/3000K,2x399lm/CRI90/3000K,
INCL. LED POWER SUPPLY 500mA-DC
AC 220-240V/50-60Hz.Ⓢ

AVAILABLE COLOR:Sand White Sand Black Sand Grey
Sand White/Gold Sand Black/Gold

ROHS/CE/IP43

BL-QUEST FIX DIM-9W LED 2x4.6W



MATERIAL:ALU DIE-CAST+ ALU+GLASS

LAMP:V6 ARRAY 2x4.6W/500mA,
2x471m/CRI80/3000K,2x399lm/CRI90/3000K,
INCL. LED POWER SUPPLY 500mA-DC
TRIAC DIM
AC 220-240V/50-60Hz.Ⓢ

AVAILABLE COLOR:Sand White Sand Black Sand Grey
Sand White/Gold Sand Black/Gold

ROHS/CE/IP43

BL-QUEST FIX OUT-6W LED 2x3.2W

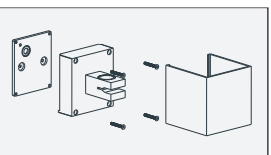
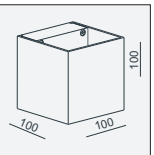


MATERIAL:ALU DIE-CAST+ ALU+GLASS

LAMP:V6 ARRAY 2x3.2W/350mA,
2x348m/CRI80/3000K,2x292lm/CRI90/3000K,
INCL. LED POWER SUPPLY 350mA-DC
AC 220-240V/50-60Hz.Ⓢ

AVAILABLE COLOR:Sand White Sand Black Sand Grey
Sand White/Gold Sand Black/Gold

ROHS/CE/IP54



BL-QUEST FIX OUT-9W LED 2x4.6W



MATERIAL:ALU DIE-CAST+ ALU+GLASS

LAMP:V6 ARRAY 2x4.6W/500mA,
2x471m/CRI80/3000K,2x399lm/CRI90/3000K,
INCL. LED POWER SUPPLY 500mA-DC
AC 220-240V/50-60Hz.Ⓢ

AVAILABLE COLOR:Sand White Sand Black Sand Grey
Sand White/Gold Sand Black/Gold

ROHS/CE/IP54

BL-QUEST FIX OUT DIM-9W LED 2x4.6W



MATERIAL:ALU DIE-CAST+ ALU+GLASS

LAMP:V6 ARRAY 2x4.6W/500mA,
2x471m/CRI80/3000K,2x399lm/CRI90/3000K,
INCL. LED POWER SUPPLY 500mA-DC
TRIAC DIM
AC 220-240V/50-60Hz.Ⓢ

AVAILABLE COLOR:Sand White Sand Black Sand Grey
Sand White/Gold Sand Black/Gold

ROHS/CE/IP54

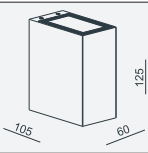


BL-QUEEN is a series of up and down lighting wall light. Provides narrow or wide optic beam distribution and can be combined with one another. Especially its 4° lens, with its outstanding performance it can be as a long distance decorative lighting in outdoor environments. Thanks to its fashion design and compact dimension, this luminaire can be integrated into modern or historical architecture. It produces an interesting lighting effect just consuming very little energy.

By combining narrow beam and wide beam optics, it can create an attractive lighting effect on the facade, meanwhile providing uniform illumination on the ground.

This series is IP65 high protection product, which can be applied to various outdoor occasions.

There are up/down two lights version or single light version for options.



BL-QUEEN WIDE

LED 3x2.2W+3x2.2W

MATERIAL:ALU DIE-CAST+GLASS

LAMP:XP-E2 3X2.2W+3x2.2W 700mA;
INCL. LED POWER SUPPLY 700mA-DC
AC 100-240V/50-60Hz
LENS ANGLE:60°+60°.

AVAILABLE COLOR:
Sand White
Sand Black
Sand Grey

IP65/ROHS/CE/



BL-QUEEN NARROW

LED 1x2.2W+1x2.2W

MATERIAL:ALU DIE-CAST+GLASS

LAMP:XP-E2 1X2.2W+1x2.2W 700mA;
INCL. LED POWER SUPPLY 700mA-DC
AC 100-240V/50-60Hz
LENS ANGLE:4°+4°.

AVAILABLE COLOR:
Sand White
Sand Black
Sand Grey

IP65/ROHS/CE/



BL-QUEEN NARROW/WIDE

LED 1x2.2W+3x2.2W

MATERIAL:ALU DIE-CAST+GLASS

LAMP:XP-E2 1X2.2W+3x2.2W 700mA;
INCL. LED POWER SUPPLY 700mA-DC
AC 100-240V/50-60Hz
LENS ANGLE:4°+60°.

AVAILABLE COLOR:
Sand White
Sand Black
Sand Grey

IP65/ROHS/CE/



BL-QUEEN SINGLE WIDE

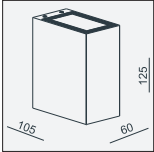
LED 1x2.2W

MATERIAL:ALU DIE-CAST+GLASS

LAMP:XP-E2 1X2.2W 700mA;
INCL. LED POWER SUPPLY 700mA-DC
AC 100-240V/50-60Hz
LENS ANGLE:4°.

AVAILABLE COLOR:
Sand White
Sand Black
Sand Grey

IP65/ROHS/CE/



BL-QUEEN SINGLE NARROW

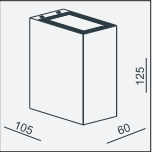
LED 3x2.2W

MATERIAL:ALU DIE-CAST+GLASS

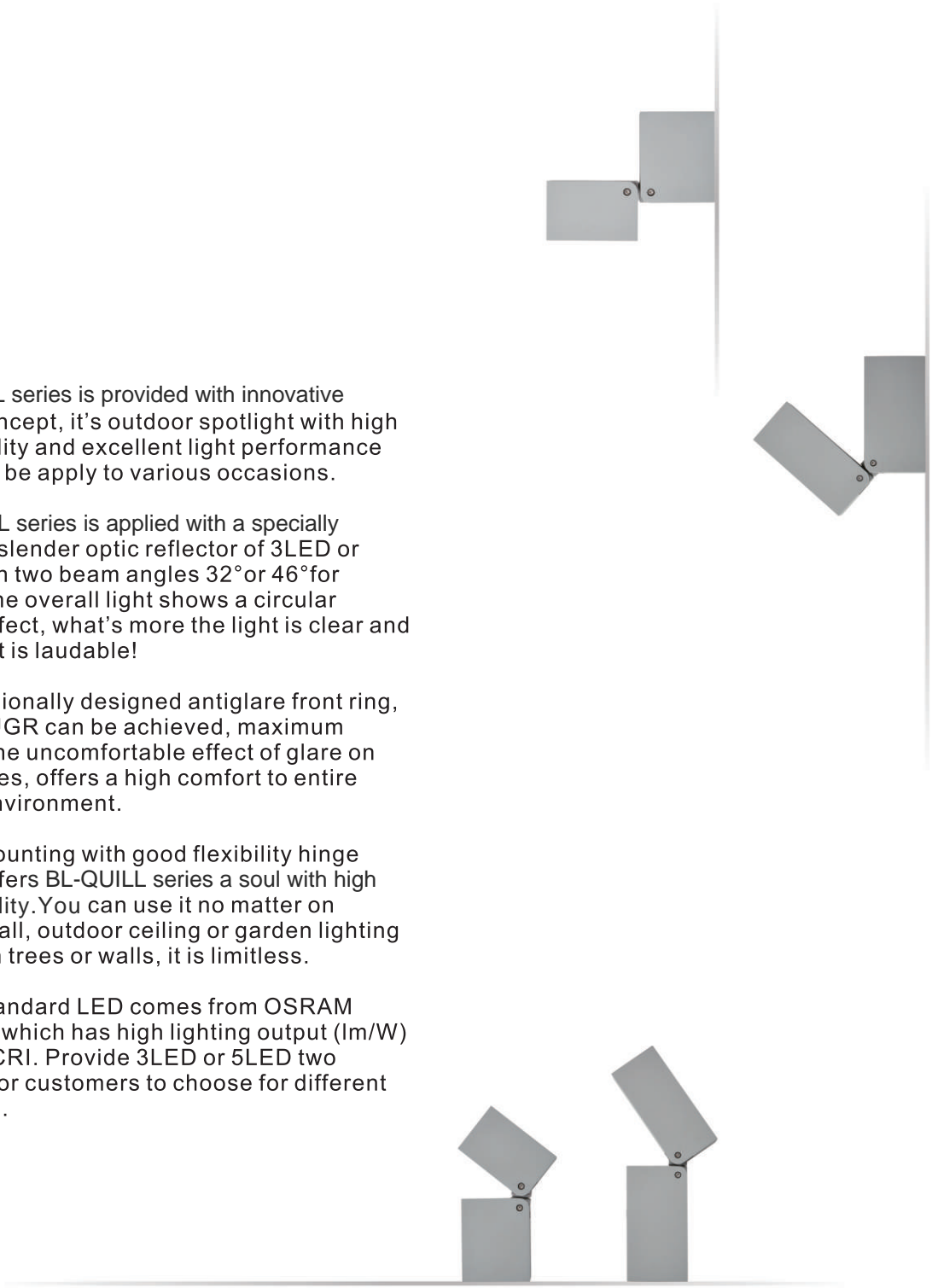
LAMP:XP-E2 3X2.2W 700mA;
INCL. LED POWER SUPPLY 700mA-DC
AC 100-240V/50-60Hz
LENS ANGLE:4°.

AVAILABLE COLOR:
Sand White
Sand Black
Sand Grey

IP65/ROHS/CE/



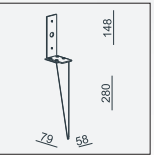
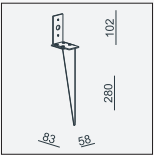
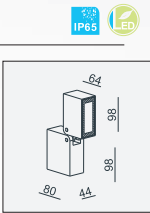
- 1.BL-QUILL series is provided with innovative design concept, it's outdoor spotlight with high expansibility and excellent light performance which can be apply to various occasions.
- 2.BL-QUILL series is applied with a specially designed slender optic reflector of 3LED or 5LED, with two beam angles 32°or 46°for options, the overall light shows a circular lighting effect, what's more the light is clear and uniform , it is laudable!
- 3. Professionally designed antiglare front ring, very low UGR can be achieved, maximum reduced the uncomfortable effect of glare on human eyes, offers a high comfort to entire lighting environment.
- 4. Hide mounting with good flexibility hinge design, offers BL-QUILL series a soul with high expansibility.You can use it no matter on outdoor wall, outdoor ceiling or garden lighting shining on trees or walls, it is limitless.
- 5. High standard LED comes from OSRAM company, which has high lighting output (lm/W) and high CRI. Provide 3LED or 5LED two versions for customers to choose for different occasions.



BL-QUILL 3 LED 3x2W

MATERIAL:ALU DIE-CAST+ ALU+GLASS
ADJUSTABLE ANGLE:0~180°/355°
OSLON Square EC 3x2W/700mA,
672lm/CRI80,522lm/CRI90,
INCL. LED POWER SUPPLY 700mA-DC
AC 100-240V/50-60Hz
REFLECTOR ANGLE:32°、46°.CRI 80/90.

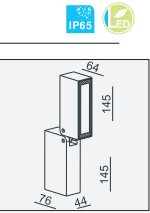
AVAILABLE COLOR:
WHI
BLK
GRY
IP65/ROHS/CE/



BL-QUILL 5 LED 5x2W

MATERIAL:ALU DIE-CAST+ ALU+GLASS
ADJUSTABLE ANGLE:0~180°/355°
LAMP:OSLON Square EC 5x2W/700mA,
1120lm/CRI80,870lm/CRI90,
INCL. LED POWER SUPPLY 700mA-DC
AC 100-240V/50-60Hz
REFLECTOR ANGLE:32°、46°.CRI 80/90.

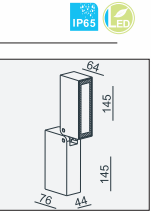
AVAILABLE COLOR:
WHI
BLK
GRY
IP65/ROHS/CE/



BL-QUILL 5 DIM LED 5x2W

MATERIAL:ALU DIE-CAST+ ALU+GLASS
ADJUSTABLE ANGLE:0~180°/355°
LAMP:OSLON Square EC 5x2W/700mA,
1120lm/CRI80,870lm/CRI90,
INCL. LED POWER SUPPLY 700mA-DC TRIAC DIM
AC 100-240V/50-60Hz
REFLECTOR ANGLE:32°、46°.CRI 80/90.

AVAILABLE COLOR:
WHI
BLK
GRY
IP65/ROHS/CE/





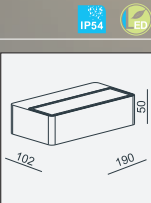
BL-QUY SINGLE-10W

MATERIAL:ALU DIE-CAST+GLASS

LAMP:LUXEON 3020 24X0.39W/500mA,
INCL. LED POWER SUPPLY 500mA-DC
AC 100-240V/50-60Hz. ☺

AVAILABLE COLOR:
WHI
BLK
GRY

IP54/ROHS/CE/ ▽



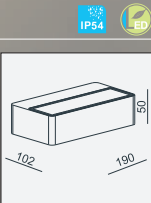
BL-QUY-10W

MATERIAL:ALU DIE-CAST+GLASS

LAMP:LUXEON 3020 24X0.39W/500mA,
INCL. LED POWER SUPPLY 500mA-DC
AC 100-240V/50-60Hz. ☺

AVAILABLE COLOR:
WHI
BLK
GRY

IP54/ROHS/CE/ ▽



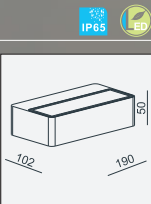
BL-QUY SINGLE-16W

MATERIAL:ALU DIE-CAST+GLASS

LAMP:LUXEON 3020 35X0.45W/700mA,
INCL. LED POWER SUPPLY 700mA-DC
AC 100-240V/50-60Hz. ☺

AVAILABLE COLOR:
WHI
BLK
GRY

IP65/ROHS/CE/ ▽



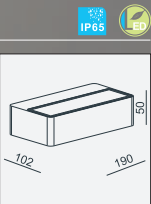
BL-QUY-16W

MATERIAL:ALU DIE-CAST+GLASS

LAMP:LUXEON 3020 35X0.45W/700mA,
INCL. LED POWER SUPPLY 700mA-DC
AC 100-240V/50-60Hz. ☺

AVAILABLE COLOR:
WHI
BLK
GRY

IP65/ROHS/CE/ ▽



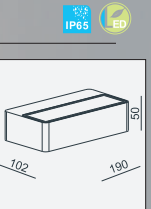
BL-QUYEN

MATERIAL:ALU DIE-CAST+GLASS

LAMP:OSLON Square EC 5x2W/700mA,
1120lm/CRI80,870lm/CRI90,
INCL. LED POWER SUPPLY 700mA-DC
AC 100-240V/50-60Hz. ☺
REFLECTOR ANGLE:32°, 46°,CRI 80/90.

AVAILABLE COLOR:
WHI
BLK
GRY

IP65/ROHS/CE/ ▽





BL-QUSAY

It is applied with one Lumileds LUXEON MZ led, meanwhile matching with a special and professional reflector. With an excellent performance of this reflector, it can diffuse a single led to have two directions of light! One side is a 5.5° narrow light beam, specially use for long distance lighting application, the other side is a wide light beam, provides a decorative illumination on the nearby facade. Furthermore, this product includes 3 styles of cover accessory, customers can simply assemble these accessories to have four different lighting effects, create variant decorative illuminations for outdoor environments.

BL-QUSAY LED 1x8W



MATERIAL:ALU DIE-CAST+GLASS

LAMP:LUXEON MZ 1x7.8W
INCL LED POWER SUPPLY 700mA-DC
AC 100-240V/50-60Hz.Ⓢ
REFLECTOR ANGLE:5.5° /Asymmetric
CRI 80.

AVAILABLE COLOR:

WHI
BLK
GRY

IP65/ROHS/CE/

